

IDILIQ

ESTATES



R4873360

 Benahavís

REF# R4873360 330.000 €

BEDS

3

BATHS

3

BUILT

178 m²

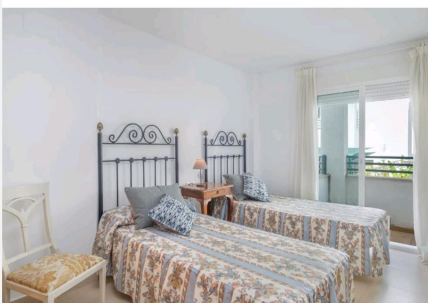
TERRACE

42 m²

DREAM TOWNHOUSE WITH VIEWS, POOL, AND PRIVATE GARDEN Located in the exclusive area of Benahavís, this magnificent townhouse offers a unique lifestyle surrounded by nature, with all essential services just minutes away. Built on a 220m² plot and with a total built area of 178m², the property boasts breathtaking panoramic views, allowing you to enjoy stunning landscapes from every corner of the house. This home features four spacious bedrooms and three bathrooms, ideal for a family seeking comfort without compromising elegance. The private garden is perfect for relaxation and outdoor gatherings, while the communal pool and landscaped gardens provide additional spaces for leisure and enjoyment. Just 30 minutes from Marbella and a five-minute walk from a wide range of restaurants and entertainment options, this townhouse offers an unbeatable location that combines tranquility with convenient access to essential amenities. Built in 2010, the property is in excellent condition and showcases top-quality materials in every detail. With close proximity to schools, supermarkets, and recreational areas, this home is ideal for those seeking a residence in a natural setting with all the comforts of modern living.

IDILIQ

ESTATES



IDILIQ

ESTATES

