



R4869796

📍 Benalmadena

REF# R4869796 899.990 €

BEDS

4

BATHS

4

BUILT

381 m²

PLOT

500 m²

TERRACE

80 m²

Modern Townhouse situated in one of the prestigious areas of Torremuelle ideally located next to the Casablanca park just a few minutes to the train station, beach and amenities. The entrance is a wow factor with its impressive entrance and private carport adjacent to the house. Spread across three levels the ground floor greets you with a light and airy living area with high ceilings, large windows and feature fireplace and flows perfectly out to the terrace affording spectacular sea views. The owners have closed in a part of the terrace area with glass curtains creating an open plan dining room conservatory perfect for entertaining. The kitchen is partially open plan and comes complete with all high end appliances and fittings. On the first floor you will find 2 tastefully decorated double bedrooms with built in wardrobes, A/C hot and cold and both can enjoy lovely sea and pool views from there private terraces and share a full family bathroom. The master suite is also on this level again very spacious with lots of wardrobe space, private terrace and chill out area. Downstairs homes the 4th bedroom, again a spacious double and full bathroom. On the lower level you will find the entertaining area with ample terrace areas both covered and uncovered. The BBQ and kitchen area are nestled undercover alongside the Jacuzzi and is perfectly positioned for fabulous outdoor living. The pool is heated and enjoys the lovely views. There is also a pool table, table tennis area and dart board perfect for entertaining. The urbanisation has a lovely communal swimming

+34 951 123 083 | +44 (0)330 179 8687 | info@idiliqestates.com Local 28, Edificio D, Centro de Negocios Puerta de Banús, N-340, Km 175, 29660 Nueva Andalucía

IDILIQ

ESTATES

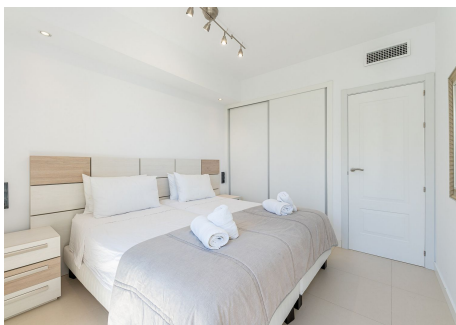
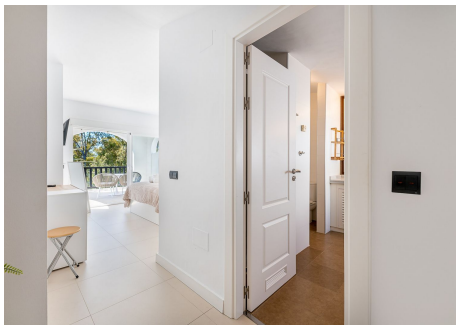
pool and impeccable garden area. More photos to follow This house is simply wonderfull, full of modern style, maintained in immaculate conditiong with great finishes. The owner is also including all the beautiful furniture and fittings priced at least 50,000€ Great property for a family residence, impressive holiday home and has the rental licence so would be an incredible rental investment. Benalmadena is located 19km west of Malaga International Airport and sits in between the coastal resorts of Torremolinos and Fuengirola. Its average rainfall per year is 610mm and has an average yearly temperature of 18 degrees. It has a population of 65,965 inhabitants. Benalmadena is one of the more popular tourist destinations on the Costa del Sol and is split into 3 main areas. These are the traditional and original settlement of Benalmadena, Benalmadena Pueblo, the cosmopolitan town of Arroyo de la Miel and the various areas that make up 10km of coast line, (13 beaches of which 5 are blue flag) that is Benalmádena Costa.



+34 951 123 083 | +44 (0)380 179 8687 | info@idiliqestates.com Local 28, Edificio D, Centro de Negocios Puerta de Banús, N-340, Km 175, 29660 Nueva Andalucía

IDILIQ

ESTATES



IDILIQ

ESTATES

