

IDILIQ

ESTATES



R4868437

📍 Atalaya

REF# R4868437 339.000 €

BEDS

2

BATHS

2

BUILT

96 m²

PLOT

40 m²

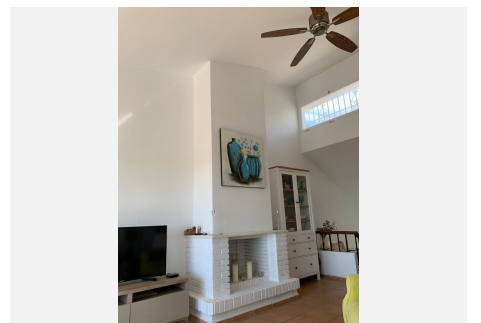
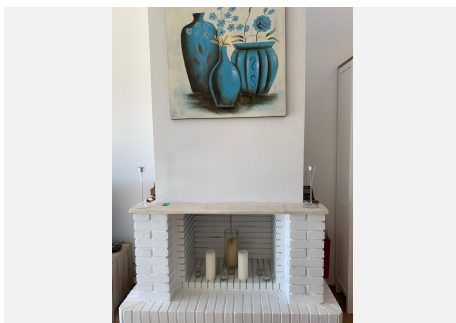
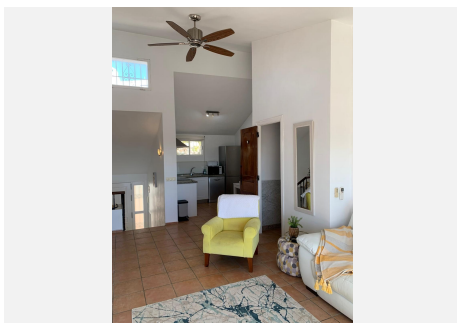
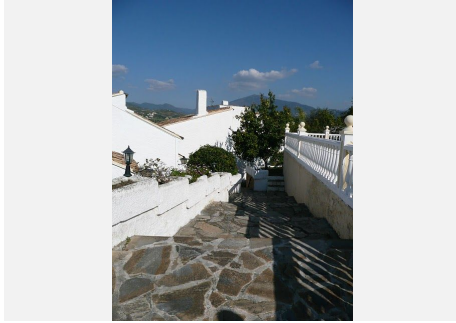
TERRACE

40 m²

Looking for that niche home? Something a little special, set in a small oasis offering peace and tranquility, this unique boutique style pueblo consists of just nine houses. This boasts a westerly aspect, guaranteeing you superb sunsets, views to Gibraltar, a little slice of heaven, what's not to love. The open plan lounge and kitchen loans itself to modern living, there is also a small cloakroom adjacent to the lounge. The ample terrace is the perfect place to enjoy the sunsets. Both bedrooms are located downstairs and share a modern bathroom with a walk in shower. There is a lower terrace leading on to a garden from the master bedroom, offering great outdoor, private space. There is a small storage room off the terrace for your convenience. The Atalaya Golf clubhouse is literally just around the corner and Diana Park commercial centre is within a twenty minute walk. The house is air conditioned throughout. There is a lovely communal pool set in immaculately maintained gardens. The house also has it's own parking place, this is a gated community.

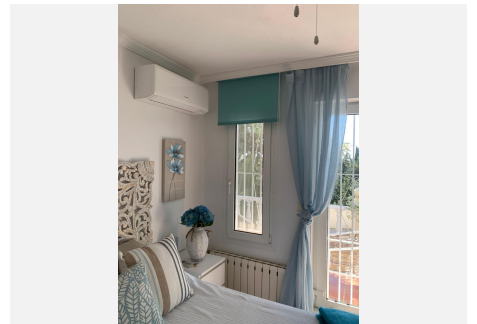
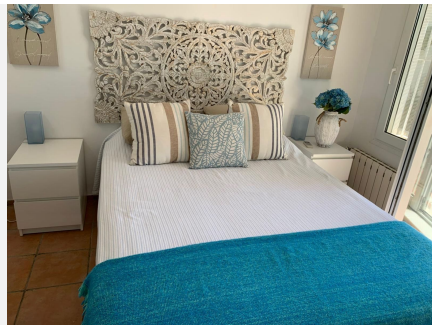
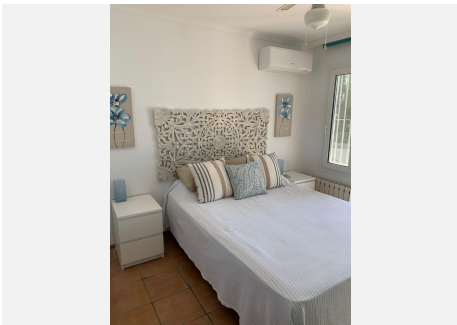
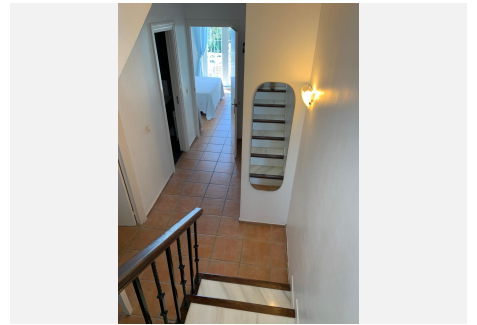
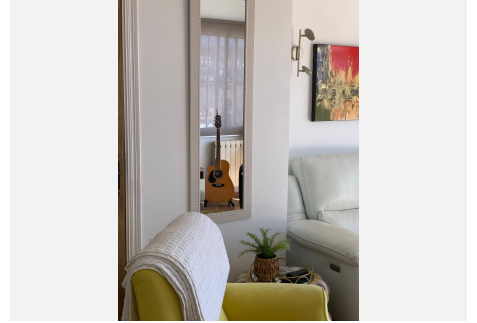
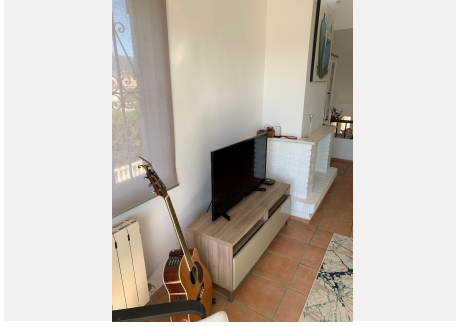
IDILIQ

ESTATES



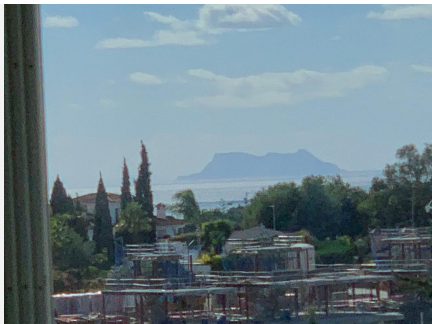
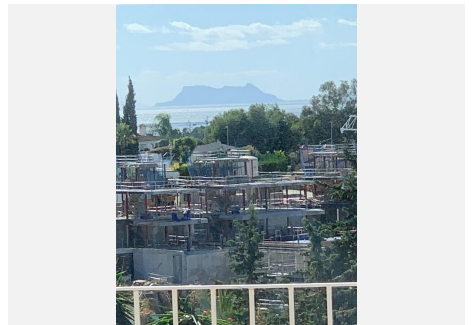
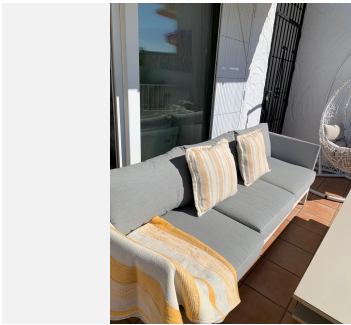
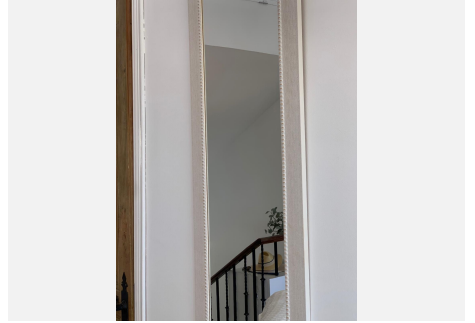
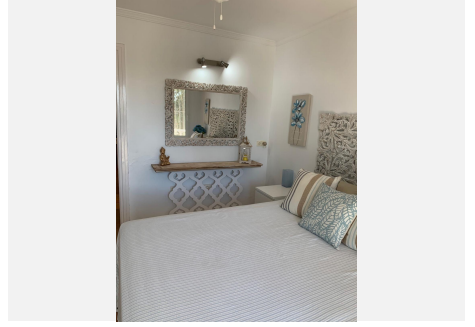
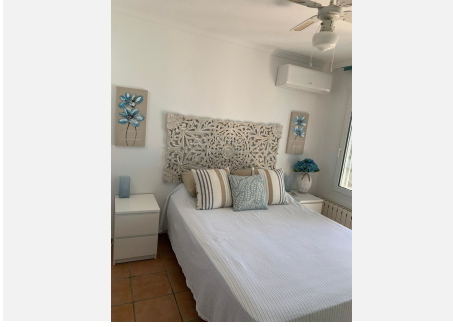
IDILIQ

ESTATES



IDILIQ

ESTATES



IDILIQ

ESTATES

