

IDILIQ

ESTATES



R4862419

📍 Elviria

REF# R4862419 345.000 €

BEDS

2

BATHS

2

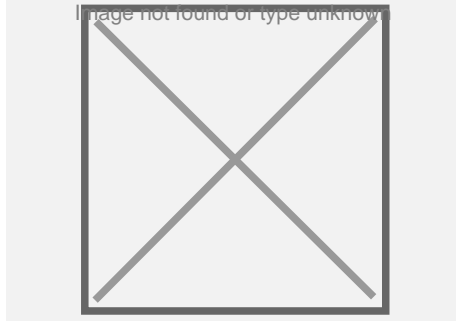
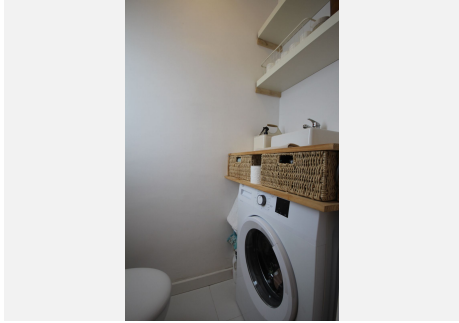
BUILT

83 m²

FANTASTIC PROPERTY LOCATED IN THE LOWER PART OF ELVIRIA, MARBELLA 5 MINUTES FROM ALL SERVICES OF INTEREST, RESTAURANTS, POST OFFICE, SUPERMARKETS, BUS, ETC CHARMING TOWNHOUSE ON TWO FLOORS, CONSISTING OF TWO BEDROOMS, TWO BATHROOMS, KITCHEN, LIVING ROOM WITH ACCESS TO A BEAUTIFUL TERRACE. FULLY FURNISHED AND DECORATED, IT IS DELIVERED READY TO MOVE INTO COMMUNITY AREAS: COMMUNITY POOL, PADEL COURT, MINI FOOTBALL, IT IS LOCATED IN AN AREA SURROUNDED BY GARDENS AND TREES.

IDILIQ

ESTATES



IDILIQ

ESTATES

