



R4861537

📍 Santa Clara

REF# R4861537 1.595.000 €

BEDS

4

BATHS

3

BUILT

166 m<sup>2</sup>

PLOT

153 m<sup>2</sup>

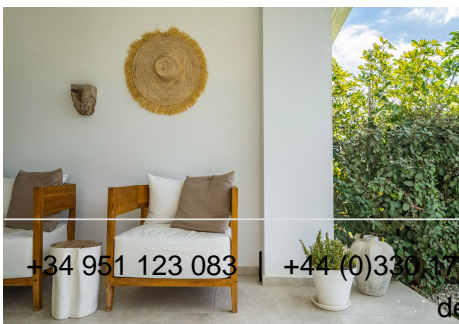
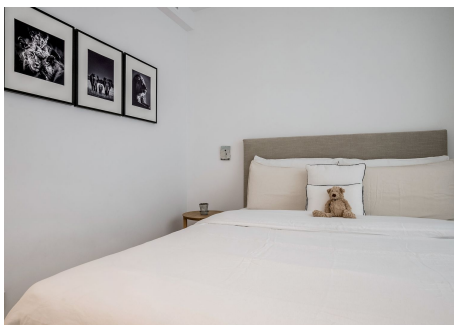
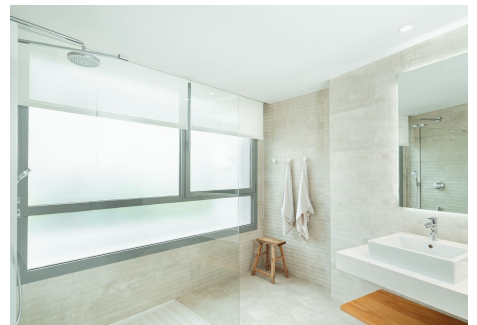
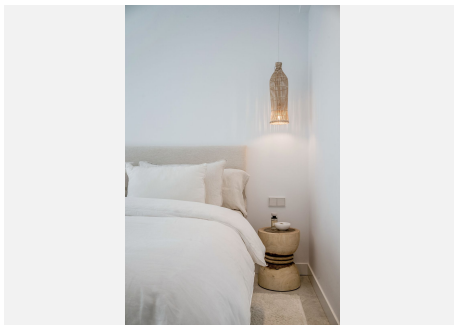
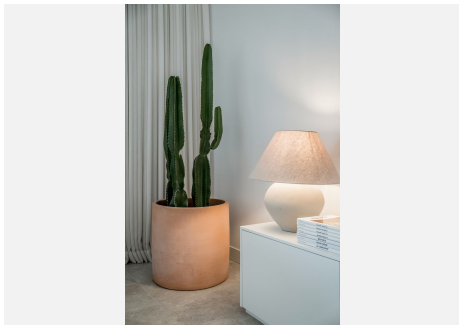
TERRACE

40 m<sup>2</sup>

Discover this key ready apartment in the heart of Santa Clara at Soul Marbella. Introducing a stunning 4-bedroom ground floor apartment offering the perfect blend of sophistication and comfort. Located in a brand-new Marbella development called Soul Marbella, this location is great because it is close to anything you might want, supermarkets, public transport, the hospital and under 5 min drive from the most exclusive beach clubs. Less than 10 min drive to Marbella centre and a 40 min drive from the airport. The apartment is set in a luxurious resort style urbanisation with all the amenities you would expect at a holiday resort. 2 outdoor and 1 indoor pool, spa and gym. With 24-hour security, concierge services, and proximity to essential facilities, every need is met with ease. The apartment itself is a ground floor unit with a large private garden and terrace with partly sea and mountain views. This apartment boasts a generously sized living room with a sleek, open plan modern kitchen and a separate utility room. 2 large master bedrooms with ensuite bathrooms and 2 bedrooms with a shared bathroom. All bedrooms have built in wardrobes. The apartment airconditioning and underfloor heating throughout. The property also has 2 private, underground, parking spaces and a large storage room. Amenities: - 24 hours security - Gated community - Concierge services - Daily cleaning communal areas - Gardener - 2 outdoor pools - 1 indoor pool - Gym - Spa with sauna and steam room - Zero gravity treatment - Aromatherapy showers - Cafeteria - Use of electrical bikes

+34 951 123 083 | +44 (0)330 179 8687 | info@idiliqestates.com Local 28, Edificio D, Centro de Negocios Puerta de Banús, N-340, Km 175, 29660 Nueva Andlucia

- Electrical car charge points





# IDILIQ

ESTATES

