

IDILIQ

ESTATES



R4861444

📍 Estepona

REF# R4861444 635.000 €

BEDS

2

BATHS

2

BUILT

119 m²

TERRACE

25 m²

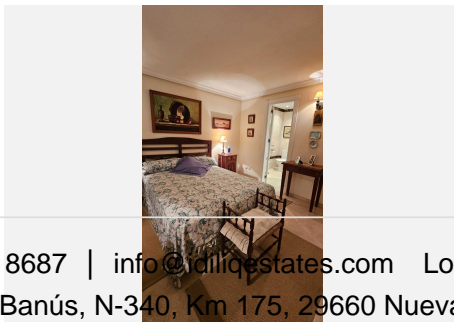
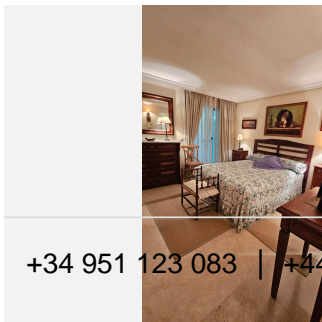
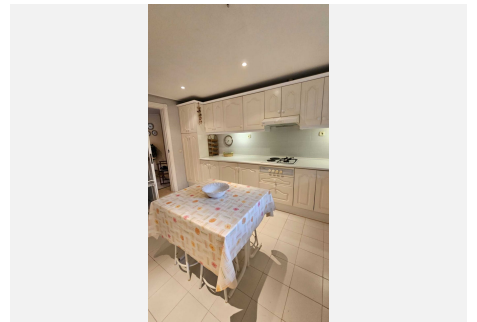
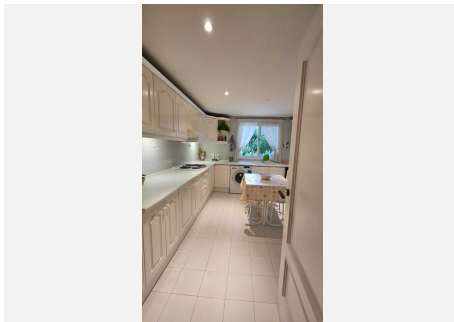
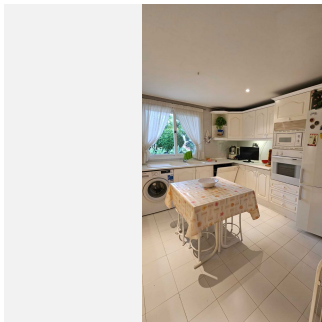
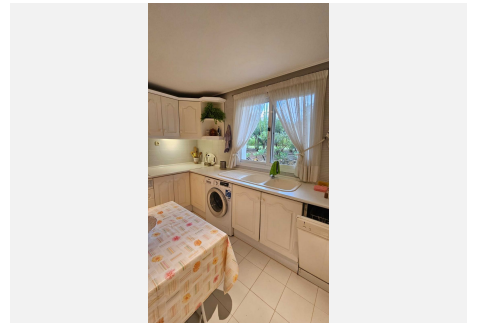
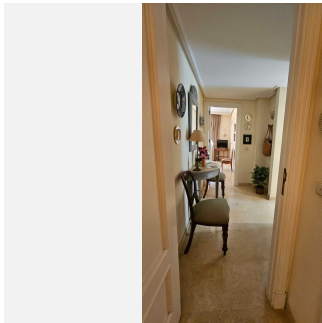
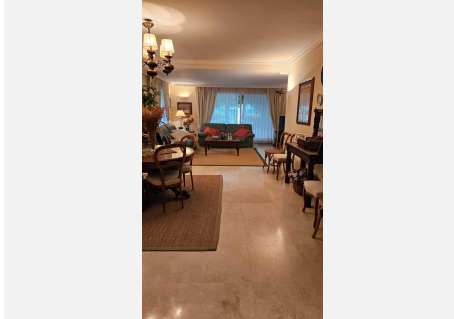
This upscale ground-floor apartment located along the prestigious New Golden Mile of Estepona, offers a combination of luxury, comfort, and stunning surroundings. Upon entry, the spacious and bright living room welcomes you, featuring a cozy fireplace and ample seating space. Large windows let in abundant natural light, opening up to a private covered terrace with a petite garden—ideal for outdoor relaxation or dining. The separate kitchen is generous in size, fully equipped with modern appliances, and has plenty of storage, making it perfect for culinary enthusiasts. A guest toilet adds convenience to the day area. The apartment includes two spacious bedrooms, each with an elegant en-suite bathroom. The rooms are tastefully decorated with built-in wardrobes for ample storage. The bathrooms feature high-end materials like marble, providing a touch of sophistication and luxury. The community is surrounded by lush subtropical gardens, creating a paradise-like atmosphere with pathways for leisurely strolls. Residents have access to fantastic amenities, including a heated swimming pool, a gym, and a poolside bar open throughout the year, all within a secure environment with 24-hour security. The location offers direct access to the beach while being conveniently close to local restaurants, golf courses, and various other attractions. It's just 10 minutes away from Estepona town, a 15-minute drive from Marbella and Puerto Banus, and about an hour's drive from Malaga and Gibraltar airports. This makes it an ideal home for those seeking both tranquility and access to

+34 951 123 083 | +44 (0)330 179 8687 | info@idiliqestates.com Local 28, Edificio D, Centro de Negocios Puerta de Banús, N-340, Km 175, 29660 Nueva Andlucia

IDILIQ

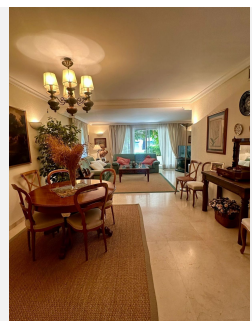
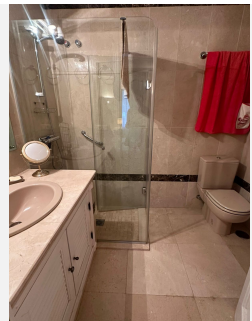
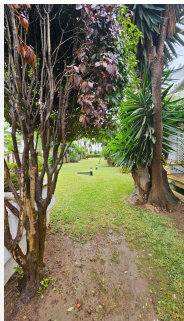
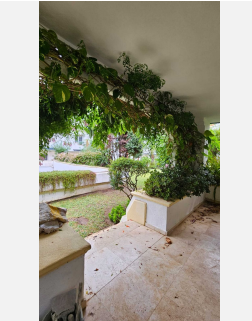
ESTATES

vibrant local life.



IDILIQ

ESTATES



IDILIQ

ESTATES

