

IDILIQ

ESTATES



R4860775

📍 Benahavís

REF# R4860775 3.850.000 €

BEDS

6

BATHS

6

BUILT

500 m²

PLOT

1000 m²

TERRACE

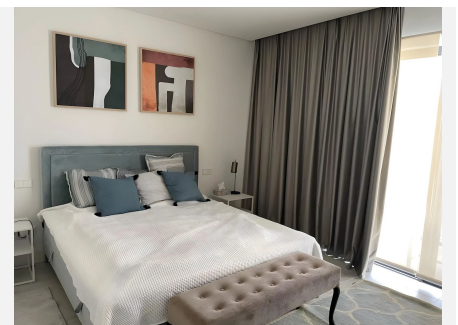
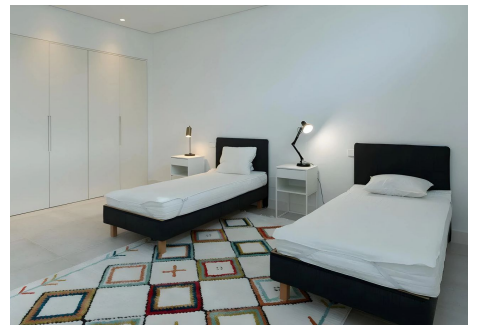
200 m²

Stunning Contemporary Villa in a Prime Golf Location near Marbella This exclusive 500m² villa offers breathtaking sea views and is situated in one of the most sought-after golf areas between Benahavís and Marbella, just a 10-minute drive from Puerto Banús. Designed with elegance and comfort in mind, the villa features 6 spacious bedrooms, each with its own bathroom, and an open-plan kitchen that flows seamlessly into a large, stylish living area. Perfect for entertaining, the property boasts expansive terraces, a barbecue area, and a large, heated swimming pool — ideal for year-round use. The basement offers an additional living/play area with a TV, providing the perfect retreat for large families or groups of friends. Located within a secure, gated community with full-time surveillance, this villa ensures privacy and peace. Layout: First Floor: Master suite with a walk-in closet, en-suite bathroom, and access to two private terraces. Ground Floor: Open-plan kitchen and living area, plus two double en-suite bedrooms, guest toilet, and laundry room. Basement: Three additional bedrooms with windows and bathrooms, plus a spacious family room with TV. Key Features: - Air conditioning throughout - High-end Miele kitchen appliances - Large fridge and freezer - Heated pool for cooler months - Blackout curtains in all rooms - Secure community monitoring This is a rare opportunity, as it's the first time the owners are offering this property for rental. The villa does not accommodate large events like hen or stag parties, ensuring a serene atmosphere for discerning guests.

+34 951 123 083 | +44 (0)330 179 8687 | info@idiliqestates.com Local 28, Edificio D, Centro de Negocios Puerta de Banús, N-340, Km 175, 29660 Nueva Andlucia

IDILIQ

ESTATES



IDILIQ

ESTATES

