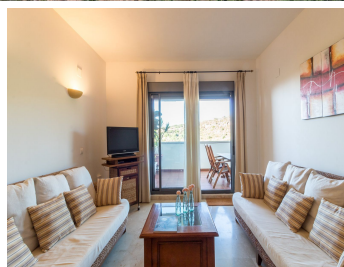
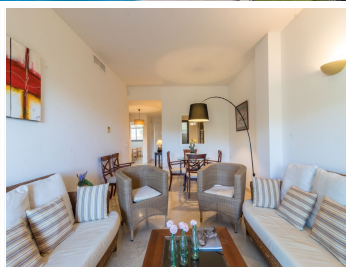


IDILIQ

ESTATES



R4851385

📍 Manilva

REF# R4851385 275.000 €

BEDS

2

BATHS

2

BUILT

100 m²

TERRACE

21 m²

Beautiful apartment with stunning sea views This property is located in a peaceful, semi-elevated area between La Duquesa and Sotogrande. It features a spacious entrance, a living/dining room, a fully equipped kitchen, a utility room, and two generously sized bedrooms, both with fitted wardrobes. There are two bathrooms (one en-suite) and a terrace offering breathtaking sea views. The south/west-facing terrace, accessible from both the living/dining room and the main bedroom, offers some of the best views of the African coast and Gibraltar. The apartment is in excellent condition and is being sold fully furnished. The purchase price includes one underground parking space and a storage room. The residential complex includes a paddle tennis court and a beautiful pool area surrounded by greenery. The nearest beach is just a 10-minute walk away, while supermarkets, restaurants, and other amenities are reachable within a short drive. Both Sotogrande and Puerto de la Duquesa are also just a quick drive away.

IDILIQ

ESTATES



IDILIQ

ESTATES

