

IDILIQ

ESTATES



R4846927

 Benahavís

REF# R4846927 699.000 €

BEDS

2

BATHS

3

BUILT

178 m²

TERRACE

49 m²

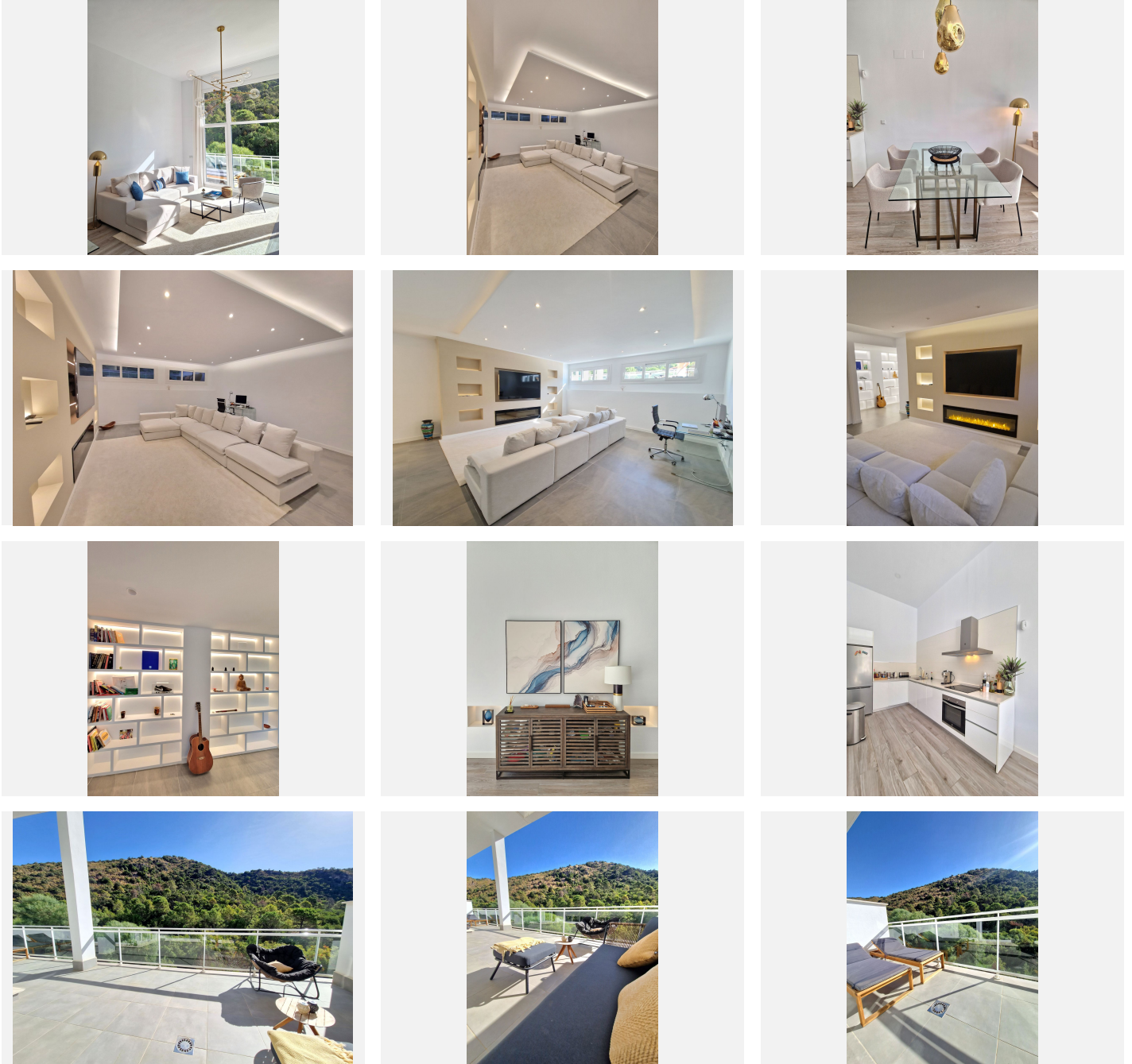
Stunning property located in the heart of Benahavis, walking distance to all amenities including many restaurants and only 15 minutes drive from Puerto Banus. Set in a gated community this apartment was completed in 2020 and is outstanding condition. The property is distributed over 3 levels, upon entering the front door there are two excellent sized bedrooms which both overlook a beautiful river and forest, there are 2 bathrooms on this level with the master bedroom having en suite. Moving down to the next level of the property is the open plan kitchen that opens up into the large and luminous living and dining area which features 4 metre high ceilings that give the property the feeling of being in a villa. This room leads out to a large terrace which boasts panoramic views of the forest and overlooks the river, the sounds of which is the perfect way to relax. The terrace is elevated above the ground below and is a great place to see birds like kingfishers flying by and watch the local herd of deer drinking from the river. Moving down the the next level of the property is a large cinema area that has a feature fire and huge sofa, a wonderful cosy place to relax and watch a movie on an evening. There is a utility room and the third bathroom on this level and could be used as another bedroom or place to sleep for visiting guests. Within a 5 minute walk are shops, bars and restaurants, sporting facilities including padel tennis courts, golf driving range and a gym, perfect for days you don't feel like getting in the car with Marbella's beaches just a few minutes drive away. This area is also

+34 951 123 083 | +44 (0)330 179 8687 | info@idiliqestates.com Local 28, Edificio D, Centro de Negocios Puerta de Banús, N-340, Km 175, 29660 Nueva Andlucia

IDILIQ

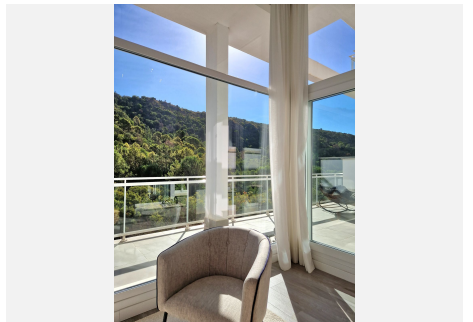
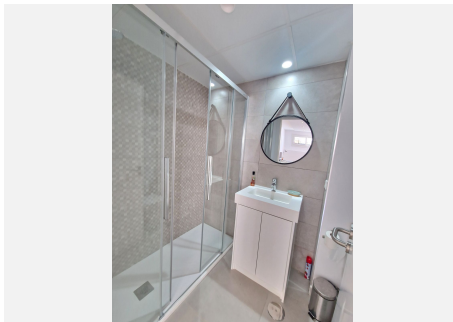
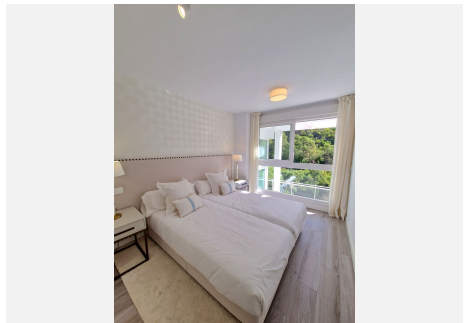
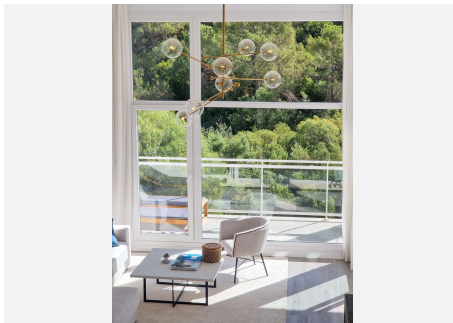
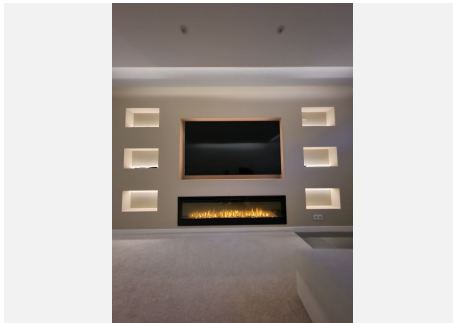
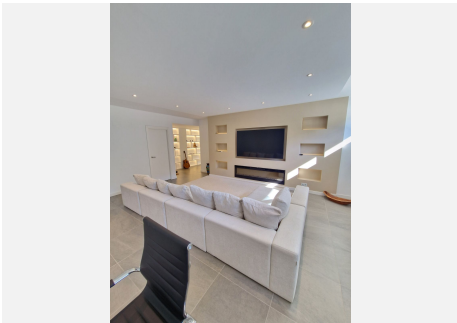
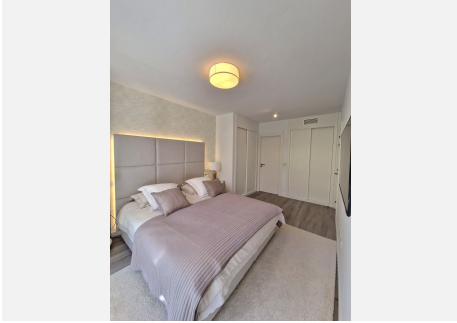
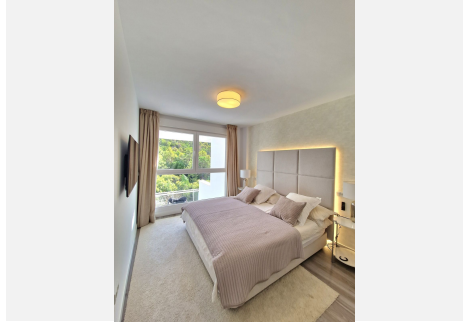
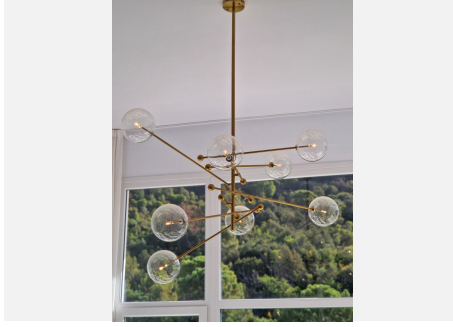
ESTATES

perfect for mountain biking, road biking, and hiking with a large number of trails. The excellent local school is located a 2 minutes walk away. There are 9 golf courses located within 10 minutes drive. The property comes with one large storage room and a secure underground parking place. It must be seen to be appreciated!



IDILIQ

ESTATES



IDILIQ

ESTATES

