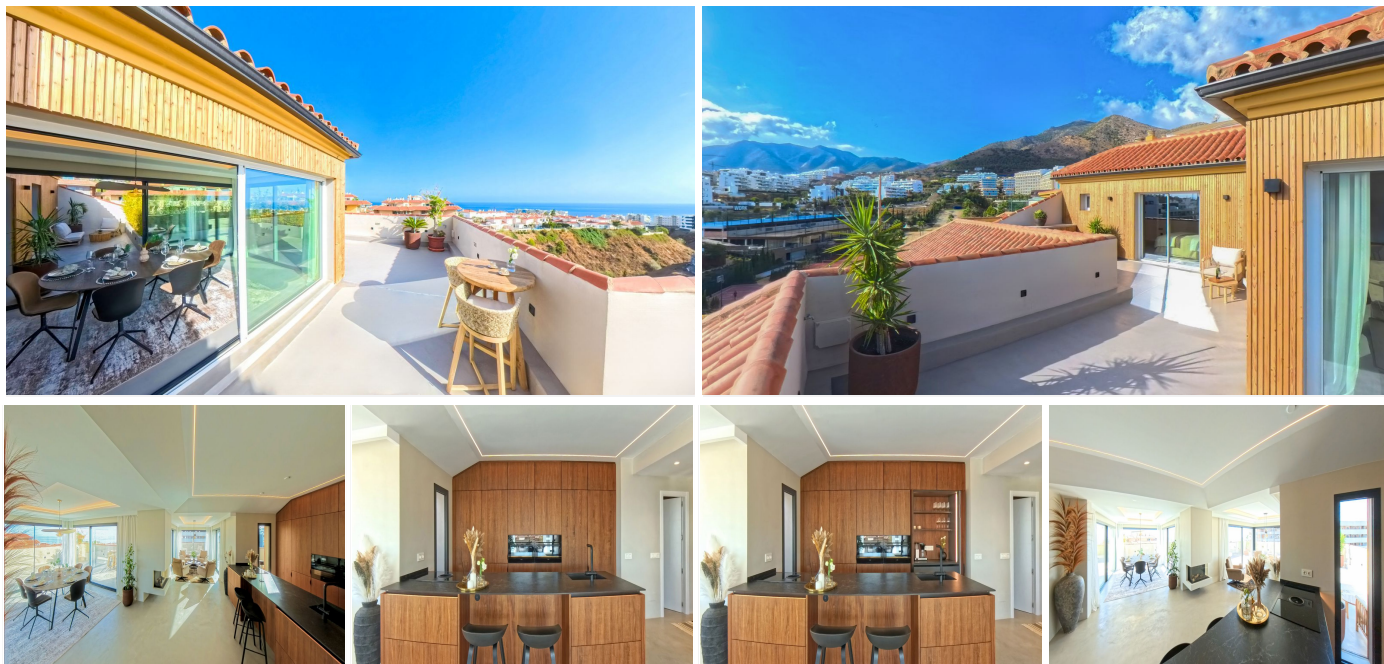


IDILIQ

ESTATES



R4841047

📍 Fuengirola

REF# R4841047 997.000 €

BEDS

3

BATHS

2

BUILT

284 m²

TERRACE

166 m²

Do you dream of a luxurious life in the sun? Now you have the chance to acquire a fully renovated penthouse in the exclusive El Higuero, Fuengirola—a home that combines Scandinavian minimalism with the magic of the Mediterranean. With a total of 284 square meters, divided among three inviting bedrooms and two elegant bathrooms, this residence offers a harmonious and sophisticated atmosphere. The heart of the apartment is the open-plan living area and the impressive 166-square-meter terrace, designed to give you maximum enjoyment of the stunning views. Whether you prefer the sun or the shade, the sparkling sea or the majestic mountains, you can always find your perfect spot here. Exclusive materials permeate the residence, and the Scandinavian design concept is enhanced by the minimalist decor, which is both stylish and functional. The home is fully furnished and ready for move-in—all you need to do is unpack and start enjoying your new home. In addition to all of this, a private parking space in the garage and a large storage room directly adjacent to the stairwell are included, providing the convenience you deserve. This penthouse is more than just a residence—it's a lifestyle. Don't miss the opportunity to make your dream of a home in El Higuero a reality. ****KITCHEN AND DINING ROOM**** This exclusive kitchen and dining room with an open-plan layout is characterized by modern elegance and thoughtful details. The kitchen is tastefully designed in walnut, with a composite countertop that offers both aesthetics and functionality. The centrally placed

+34 951 123 083 | +44 (0)330 179 8687 | info@idiliqestates.com Local 28, Edificio D, Centro de Negocios Puerta de Banús, N-340, Km 175, 29660 Nueva Andalucía

IDILIQ

ESTATES

kitchen island has two seats, perfect for informal meals or socializing while you cook. The island is equipped with an induction cooktop with an integrated fan, which smoothly captures cooking odors without disturbing the open character of the space. The appliances are sleekly integrated: oven, microwave, refrigerator, and freezer are all hidden behind elegant cabinet doors. Additionally, there's a smartly integrated coffee cabinet that can be easily opened when your morning coffee calls. The dining area offers generous seating for 8 people and is surrounded by large sliding doors that lead out to the spacious terrace. Here, you can enjoy sun all day, with a fantastic view of both the sea and the mountains. This magical view adds an extra dimension to your meals, making the dining area the heart of the home. The open-plan layout with built-in LED lighting in the ceiling creates a soft and pleasant atmosphere. The continuous microcement flooring provides a cohesive and stylish feel, elegantly tying together the different parts of the rooms. A cozy fireplace is strategically placed between the kitchen, dining area, and lounge. It warms the entire room and creates an inviting and cozy atmosphere, perfect for cooler winter evenings. This is a space that combines function and beauty, where every detail is carefully chosen to create a harmonious and luxurious environment.

****LOUNGE**** The combined living room and lounge is an elegant and stylish area that exudes modern design. The room is surrounded by large sliding doors that provide a seamless transition to the incredible terrace, where you can choose to enjoy the magical sea view or mountain view. The open-plan layout extends to the kitchen, creating an inviting and social atmosphere. A mood-enhancing fireplace gives the room a warm and cozy feel, perfect for relaxing moments. The TV is tastefully integrated into the decor, while the built-in LED lighting highlights the modern details. The floor is covered with elegant microcement, which enhances the room's exclusive character and elegantly ties together the different spaces.

****MASTER BEDROOM**** This luxurious master bedroom is a harmonious oasis with a large, open space that seamlessly blends with an elegantly integrated bathroom. The bedroom floor and the bathroom's ceiling and walls are adorned with modern microcement, giving a sophisticated and cohesive feel. Two anthracite gray frosted glass walls surround both the rain shower and toilet, creating a private yet airy space. Between these is a double sink with a sleek, backlit mirror. For added comfort, the room is equipped with dimmable recessed spotlights and discreetly recessed LED lighting in the ceiling, allowing you to create the perfect ambiance at any time of day. A spacious walk-in closet offers ample storage and makes the room feel even more luxurious. Large sliding doors lead from the bedroom to the terrace, where you can enjoy the sunset and stunning views of both the sea and mountains. This is a room designed to be a sanctuary of peace and elegance.

****SECOND BEDROOM**** This room offers a harmonious combination of style and functionality. The ceiling is adorned with recessed LED lighting, creating a warm and inviting atmosphere. The floor is covered with elegant microcement, giving the room a modern and seamless feel. A built-in wardrobe stretches along the entire wall, offering generous storage space without compromising on aesthetics. Large sliding doors lead out to a terrace that bathes in morning sun, perfect for starting the day with a cup of coffee. From the terrace, you can enjoy a fantastic view of both the sea and the surrounding mountains, enhancing the feeling of being in an exclusive and nature-close home.

****THIRD BEDROOM**** The smallest bedroom in the apartment is a cozy room with a modern and stylish design. The ceiling is adorned with recessed LED lighting that provides a soft and pleasant light. The floor is covered with elegant microcement, contributing to a cohesive and minimalist feel. The room has sliding doors that lead out to the terrace, where the morning sun spreads its light and creates a peaceful atmosphere. From the terrace, you can enjoy a spectacular view of both the sea and the mountains, making this room a perfect place for relaxation and tranquility.

****SECOND BATHROOM**** Opposite the second and third bedrooms is an elegant bathroom that exudes style and modernity. Underfloor heating, a handheld shower next to the toilet, recessed lighting, and microcement-covered floors, walls, and ceiling contribute to a luxurious feel. The shower cabin is a visual delight with its anthracite gray frosted glass walls that create a sense of privacy and luxury. A rain shower

+34 951 123 083 | +44 (0)330 179 8687 | info@idiliqestates.com Local 28, Edificio D, Centro de Negocios Puerta

de Banús, N-340, Km 175, 29660 Nueva Andalucía

IDILIQ

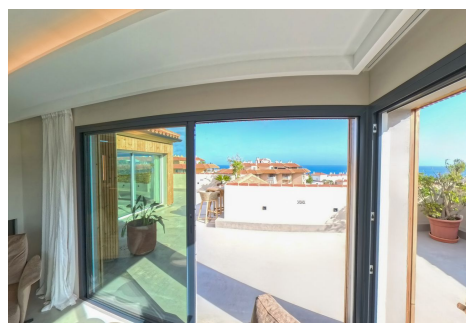
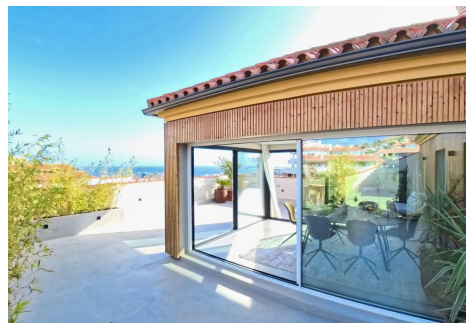
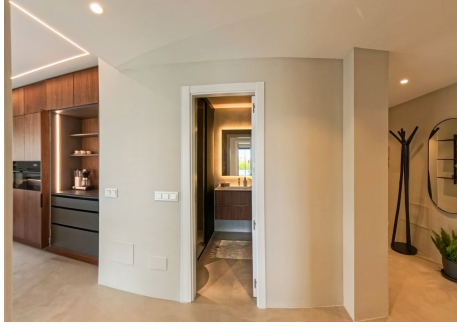
ESTATES

provides a delightful shower experience, while a backlit wall mirror above the sink adds both function and atmosphere. The walnut bathroom cabinet offers a warm contrast to the otherwise modern room, contributing to an inviting and harmonious overall feel. ****COMMUNITY**** The community offers a magnificent garden that is lush and well-established. In this large, well-maintained garden, you can always find a peaceful spot to relax, whether you prefer shade or sun. The garden is a beautiful, tranquil oasis that includes park benches, parasols, a pergola, and a cozy pond with both turtles and fish, where a fountain adorns the center. Peacefully nestled in the garden are also two large pool areas, one of which is heated and open year-round, offering comfort and relaxation regardless of the season. ****AREA INFO**** The Reserva del Higuérón area offers a first-class range of amenities, such as a spa, a sports club, a 5-star hotel, several restaurants including a Michelin-awarded gourmet restaurant, a beach club, and a complimentary shuttle bus that takes you to shops, supermarkets, the beach, and the nearby Carvajal train station, making it easy to travel to both Fuengirola and Malaga, including the airport.



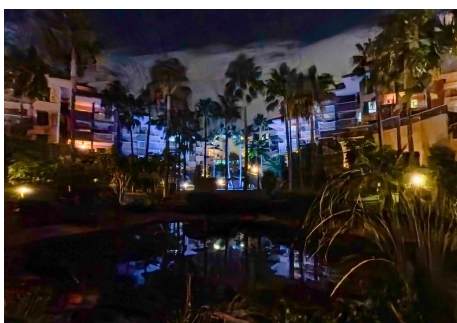
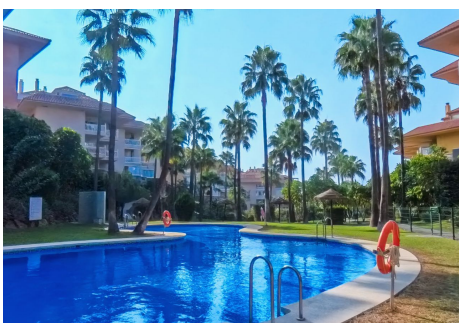
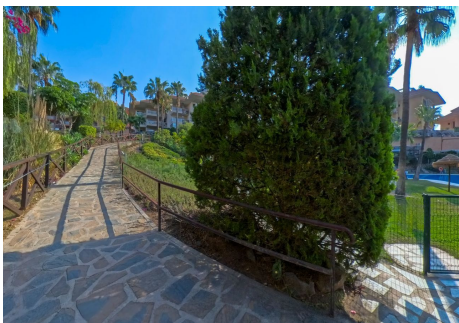
IDILIQ

ESTATES



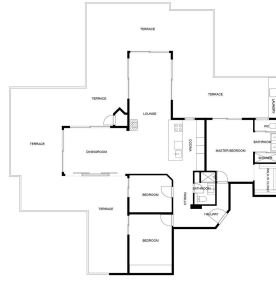
IDILIQ

ESTATES



IDILIQ

ESTATES



LAS MEDIDAS SON CALCULADAS UTILIZANDO LA TECNOLOGIA DIBUCADA, SON DE ALTA PRECISION PERO NO GARANTIZADAS.