


IDILIQ

ESTATES



R4839730

 Cerros del Aguila

REF# R4839730 1.275.000 €

BEDS

4

BATHS

5.5

BUILT

514 m²

PLOT

760 m²

Discover this incredible villa, peacefully located in the quiet urbanisation, Cerros del Águila, with breathtaking panoramic views that stretch as far as the eye can see. Upon arriving to the villa you can either park in the private driveway or in the garage where there's space for 2 cars. Here you are greeted by an inviting 514 m² villa that radiates tranquillity, quality and relaxation, enhanced by several distinctive features. The ground floor offers a bright entrance hall where you'll find the staircase leading both to the first floor as well as the lower level. The ground floor also offers 2 spacious bedrooms with en-suite bathrooms, a guest toilet, a dining area with access to a grand terrace, a kitchen with utility room and a big living room, also giving access to the same terrace. There's a lovely fireplace in the living room, inviting to cozy evenings during the colder months. From the terrace you have plenty of potential lounge-areas from where you can enjoy the incredible views. There's also steps leading to the terrace on the lower level. The first floor consists of a main bedroom with en-suite bathroom and a big terrace from where you can really appreciate the views. Whether you enjoy the mountain view, sea views or views of Mijas Pueblo, you can experience it from this terrace. Coming down to the lower level of the villa, you have access to the garage. You'll also find another bedroom (with en-suite bathroom), an additional bathroom, a room functioning as a bedroom, and another living room and kitchen. From both the kitchen, one fo the bedrooms and the en-suite bathroom you

+34 951 123 083 | +44 (0)330 179 8687 | info@idiliqestates.com Local 28, Edificio D, Centro de Negocios Puerta de Banús, N-340, Km 175, 29660 Nueva Andlucia

IDILIQ

ESTATES

can access the downstairs terrace which includes the big saltwater pool and plenty of space for relaxation. There is the possibility of installing an elevator between the ground floor and the lower level. If you are looking for a property that represents a perfect combination of luxury, character, and tranquility, then this is the home for you!



IDILIQ

ESTATES



IDILIQ

ESTATES

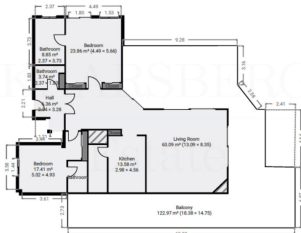


IDILIQ

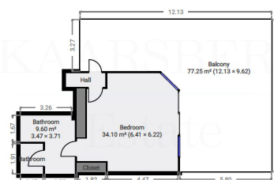
ESTATES



NOT TO SCALE
ground floor



NOT TO SCALE
1st floor



NOT TO SCALE
over level

