

IDILIQ

ESTATES



R4837603

 Atalaya

REF# R4837603 325.000 €

BEDS

2

BATHS

3

BUILT

100 m²

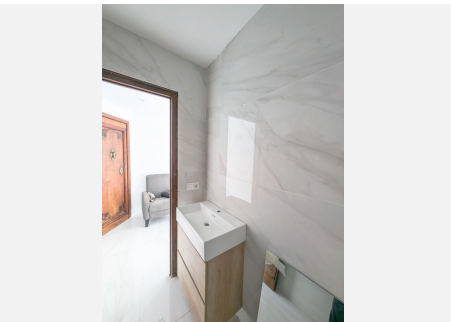
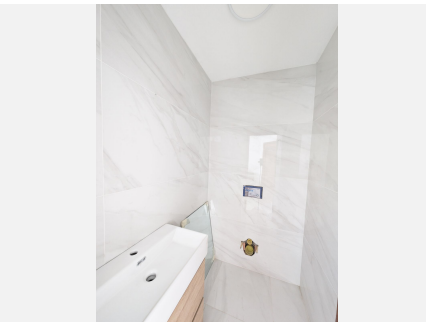
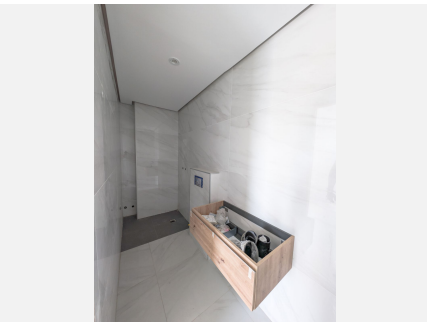
TERRACE

48 m²

2 bedroom corner apartment in one of Atalaya's most desirable urbanisations next to the Atalaya Golf Club. The apartment is in the final stages of renovation and can be finished according to taste with the last extras, doors, kitchen and bathroom equipment. Consisting of 2 bedrooms and 3 bathrooms spread over 100sqm living area, 2 balconies with a total area of ??48sqm with south / east orientation. The apartment is located in a private and secure community with a communal pool, garden and communal parking for all the owners next to the Atalaya Golf Club. The apartment consists of a sunny living / dining room with access to the private terrace with panoramic views of the golf course, the sea and the mountain "La Concha". Breathtaking view in a beautiful location! Hot water and electricity are included in the community fees.

IDILIQ

ESTATES



IDILIQ

ESTATES

