



R4836481

📍 Manilva

REF# R4836481 440.000 €

BEDS

2

BATHS

2

BUILT

135 m<sup>2</sup>

TERRACE

15 m<sup>2</sup>

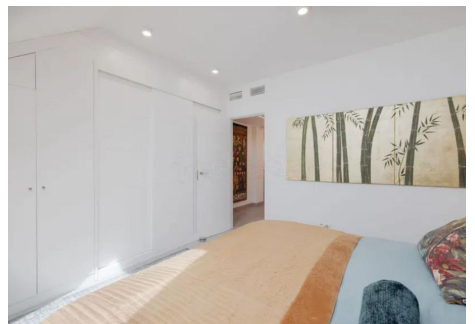
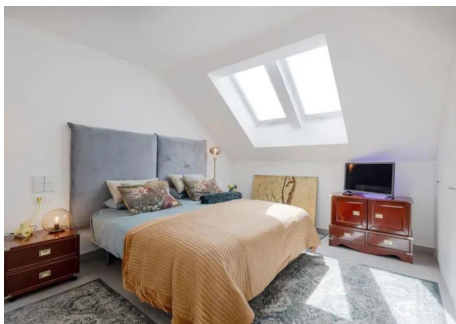
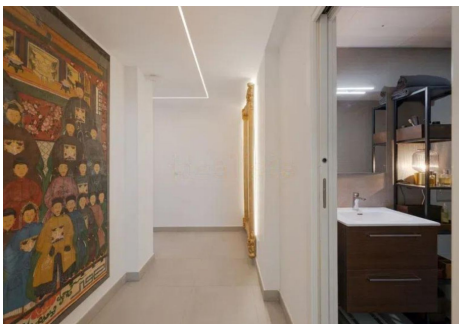
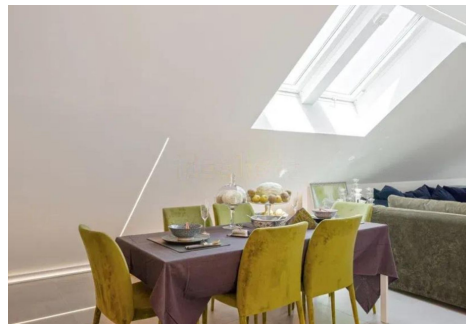
Corner penthouse with stunning views of the Mediterranean Sea with an impressive panoramic view of Puerto de la Duquesa, Estepona, African coast.. . ) and the mountain. New construction of two large bedrooms with 2 bathrooms and fitted wardrobes, large living room with views of the Mediterranean coast and (new construction) renovated and equipped with design, large kitchen equipped with latest generation appliances (Induction ceramic hob by panels, Teppanyaky on countertop, Industrial extraction hood, large capacity refrigerator, wine cellar.. . ) Exclusive extra large Portobello granite countertop, installation of designer lights embedded in the plasterboard, floors and skirting boards with touch controls by zones, temperature sensor and light brightness, extra-large Velux windows with motorized blinds and opaque and luminosity blinds controlled by remote control, Central air conditioning, complete bathrooms with extra-large screens, completely new designer furnished (sofas, furniture, latest generation televisions, appliances). Extra large garage space with storage room, gym, swimming pool with garden, social club, no neighbors on the landing of the door. A unique property for its impressive views in front of the sea and on top of a hill with vegetation, spacious and quiet. Ready to move in and enjoy. Penthouse, Manilva, Costa del Sol. 2 Bedrooms, 2 Bathrooms, Built 135 m<sup>2</sup>, Terrace 15 m<sup>2</sup>. Setting : Urbanisation. Orientation : South. Condition : Excellent. Pool : Communal. Climate Control : Air Conditioning, Cold A/C. Views : Sea. Features : Covered

+34 951 123 083 | +44 (0)330 179 8687 | info@idiliqestates.com Local 28, Edificio D, Centro de Negocios Puerta de Banús, N-340, Km 175, 29660 Nueva Andlucia

# IDILIQ

ESTATES

Terrace, Lift, Fitted Wardrobes, Private Terrace, WiFi, Gym, Storage Room, Utility Room, Ensuite Bathroom, Access for people with reduced mobility, Marble Flooring, Double Glazing, Fiber Optic. Furniture : Fully Furnished. Kitchen : Fully Fitted. Garden : Communal. Security : Gated Complex. Parking : Underground, Garage. Category : Resale.



# IDILIQ

ESTATES

