

# IDILIQ

ESTATES



R4835380

📍 Torremuelle

REF# R4835380 1.590.000 €

BEDS

5

BATHS

2

BUILT

312 m<sup>2</sup>

PLOT

836 m<sup>2</sup>

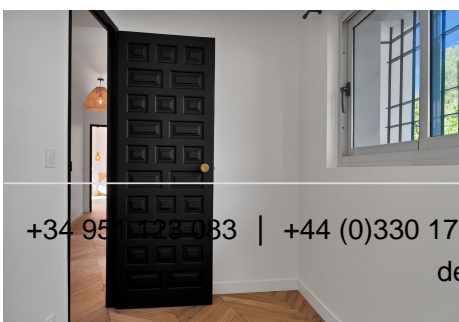
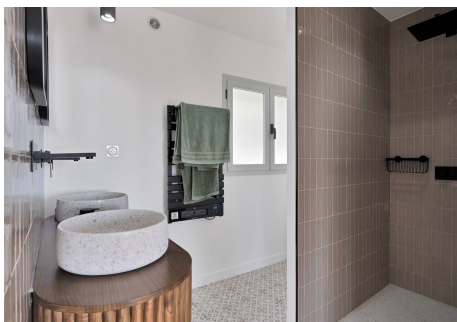
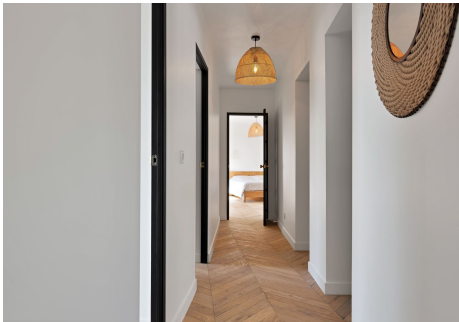
Superb villa of one floor with sea views Discover this magnificent, fully renovated villa, located in an exclusive community with sports centre (8 padel courts and 2 tennis courts, terrace, cafeteria and massage treatments are available), semi-Olympic swimming pool and green areas. With 312 m<sup>2</sup> of built area and a plot of 836 m<sup>2</sup>, this property offers an exceptional living environment. The villa has 5 bedrooms, including a master suite with private terrace. Enjoy uninterrupted views of the sea and surrounding vegetation from every room. The fully-equipped kitchen with central island is a real asset for food lovers. The solid oak flooring adds a touch of elegance to the whole house. What's more, the villa comes fully furnished and decorated, so you can move in straight away with no worries. Separate from the main house, a staircase gives access to a relaxation area comprising a table with 4 bar stools, a section of wall has been created to accommodate a wine cellar, coffee machine, microwave and various storage units. This room has a separate toilet. Outside, a welcoming terrace with garden furniture for 6 people awaits you for moments of relaxation with family or friends while contemplating the sea view. On the street, two closed garages for one car and motorbike have also been renovated and equipped with automatic doors, and in one of them, a lift gives direct access to the main house. Torremuelle station and the beach are just a few minutes' walk away, as are the bus and taxi ranks. Three restaurants and a mini-market are also available, as is the British

+34 951 123 083 | +44 (0)330 179 8687 | info@idiliqestates.com Local 28, Edificio D, Centro de Negocios Puerta de Banús, N-340, Km 175, 29660 Nueva Andalucía

# IDILIQ

ESTATES

College for children aged 2 to 18. Don't miss this unique opportunity to live in an idyllic setting. Contact us for more information and to arrange a visit!



+34 951 123 083 | +44 (0)330 179 8687 | [info@idiliqestates.com](mailto:info@idiliqestates.com) Local 28, Edificio D, Centro de Negocios Puerta de Banús, N-340, Km 175, 29660 Nueva Andalucía

# IDILIQ

ESTATES

