

IDILIQ

ESTATES



R4829284

📍 Santa Clara

REF# R4829284 2.690.000 €

BEDS

4

BATHS

3

BUILT

514 m²

PLOT

785 m²

TERRACE

102 m²

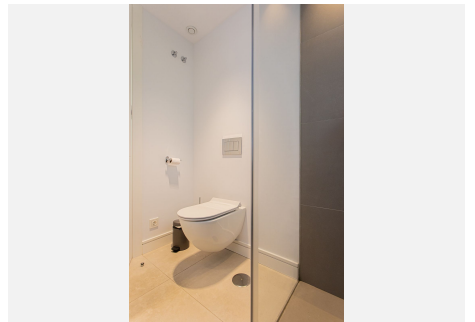
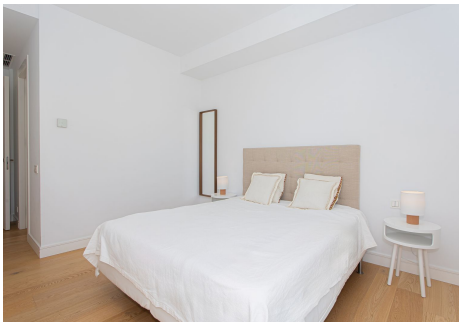
Modern Villa with Panoramic Sea Views in Santa Clara Golf Discover a luxurious contemporary villa nestled in the prestigious Santa Clara Golf community. This stunning property offers the perfect blend of modern design, breathtaking views, and convenient location. Enjoy panoramic sea views that stretch across the Mediterranean coastline. Watch the sunrise over the ocean from your private terrace or relax by the pool while taking in the stunning scenery. Located close to renowned schools and amenities, this villa provides a convenient and family-friendly lifestyle. Enjoy easy access to shopping centers, restaurants, and recreational facilities. Just a short drive from the vibrant Marbella town center and the exclusive Puerto Banús marina, you'll have access to a wide range of activities, including world-class shopping, dining, and nightlife. The villa is situated close to the beach, offering easy access to the golden sands and crystal-clear waters of the Mediterranean. Spend your days swimming, sunbathing, or exploring the beautiful coastline. Benefit from 24-hour security for added peace of mind and enjoy the convenience of a brand-new, fully furnished home. Key Features: Contemporary design with panoramic sea views Convenient location near schools, amenities, and beaches Close proximity to Marbella town and Puerto Banús 24-hour security Brand new and fully furnished Experience the epitome of luxury living in this exceptional villa. Contact us today to schedule a viewing. 4 Bedrooms, 3 Bathrooms, Built 514 m², Terrace 102 m², Garden/Plot 785 m².

+34 951 123 083 | +44 (0)330 179 8687 | info@idiliqestates.com Local 28, Edificio D, Centro de Negocios Puerta de Banús, N-340, Km 175, 29660 Nueva Andlucia

IDILIQ

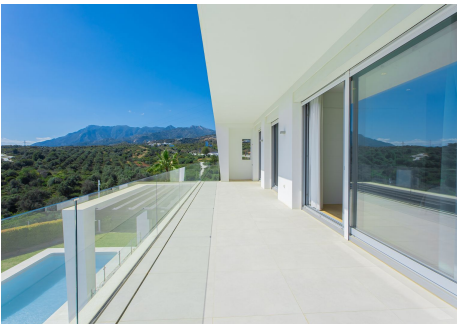
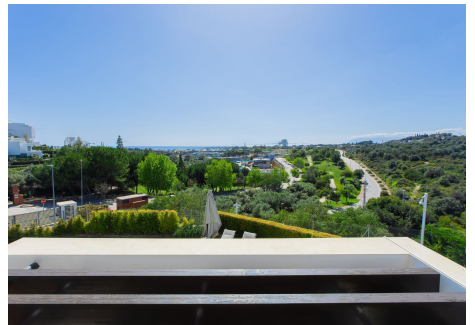
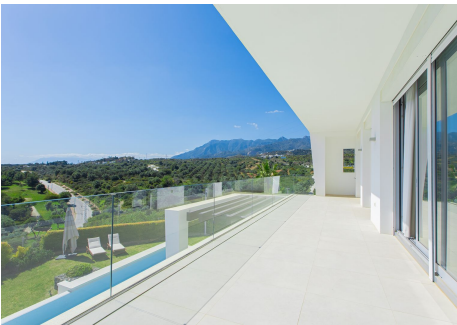
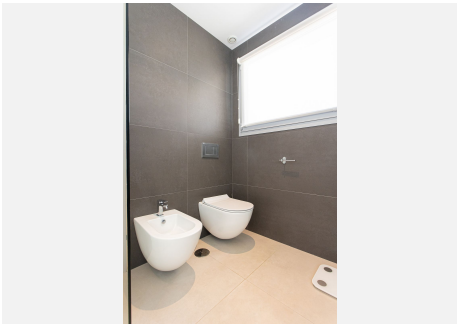
ESTATES

Setting : Frontline Golf, Close To Golf, Close To Schools, Urbanisation. Orientation : South West. Condition : Excellent. Pool : Private. Climate Control : Air Conditioning, Central Heating. Views : Sea, Golf, Panoramic, Garden, Pool. Features : Covered Terrace, Private Terrace, Utility Room, Marble Flooring, 24 Hour Reception. Furniture : Fully Furnished. Kitchen : Fully Fitted. Garden : Private, Easy Maintenance. Security : Entry Phone, Alarm System, 24 Hour Security. Parking : Covered, Private. Utilities : Electricity, Drinkable Water. Category : Luxury, Resale.



IDILIQ

ESTATES



IDILIQ

ESTATES

