



R4828366

 Benalmadena Costa

REF# R4828366 2.595.000 €

BEDS

6

BATHS

5.5

BUILT

645 m²

PLOT

729 m²

TERRACE

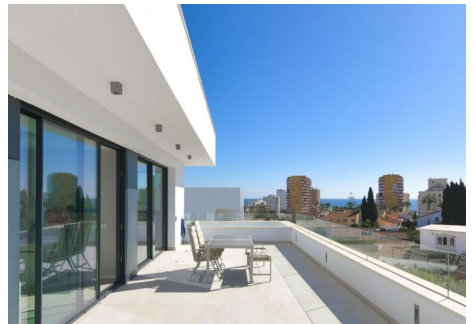
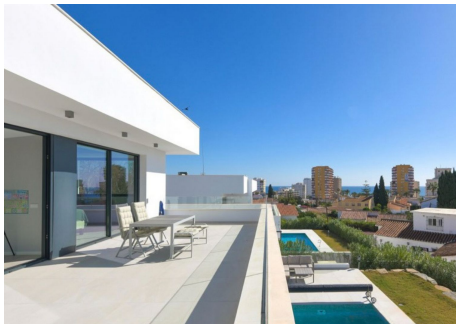
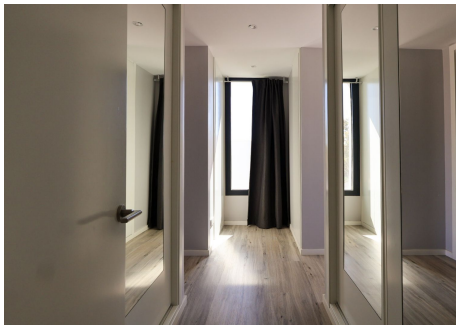
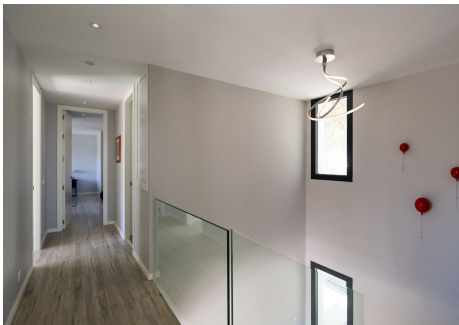
178 m²

Spectacular Contemporary Villa in Benalmádena – only 500 Meters from the Beach Step into luxury with this exclusive, recently built villa in the sought-after Puerto Marina area of Benalmádena. Offering 6 spacious bedrooms and 5+2 elegant bathrooms, this home features contemporary Scandinavian design and premium finishes, perfectly suited for the Costa del Sol lifestyle. Highlights include - Large sunny terraces and a private saltwater pool, heated for year-round relaxation. - Filtered water system throughout the villa. - Underfloor heating on the main and basement levels. - Individually controlled AC in every room for personalized comfort. - Electric blinds for privacy and ease of use. - Floor-to-ceiling windows that blend indoor and outdoor spaces seamlessly. - Electric glass doors for easy access to the terraces and pool. - Electric car charger by the parking area. - Spacious cooling room for food and beverages. - Basement with a cinema room, full spa area (Jacuzzi, sauna, Turkish bath), and a bar and lounge area perfect for entertaining. Located just 500 meters from award-winning beaches and within walking distance to all amenities, this villa provides easy access to shops, restaurants, and leisure activities, including the 18-hole Torrequebrada Golf course, Selwo Marina, and Paloma Park. It's less than 15 minutes from Málaga Airport and 35 minutes from Marbella. Enjoy the best of both worlds: peaceful coastal living with vibrant world-class amenities at your doorstep.

+34 951 123 083 | +44 (0)330 179 8687 | info@idiliqestates.com Local 28, Edificio D, Centro de Negocios Puerta de Banús, N-340, Km 175, 29660 Nueva Andalucía

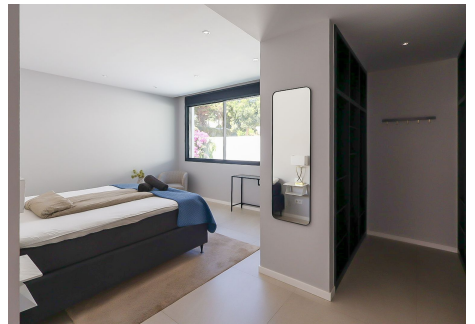
IDILIQ

ESTATES



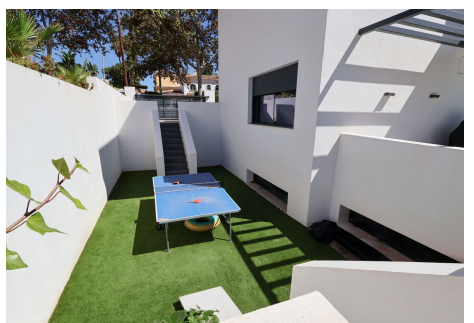
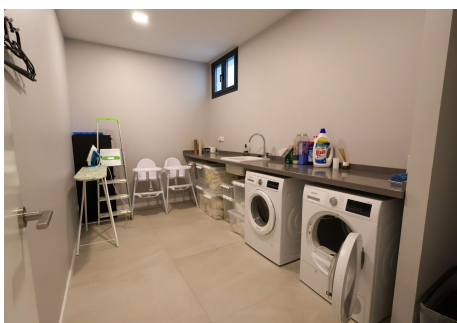
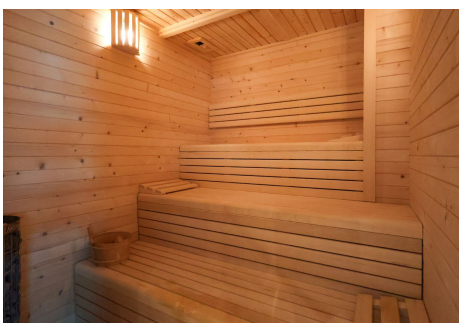
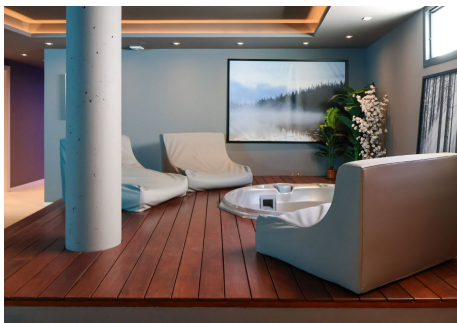
IDILIQ

ESTATES



IDILIQ

ESTATES



IDILIQ

ESTATES

