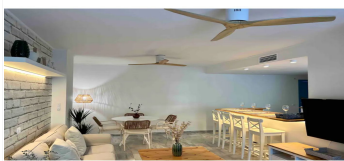
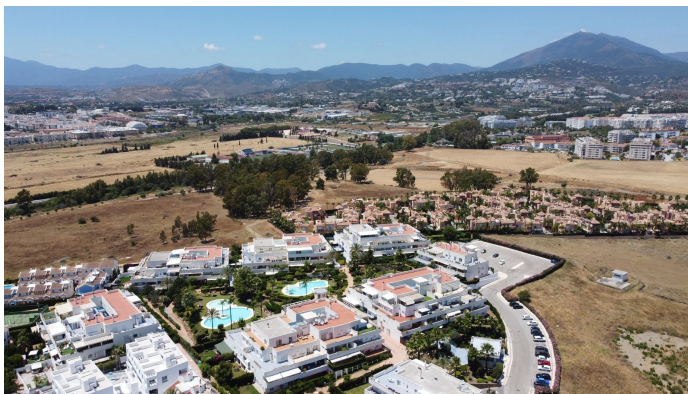


IDILIQ

ESTATES



R4827421

 Nueva Andalucía

REF# R4827421 410.000 €

BEDS

2

BATHS

2

BUILT

108 m²

PLOT

1 m²

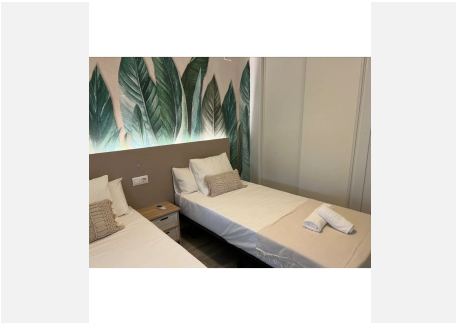
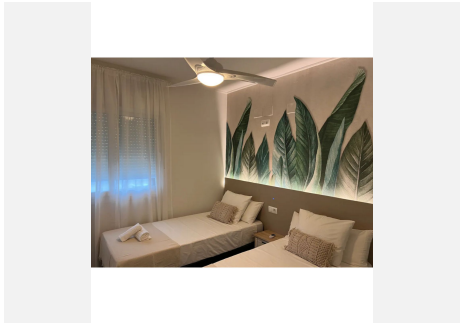
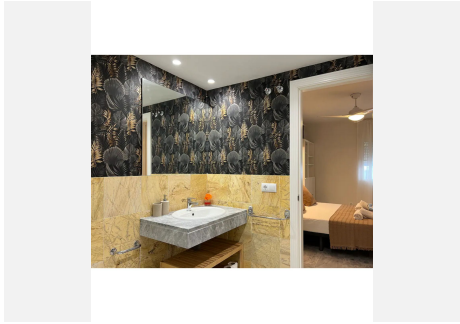
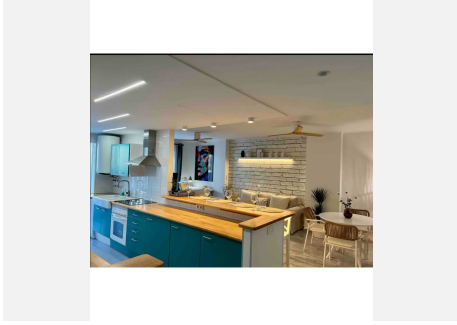
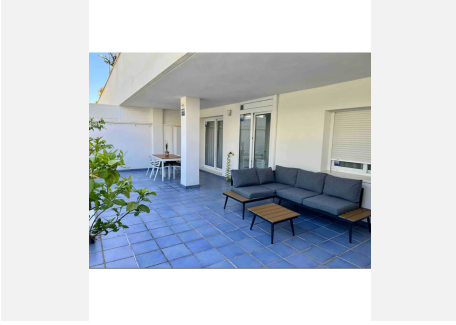
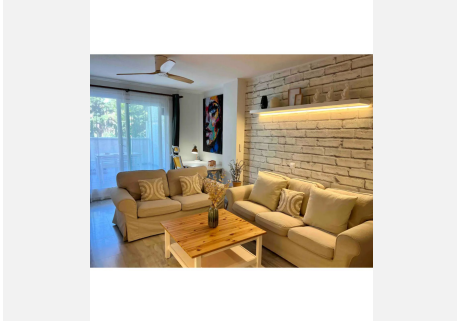
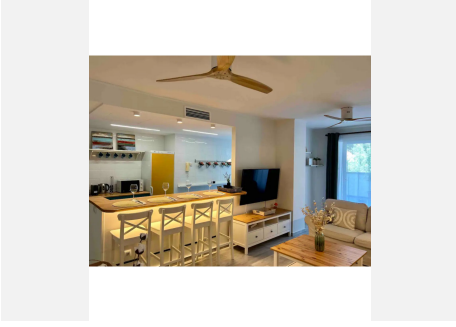
TERRACE

50 m²

Nueva Andalucía, less than 5 minutes by car from Puerto Banus and walking distance to some shops and the famous Marbella Real gym and padel club. This is a nice & spacious, first floor, 2 bedroom 2 bathroom apartment with a large terrace overlooking the manicured gardens and large swimming pool, an ideal property to enjoy with the family. The property features an open plan fully fitted kitchen, marble floors throughout, hot/cold air conditioning, fitted wardrobes and a large 45m² terrace (access from both the living room & kitchen). The established residential complex is well known due to its proximity to Puerto Banus, its large communal areas which include a playground, a basketball/football court, 2 large swimming pools plus a children's pool, landscaped gardens & padel court, The price includes a parking suitable for up to 2 cars.

IDILIQ

ESTATES



IDILIQ

ESTATES

