

IDILIQ

ESTATES



R4822006

📍 Guadalmina Baja

REF# R4822006 6.950.000 €

BEDS

10

BATHS

10.5

BUILT

659 m²

PLOT

5061 m²

TERRACE

362 m²

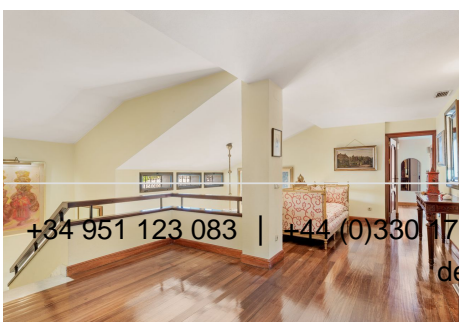
Situated in the highly exclusive and sought-after residential enclave of Guadalmina Baja, this elegant contemporary villa offers a rare opportunity to acquire a home on an exceptionally large plot, just a short walk from the beach. Positioned on one of the finest streets in this prestigious urbanisation, the property boasts immense potential, combining luxury, space, and a prime location. Guadalmina Baja is renowned for its 24-hour security and proximity to a range of high-end amenities, including top-tier schools, restaurants, and services. The villa itself is surrounded by expansive mature gardens and features a large swimming pool, creating a private oasis that offers both tranquility and space. The main residence comprises 8 bedrooms and 8 bathrooms, designed for comfort and luxury. Additional accommodations include a separate caretaker's house and a chauffeur's suite, ensuring plenty of space for both family and staff. A spacious entrance hall floods the home with natural light, and the living areas open onto a grand terrace that overlooks the garden and pool, perfect for hosting and entertaining. Highlights include a charming Andalusian-style courtyard, a gym, multiple terraces, and a garage with space for six cars. The master suite is a true retreat with its own terraces, dressing room, and en-suite bathroom, while the additional bedrooms each offer privacy with en-suite bathrooms and terraces. This unique property is a rare gem in an exceptional location, offering expansive living spaces and unmatched potential for personalisation. Don't

+34 951 123 083 | +44 (0)330 179 8687 | info@idiliqestates.com Local 28, Edificio D, Centro de Negocios Puerta de Banús, N-340, Km 175, 29660 Nueva Andlucia

IDILIQ

ESTATES

miss the opportunity to own a piece of luxury in one of Marbella's most exclusive neighborhoods, just moments from the beach.



+34 951 123 083 | +44 (0)330 179 8687 | info@idiliqestates.com Local 28, Edificio D, Centro de Negocios Puerta de Banús, N-340, Km 175, 29660 Nueva Andalucía

IDILIQ

ESTATES

