



R4821652

📍 Estepona

REF# R4821652 1.140.000 €

BEDS

4

BATHS

2

BUILT

206 m²

TERRACE

202 m²

SALE PRICE: €1,140,000. The designer furniture included is valued at approximately €90,000. Magnificent apartment in New Golden Mile, in the best residential area of Estepona! The Cataleya Phase II Residential Complex is located next to the Atalaya Golf Course, very close to Guadalmina beach and just a five-minute drive from Puerto Banús. This luxurious 206.78 m² apartment (according to deed) is distributed as follows: 113.65 m² of living space, 50.82 m² of covered terrace, 26.93 m² of open terrace, 15.38 m² of common areas, and 202.75 m² of exclusive private garden. The property features 4 bedrooms, a magnificent private terrace, and wonderful common areas where you can relax and enjoy worry-free moments with family or friends. Residential Features: The residential complex is newly built with a modern open-plan design and top-quality finishes, furnished and decorated by the prestigious interior design firm La Albaida. The apartment features an open living-dining room with an integrated kitchen. There is a fantastic private terrace accessible from the living room through double glass doors, offering an outdoor space with dining, lounge, and leisure areas, while allowing plenty of natural light to the main living space. The night area consists of three spacious double bedrooms (one with an en-suite bathroom), complemented by an elegant family bathroom and a private laundry room with a washer and dryer. The private residential complex spans over 27,000 m² of land, with impressive gardens that include two incredible pools: an outdoor pool of over 450 m²

+34 951 123 083 | +44 (0)330 179 8687 | info@idiliqestates.com Local 28, Edificio D, Centro de Negocios Puerta de Banús, N-340, Km 175, 29660 Nueva Andalucía

IDILIQ

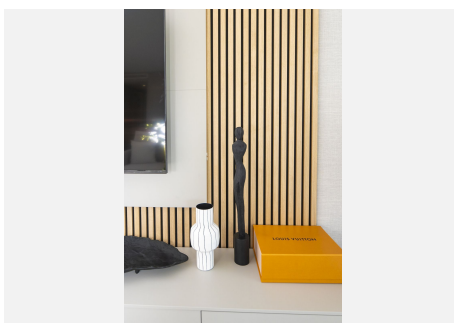
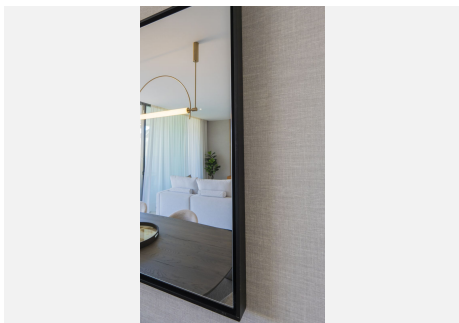
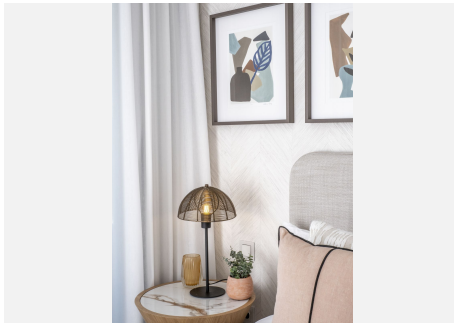
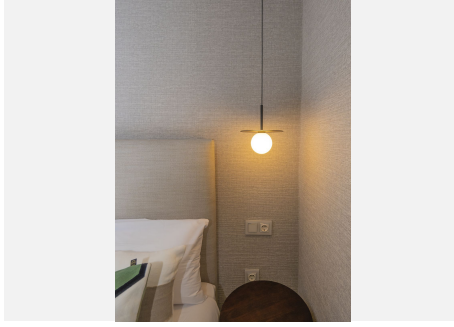
ESTATES

with two large beach-style entrances, and an indoor heated pool for year-round use. There is also security and concierge service. The complex is located just a few meters from the clubhouse and restaurant of the Atalaya Golf Course, and nearby golf courses include La Quinta, Los Arqueros, El Higueral, El Paraíso, and Villa Padierna. It is also close to supermarkets, beach clubs, restaurants, and renowned hotels offering a variety of dining options. Apartment Layout: Bedroom 1: A spacious and bright double room with built-in wardrobe and en-suite shower Bedroom 2: A peaceful double room Bedroom 3: A cozy double room with wardrobe Bedroom 4: A cozy double room with wardrobe Bathroom 1: A luxurious en-suite bathroom with walk-in shower, sink, and toilet within the master bedroom Bathroom 2: Hallway bathroom Location: Located on the Costa del Sol, in southern Andalusia, Marbella is renowned for its proximity to prestigious golf clubs and its 27 km of sandy beaches bathed by the warm Mediterranean Sea. Marbella is also famous for its high-end lifestyle, with exclusive restaurants and luxury boutiques, as well as having one of the most modern marinas, Puerto Banús. Marbella offers a wide range of fun activities during your stay, from world-renowned golf courses, sailboat and yacht rentals, to tennis clubs, water sports, family fun at the water park, tapas tours, sightseeing trips, and extreme outdoor activities.



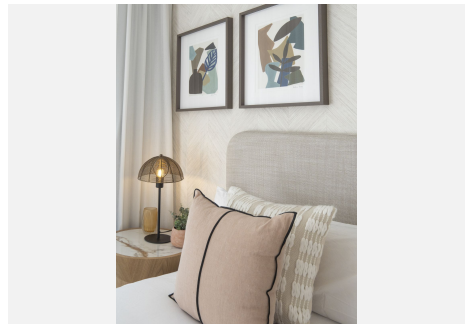
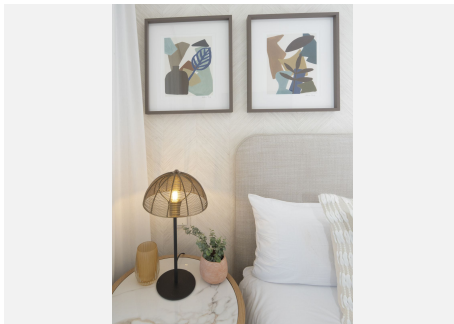
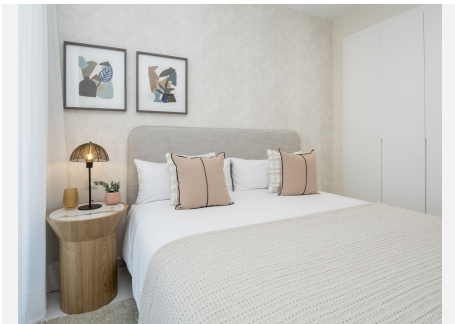
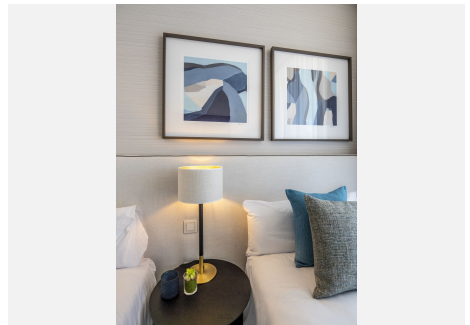
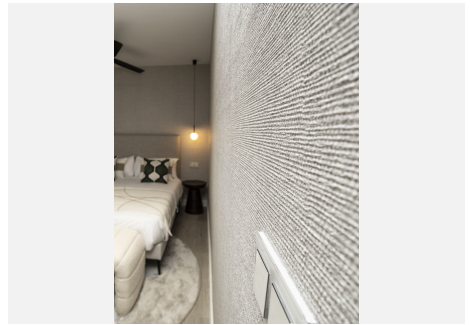
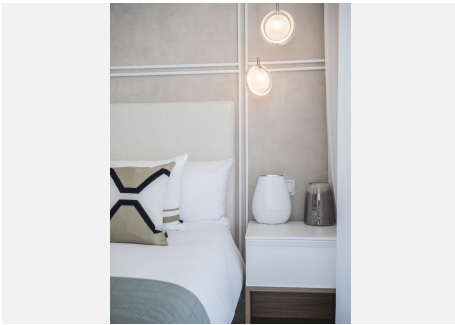
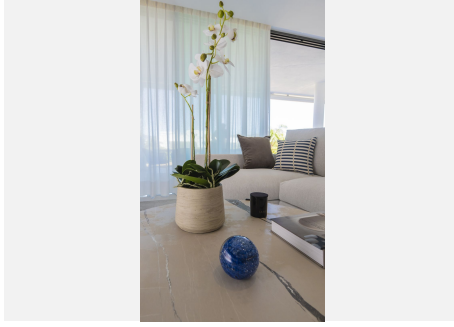
IDILIQ

ESTATES



IDILIQ

ESTATES



IDILIQ

ESTATES

