



R4820020

 Riviera del Sol

REF# R4820020 299.000 €

BEDS

2

BATHS

2

BUILT

64 m²

TERRACE

10 m²

Live the Luxury Life in this Dream Penthouse! Located on the first line of golf, in an exclusive and secure urbanization, this 2-bedroom, 2-bathroom penthouse is the perfect retreat for those seeking a life of luxury and comfort on the Costa del Sol. With a built area of 64 m² and a 10 m² terrace, this penthouse offers spacious and bright spaces, with breathtaking views of the sea, mountains, and golf course. The east and southeast orientation ensures perfect natural lighting throughout the day. The property is in excellent condition and features a range of high-quality characteristics, including air conditioning, marble floors, double glazing, and fiber optics. The kitchen is equipped with high-end appliances, and the en-suite bathroom is a true oasis of relaxation. But it's not just the interior that makes this penthouse special. The urbanization boasts a communal pool, a children's pool, a restaurant, and paddle tennis and tennis courts for those looking to stay active. And, of course, access to the golf course is direct from the urbanization. Security is also a priority in this property, with a closed complex and underground parking to ensure the tranquility of the owners. Are you ready to live the luxury life you've always dreamed of? Don't miss this opportunity to acquire this stunning penthouse in Riviera del Sol! Penthouse, Riviera del Sol, Costa del Sol. 2 Bedrooms, 2 Bathrooms, Built 64 m², Terrace 10 m². Setting : Frontline Golf, Suburban, Close To Golf, Close To Shops, Close To Sea, Urbanisation. Orientation : East, South East. Condition : Good. Pool :

+34 951 123 083 | +44 (0)330 179 8687 | info@idiliqestates.com Local 28, Edificio D, Centro de Negocios Puerta de Banús, N-340, Km 175, 29660 Nueva Andlucia

IDILIQ

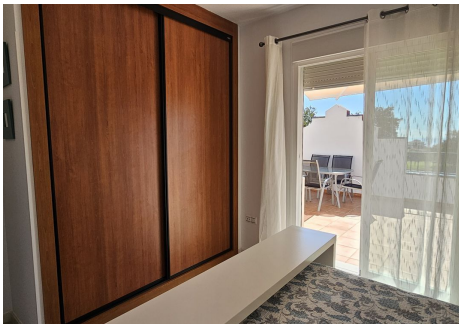
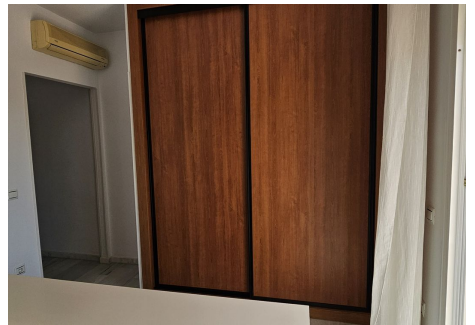
ESTATES

Communal, Children`s Pool. Climate Control : Air Conditioning, Hot A/C, Cold A/C. Views : Sea, Mountain, Golf, Country, Panoramic. Features : Lift, Fitted Wardrobes, Near Transport, Private Terrace, Paddle Tennis, Tennis Court, Ensuite Bathroom, Marble Flooring, Double Glazing, Restaurant On Site, Fiber Optic. Furniture : Part Furnished. Kitchen : Fully Fitted. Garden : Communal. Security : Gated Complex. Parking : Underground. Utilities : Electricity, Drinkable Water. Category : Bargain, Cheap, Golf, Holiday Homes, Resale.



IDILIQ

ESTATES



IDILIQ

ESTATES

