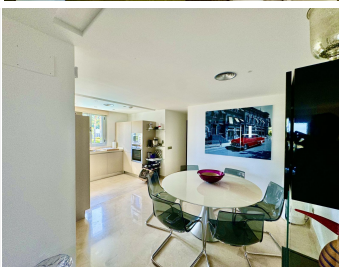
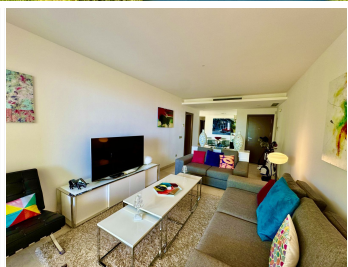
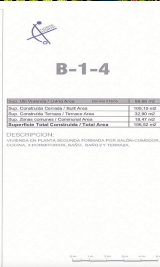
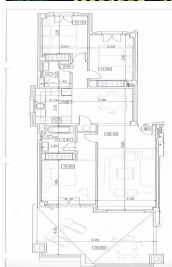


# IDILIQ

ESTATES



R4813816

📍 La Mairena

REF# R4813816 485.000 €

BEDS

3

BATHS

2

BUILT

105 m<sup>2</sup>

TERRACE

32 m<sup>2</sup>

**Location:** Soto Marbella, Spain (Near La Mairena) **Description:** This stunning 3-bedroom apartment offers the perfect blend of luxury and convenience. Enjoy breathtaking panoramic views of the sea, forest, and hills from your private 32-square-meter terrace. **Key Features:** Prime Location: Situated just 15 minutes away from the vibrant town of Marbella and the charming coastal village of La Cala de Mijas. Conveniently located 25 minutes from Malaga Airport. Free Access to Amenities: Enjoy year-round free access to the Soto Marbella 9-hole golf course, gym, spa, and clubhouse, all just 10 minutes away from the apartment. Spacious Living: With a total built area of 137 square meters, this apartment provides ample space for comfortable living. Master Suite: The master bedroom features an en-suite bathroom for added privacy and convenience. Stunning Views: Immerse yourself in the beauty of the Mediterranean with panoramic views of the sea, forest, and hills. Number of Bathrooms: 2 Kitchen Features: Modern, fully equipped Additional Amenities: Swimming pool and parking Interior Design: Furnished in a classy style

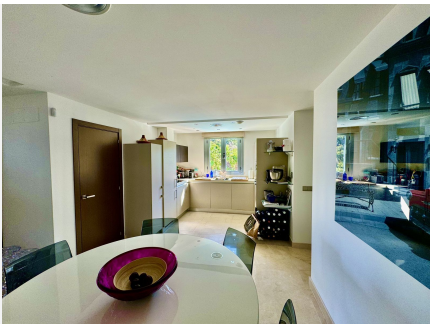
# IDILIQ

ESTATES



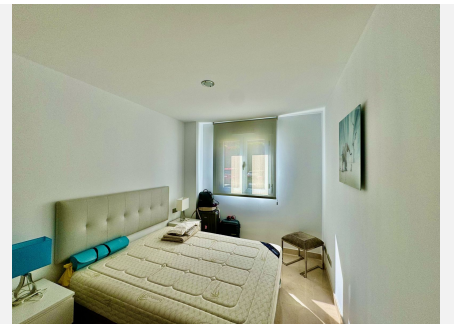
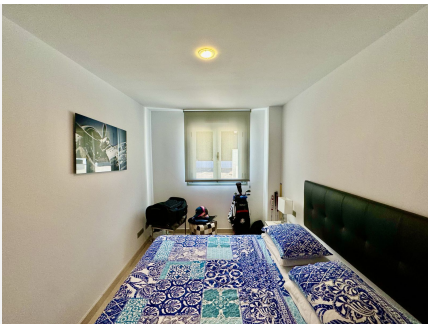
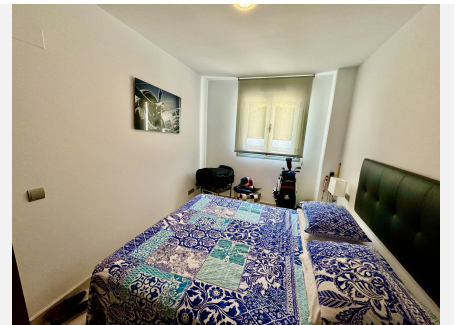
# IDILIQ

ESTATES



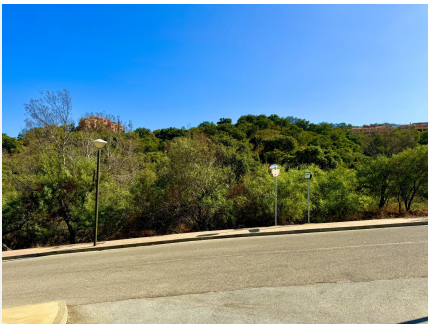
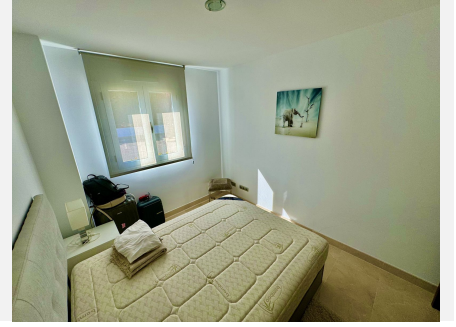
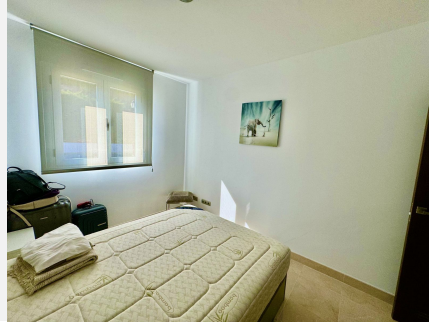
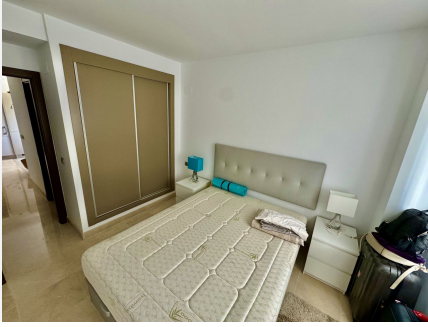
# IDILIQ

ESTATES



# IDILIQ

ESTATES



# IDILIQ

ESTATES

