

# IDILIQ

ESTATES



R4809271

📍 La Quinta

REF# R4809271 1.495.000 €

BEDS

3

BATHS

3

BUILT

168 m<sup>2</sup>

TERRACE

90 m<sup>2</sup>

Luxurious 3-Bedroom, 3-Bathroom Duplex Penthouse with Panoramic Sea Views Welcome to this exceptional duplex penthouse, superbly positioned on the prestigious frontline of La Quinta Golf Course. Set within a secure, gated community, this south-facing residence offers breath-taking panoramic sea views that greet you as soon as you step into the light and airy entrance hall. The expansive open-plan living area seamlessly blends a sophisticated lounge, elegant dining space, and a bespoke kitchen. The kitchen is the heart of the home, boasting carefully chosen Italian marble worktops that are both exquisite and functional. Every detail has been meticulously crafted, from the top-tier Siemens appliances, including a Wi-Fi-enabled touch-screen double oven, and an American-style fridge and freezer, to the marble waterfall worktops and island, beautifully complemented by custom lighting fixtures. The home has been beautifully designed by the interior designer 'Laura Virtanen'. Large bifold windows flood the space with natural light and open completely to create a seamless indoor-outdoor living experience, allowing you to enjoy the mesmerising sea views from every angle. The incorporation of lush greenery throughout enhances the tropical ambience, while A+ efficiency windows ensure both comfort and sustainability. The first floor accommodates two generously sized bedrooms, each with bespoke wardrobes and LED lighting crafted from light wood. One bedroom features an en-suite bathroom, while the other has access to a spacious shared bathroom,

+34 951 123 083 | +44 (0)330 179 8687 | [info@idiliqestates.com](mailto:info@idiliqestates.com) Local 28, Edificio D, Centro de Negocios Puerta de Banús, N-340, Km 175, 29660 Nueva Andlucia

# IDILIQ

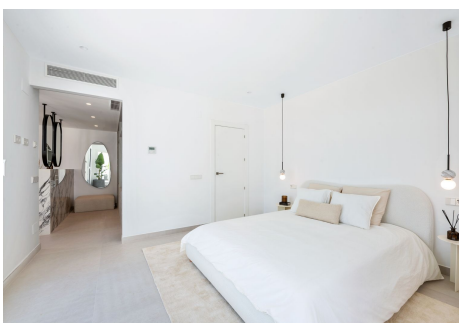
ESTATES

equipped with double sinks, a walk-in rainfall shower, and premium Roca fixtures. Underfloor heating adds an extra touch of comfort.. Ascending to the second level, you'll find the private haven of the master suite. This room offers uninterrupted panoramic sea views, visible from every corner, including the custom en-suite bathroom. Indulge in ultimate relaxation with a floating bathtub perfectly positioned in front of a picture window. The en-suite also includes his-and-hers rainfall showers, dual custom wardrobes, double floating mirror, and underfloor heating. The rooftop terrace is the crowning feature of this remarkable property. Here, you and your family can soak up the stunning sea views and enjoy sunsets over La Concha. This expansive outdoor space is designed for both relaxation and entertaining, featuring a comfortable seating area, double sunbathing spots, and an outdoor shower. A high-end BBQ and dining area make hosting friends and family a pleasure, and the terrace is pre-insulated for the addition of a jacuzzi or plunge pool. Every element of this home has been thoughtfully designed to offer a serene, minimalist aesthetic that perfectly complements the natural beauty surrounding it. Experience the ideal blend of style, comfort, and luxury in this tranquil penthouse retreat.



# IDILIQ

ESTATES



# IDILIQ

ESTATES



# IDILIQ

ESTATES

