



R4809238

📍 Casares Playa

REF# R4809238 699.000 €

BEDS

3

BATHS

2.5

BUILT

138 m²

PLOT

85 m²

TERRACE

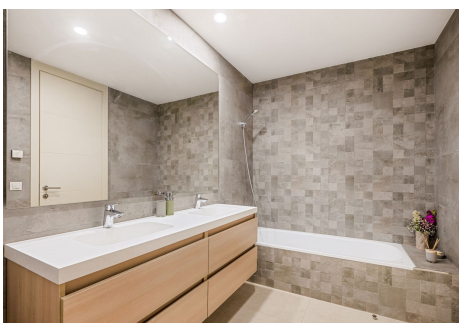
50 m²

Spacious garden apartment within the prestigious Finca Cortesin resort, offering 24 hrs security and the very best golf & hotel facilities at your doorstep. The apartment itself is a spacious ground floor corner unit boasting an open panoramic view over the golf course, sea and surrounding landscape as well as plenty of outdoor space in the form of covered and open terraces and a private garden. Upon entry, there is a spacious hall with guest WC and access to the living room with open plan kitchen. The kitchen is fully equipped with Siemens appliances and has its own access to the side terrace and private garden. The living room consists of a dining area and lounge with fireplace, further leading into a spacious covered terrace equipped with window curtains. This effectively doubles the living room space in the wintertime or doubles your outdoor terrace space in the summertime. Stepping out from the covered terrace area, either to the open terrace in front or side terrace with private garden, there is plenty of outdoor space to enjoy whether you want to enjoy the sun or rather cool down in the shade. The master bedroom with en-suite bathroom also has access to the main terrace. Furthermore, from the entrance hall we also have a guest bedroom, a bathroom with walk-in shower and a final third bedroom with access to the side terrace and garden. 2 x Underground parking spaces & a store room included Airzone climate control Underfloor heating bathrooms integrated speaker system Electric shutters on bedroom windows Alarm system

+34 951 123 083 | +44 (0)330 179 8687 | info@idiliqestates.com Local 28, Edificio D, Centro de Negocios Puerta de Banús, N-340, Km 175, 29660 Nueva Andlucia

IDILIQ

ESTATES



IDILIQ

ESTATES

