



R4802803

📍 Estepona

REF# R4802803 1.795.000 €

BEDS

3

BATHS

3

BUILT

410 m<sup>2</sup>

PLOT

600 m<sup>2</sup>

TERRACE

300 m<sup>2</sup>

We present you a spectacular luxury villa in Estepona, ideal for those who value comfort, bright spaces and sustainability. This architectural gem WITH SPECTACULAR VIEWS OF GIBRALTAR; is distributed around a double-height main volume and extends over three levels: ground floor, upper floor and basement. This home offers a sophisticated and functional design that will make you fall in love from the first moment.

On the ground floor, you will find a welcoming entrance hall, cloakroom, en-suite bedrooms with bathroom and dressing room, a dream kitchen-dining room, a spacious living room and a main porch that opens onto a magnificent outdoor skimmer pool with pre-installation for a heat pump. The upper floor houses the master bedroom with the option of converting the second bedroom into a library and a terrace to enjoy the views. The basement is presented raw, except for the machine room, offering a blank canvas to personalize to your liking.

The villa has an outdoor parking area, a porch and solarium area, as well as a garden with programmed automatic irrigation and programmed lighting. Equipped with TV/FM antenna, digital video intercom, air renewal system and air conditioning installation in the basement, every detail has been carefully thought out

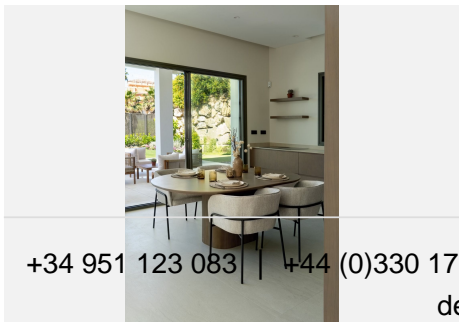
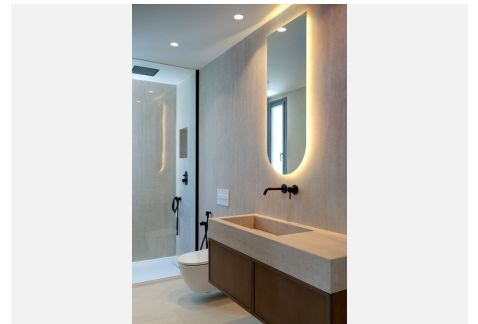
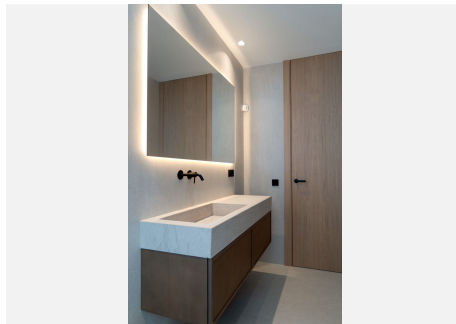
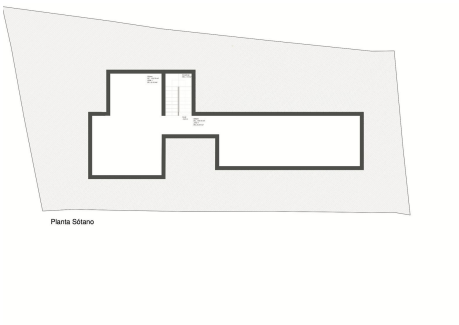
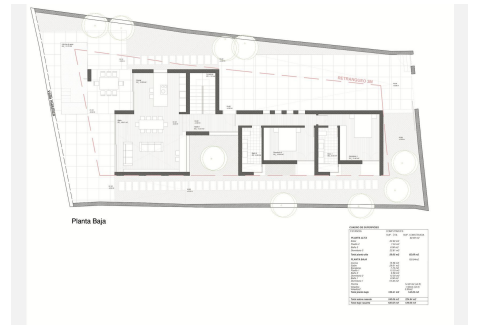
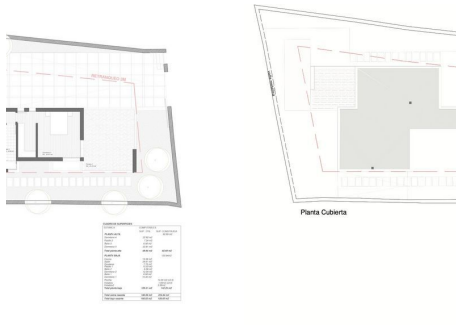
---

+34 951 123 083 | +44 (0)330 179 8687 | [info@idiliqestates.com](mailto:info@idiliqestates.com) Local 28, Edificio D, Centro de Negocios Puerta de Banús, N-340, Km 175, 29660 Nueva Andlucia

# IDILIQ

## ESTATES

for your comfort.

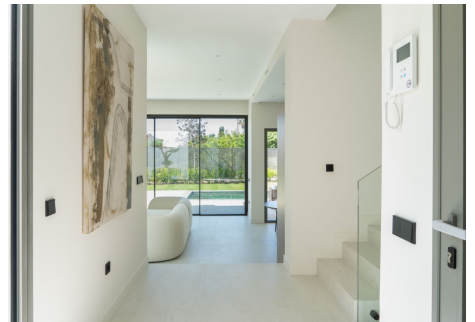
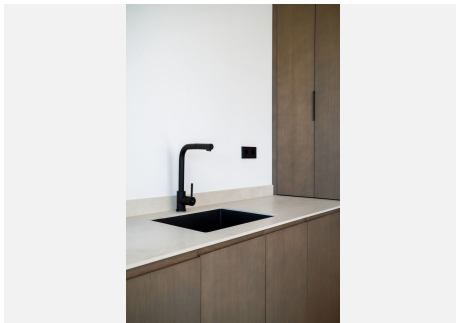
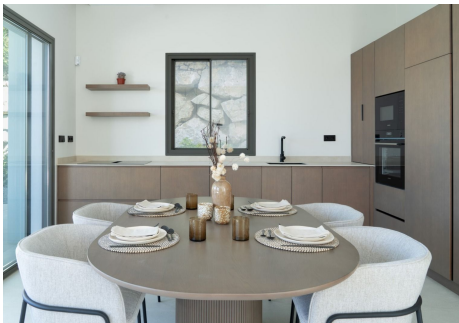
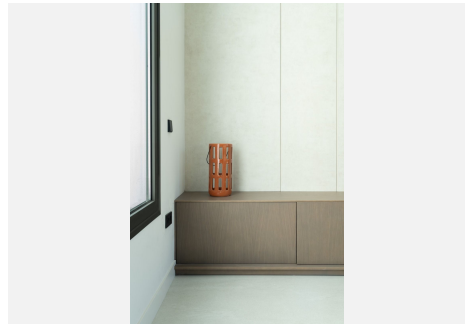
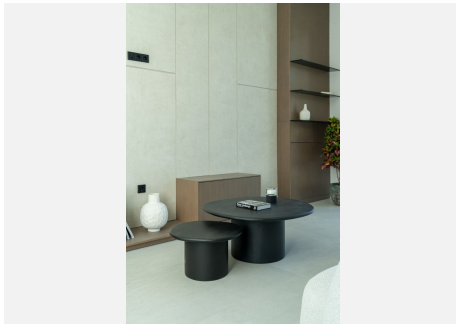
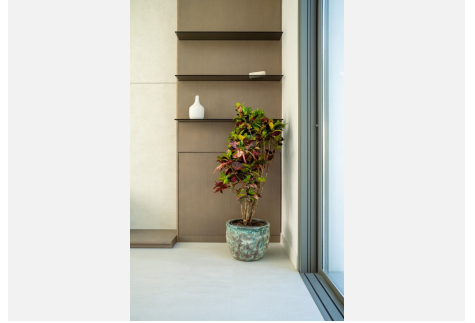
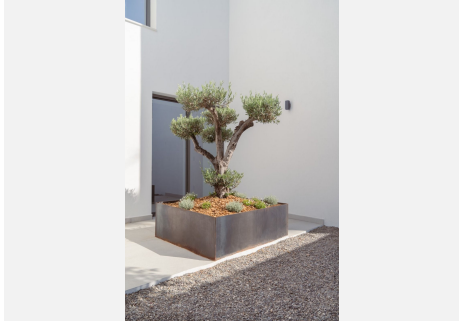
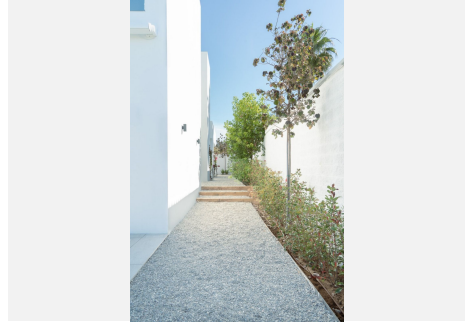


+34 951 123 083 | +44 (0)330 179 9087 | [info@idiliqstates.com](mailto:info@idiliqstates.com) | Local 28, Edificio D, Centro de Negocios Puerta de Banús, N.º 340, Km 175, 29660 Nueva Andalucía



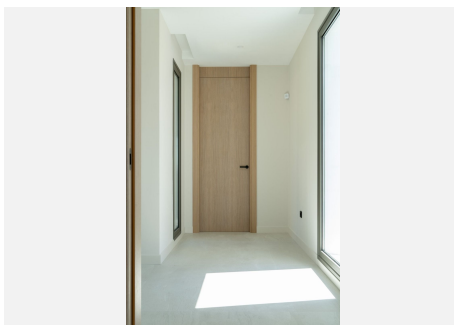
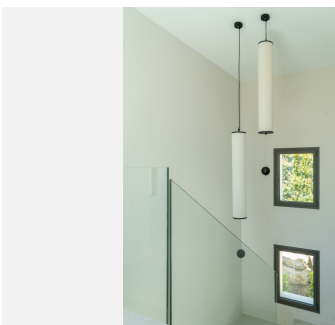
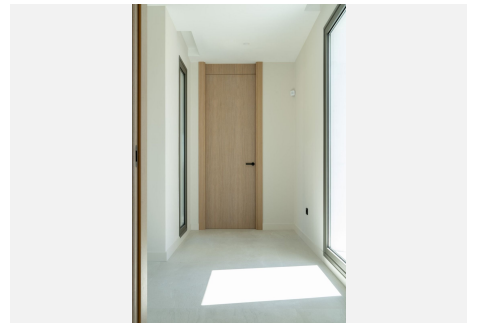
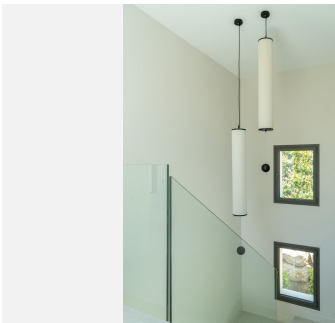
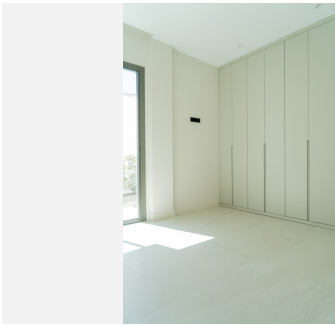
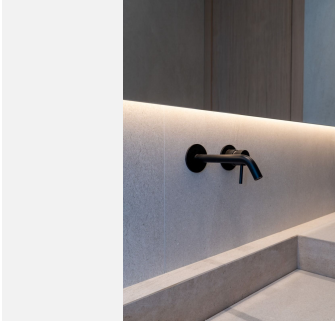
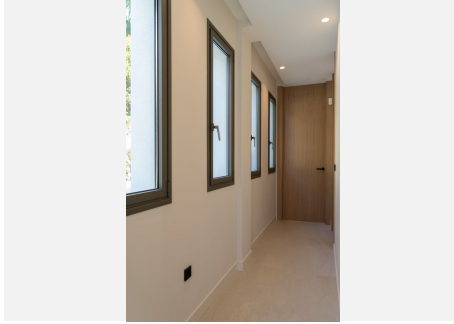
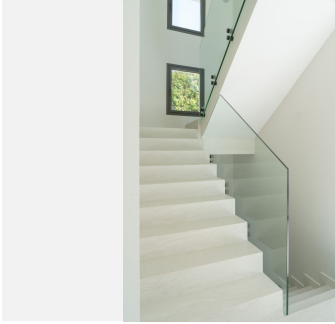
# IDILIQ

ESTATES



# IDILIQ

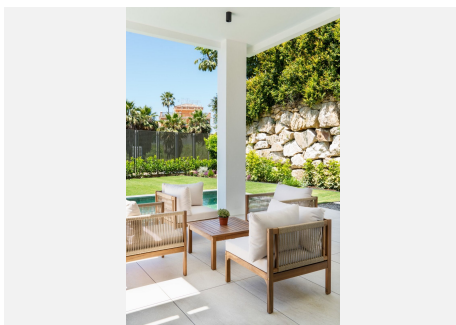
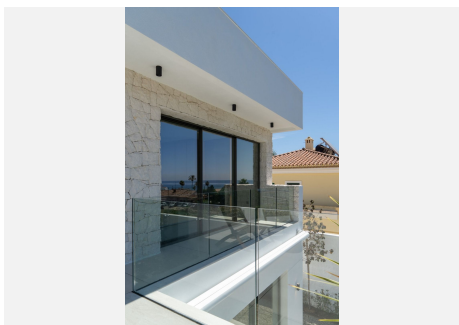
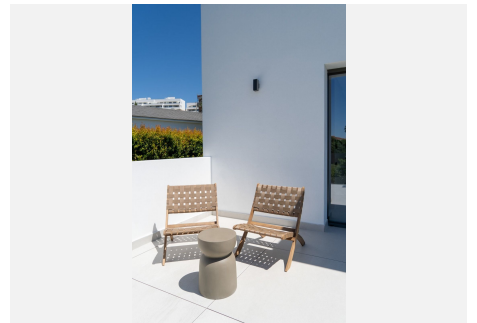
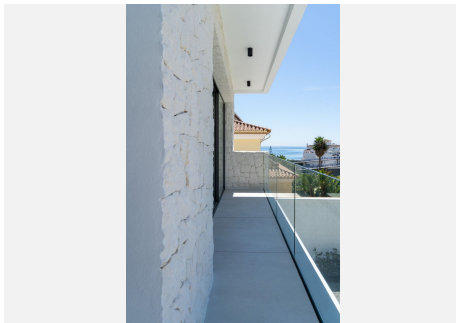
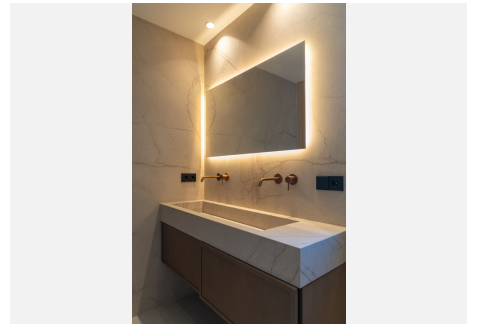
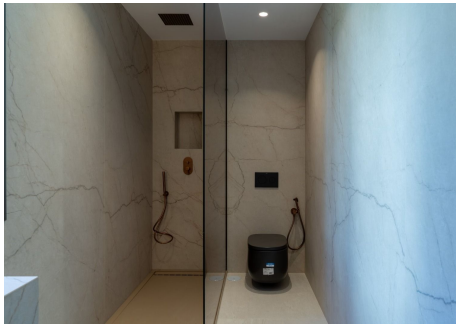
ESTATES





# IDILIQ

ESTATES



# IDILIQ

ESTATES

