



R4794292

📍 El Chaparral

REF# R4794292 695.000 €

BEDS

3

BATHS

2.5

BUILT

149 m²

PLOT

45 m²

TERRACE

25 m²

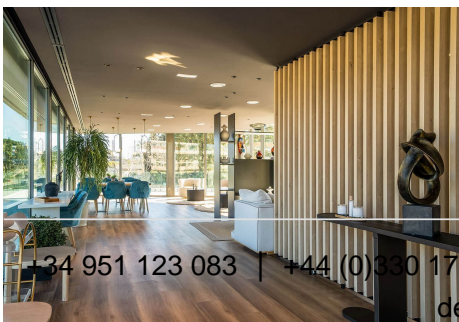
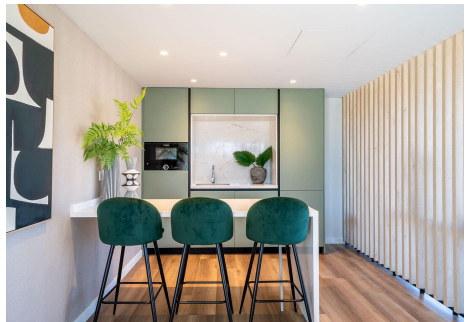
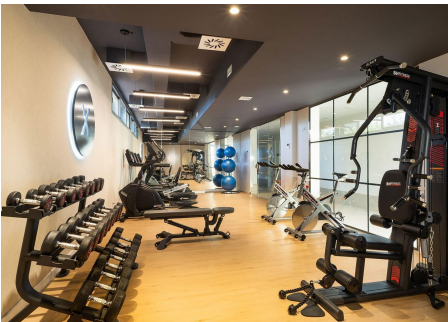
NEW delivery in 2024 - An exclusive semi-detached house with gardens in a contemporary architectural style. This luxury property offers well distributed interior spaces, on the ground floor: a separate WC and the living room, dining room and fully equipped Bosh kitchen merge into a large living space. The connection between outdoor and indoor spaces is perfect, with generous covered and uncovered terraces, the ideal place to relax and enjoy. Upstairs: 3 spacious bedrooms with fitted wardrobes and 2 bathrooms, one of which is en suite. This home has been finished to a very high standard. This exclusive resort-style complex offers everything you need to create a luxurious lifestyle with a state-of-the-art sports club offering fitness, wellness and social areas for your enjoyment. Airport: 25 min drive - La Cala de Mijas: 3 min drive - Fuengirola: 8 min drive - Puerto Banus: 25 min drive - Marbella: 20 min drive - Golf: 1 min drive - Beach: 5 min walk - Nearest bars & restaurants: 2 min walk - Shops: 3 min drive - Public transport: 4 min walk The property market on the Costa del Sol is regaining momentum and quality properties are selling faster. We recommend that if you see properties on our web page that interest you within your budget, that you contact us immediately. Our teams are constantly working to ensure that the descriptions and advertised prices of the properties on this web page are correct and up to date. However, the information contained on this web page is subject to possible errors and/or omissions and some of the properties may have changed price, or

+34 951 123 083 | +44 (0)330 179 8687 | info@idiliqestates.com Local 28, Edificio D, Centro de Negocios Puerta de Banús, N-340, Km 175, 29660 Nueva Andlucia

IDILIQ

ESTATES

been previously sold or withdrawn from sale.



+34 951 123 083 | +44 (0)330 179 8687 | info@idiliqestates.com - Local 28, Edificio D, Centro de Negocios Puerta de Banús, N-340, Km 175, 29660 Nueva Andalucía

IDILIQ

ESTATES

