

R4791616

📍 Nueva Andalucía

REF# R4791616 535.000 €

BEDS

2

BATHS

2

BUILT

110 m²

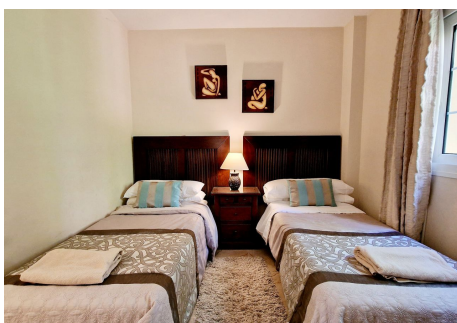
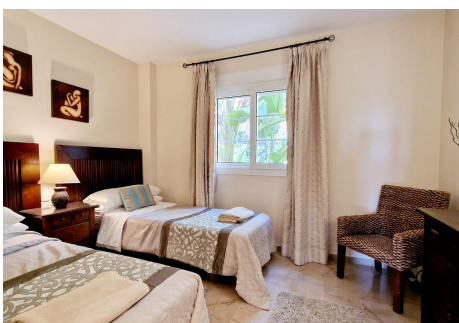
TERRACE

20 m²

NUEVA ANDALUCIA, MARBELLA, Welcome to a beautiful 2-Bedroom 2-Bathroom Spacious Apartment with Open Views near the luxurious Marina of Puerto Banus, the beach, and the Real Club de Padel Discover your dream home with this exquisite 2-bedroom, 2-bathroom apartment, perfectly situated within walking distance (15 to 20min) to the vibrant Puerto Banus, The Real Club de Padel (8min) and even the Mediterranean Sea (20 min walk). Boasting open views of the sea and mountains, this residence offers luxury and convenience. The spacious living room opens up to a large terrace, perfect for enjoying the serene surroundings. The kitchen is fully equipped and designed for culinary enthusiasts. The master bedroom features an ensuite bathroom and enjoys a west-facing orientation, ensuring plenty of afternoon sun. Located in a well-established community, residents have access to a large swimming pool and landscaped gardens for the exclusive use of its residents, Additional amenities include TWO underground parking spaces (a unique feature as very few properties boast 2 parking spaces) built-in wardrobes, and hot and cold air conditioning. Built in 2004 and in excellent condition, this elevated first-floor exterior apartment with an elevator perfectly blends modern living and convenience. With keys available for easy viewings, don't miss the chance to make this stunning apartment your new home

IDILIQ

ESTATES



IDILIQ

ESTATES

