

# IDILIQ

ESTATES



R4789012

 Puerto Banús

REF# R4789012 2.500.000 €

BEDS

2

BATHS

3

BUILT

212 m<sup>2</sup>

PLOT

47 m<sup>2</sup>

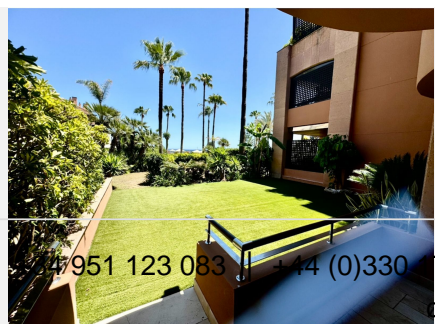
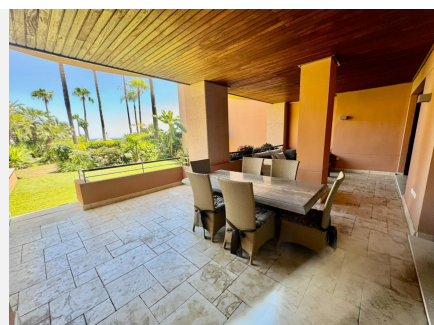
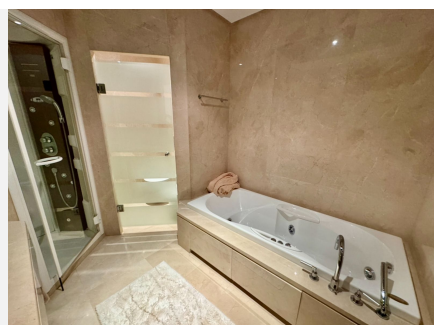
TERRACE

30 m<sup>2</sup>

Beautiful Luxury Ground floor apartment in one of the best developments on the front line of the beach with 360° panoramic views. Close to Mistral beach and Puerto Banus and just a few meters from the 5-star Guadalpin Banus hotel. The contemporary and luxuriously decorated flat is distributed by a spacious entrance hall, a fully equipped modern kitchen with a separate utility room, an elegant dining room and a spectacular living room with a double aspect and direct access to the main terrace. In addition, there are two bedrooms with en-suite bathrooms. The Malibu gated complex is located on the front line of one of the best sandy beaches in Puerto Banús and is accessed via a side entrance with a 24-hour security checkpoint or directly from the promenade. Communal areas include a large swimming pool set in a beautiful mature garden, the rest of the landscaped gardens with communal fountains and gymnasium. The underground garage is easily accessible with its two parking spaces and its access with private lift are very numerous. The complex is equipped with modern security cameras and is monitored 24 hours a day. This is undoubtedly one of the best and most luxurious flats in Marbella, right on the beach and in one of the most private and exclusive urbanisations in Puerto Banus. Communal space for co-owners 2 UNDERGROUND PARKING SPACES 1-Private lift 1 Security post at the entrance to the residence H24 !!!!! 2 OUTDOOR SWIMMING POOLS 1-Freshwater pool 1-Salt water pool 1 Table tennis room SPA 1-Sauna 2- Jacuzzis 1-

+34 951 123 083 | +44 (0)330 179 8687 | info@idiliqestates.com Local 28, Edificio D, Centro de Negocios Puerta de Banús, N-340, Km 175, 29660 Nueva Andlucia

## Hamam



# IDILIQ

ESTATES

