



R4786843

📍 Benalmadena

REF# R4786843 450.000 €

BEDS

2

BATHS

2

BUILT

78 m²

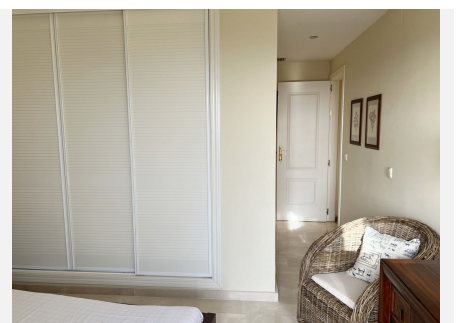
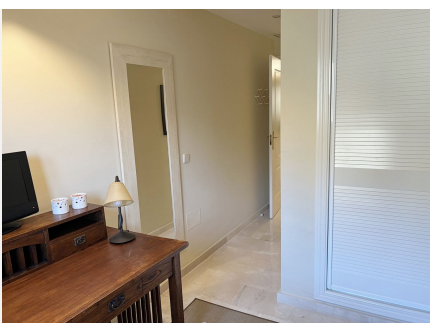
TERRACE

26 m²

Exclusive penthouse in the prestigious Finca Doña María Urbanization with spectacular panoramic views of the golf course, mountains and the sea. The property has two bedrooms and two bathrooms (1 en suite), a fully independent kitchen, a very spacious and bright living room, and a beautiful terrace with all the views. The urbanization has large communal gardens, a huge pool and a beautiful gym. The same property has three parking spaces fully included in the price. DO NOT HESITATE TO ASK US WITHOUT COMMITMENT, IT IS WORTH A VISIT!! Penthouse, Benalmadena, Costa del Sol. 2 Bedrooms, 2 Bathrooms, Built 164 m², Terrace 20 m². Setting : Frontline Golf, Close To Sea, Close To Town, Close To Schools, Urbanisation. Orientation : South. Condition : Excellent. Pool : Communal. Climate Control : Air Conditioning. Views : Sea, Mountain, Golf, Panoramic, Lake. Features : Lift, Fitted Wardrobes, Private Terrace, Satellite TV, ADSL / WIFI, Utility Room, Ensuite Bathroom, Marble Flooring, Barbeque, Staff Accommodation, Fiber Optic. Furniture : Fully Furnished. Kitchen : Fully Fitted. Garden : Communal. Security : Gated Complex. Parking : Underground, Garage, More Than One, Private. Utilities : Electricity, Drinkable Water, Telephone. Category : Luxury.

IDILIQ

ESTATES



IDILIQ

ESTATES

