



R4786606

 Nueva Andalucía

REF# R4786606 680.000 €

BEDS

2

BATHS

2

BUILT

113 m²

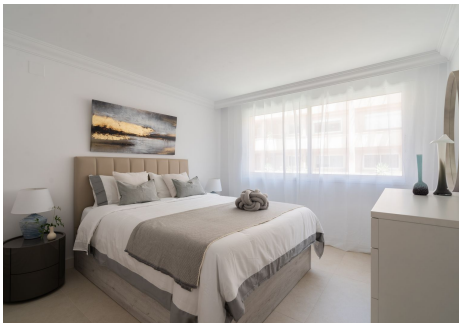
TERRACE

29 m²

Recently renovated, beautiful apartment with panoramic sea views in Magna Marbella! Welcome to this lovely 2 bedroom apartment with the most amazing panoramic views. Upon entering the apartment you have immediate views towards the sea, coastline and mountains. It has recently been renovated, consisting of a large open plan kitchen with great space and a breakfast bar, connected to the dining and living area. Direct access to the terrace facing west overlooking the pools, golf course and the sea. Further there are 2 great sized bedrooms with built in wardrobes, where the master bedroom is en suite. From the master bedroom you have access to the terrace as well. The apartment has underfloor heating through out, shutters, air conditioning and comes with 2 garages and 2 storages. Easy access from the parking with lift taking you straight to the apartment. It is settled in a high security complex with 24 hour guard, lovely gardens and several pool areas. One of the landmarks of Marbella.

IDILIQ

ESTATES



IDILIQ

ESTATES

