



R4784320

 Nueva Andalucía

REF# R4784320 430.000 €

BEDS

2

BATHS

2

BUILT

128 m²

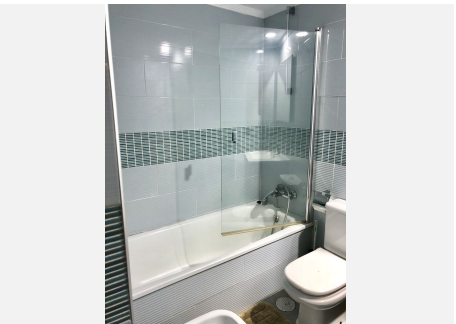
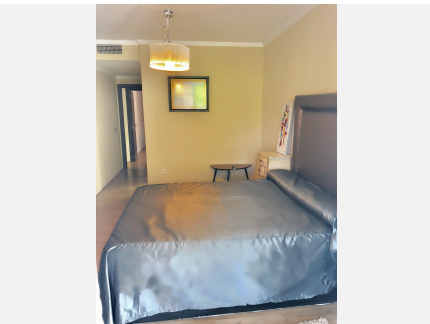
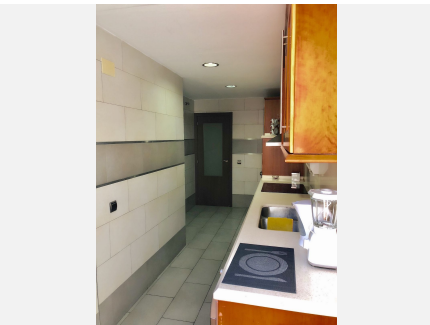
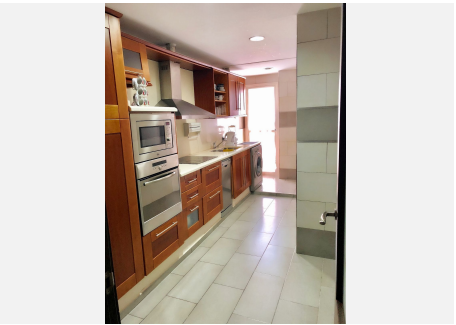
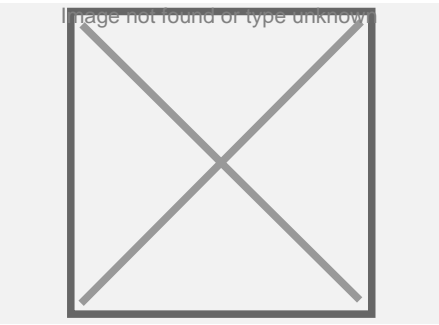
TERRACE

35 m²

Extra large ample and bright corner apartment in the sought after Lorcrimar complex. The property has two bedrooms, two bathrooms, living-dining, large kitchen and a full wrap round terrace with views to gardens as well as street. This property offers much potential as is it is corner and larger than the usual two bedroom apartments in the complex, plenty terrace space. Includes allocated garage space inside community just below the apartment. The complex has lovely swimming pools and gardens maintained to high standards. Location is superb as you can walk to gym, the beach, restaurants and even has convenient small supermarkets in the neighbourhood. Puerto Banus and the beach at a short walk of 10 minutes away. Schools both public and private less than a 5 minute drive as well as 5 golf courses in the immediate surroundings. Ideal investment opportunity for anyone looking to buy and live all year round, as a holiday home or a rental investment with good rental return. The property is rented at the moment so for viewings please give advance notice.

IDILIQ

ESTATES



IDILIQ

ESTATES

