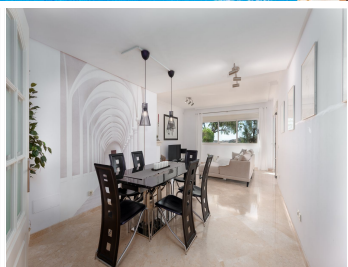
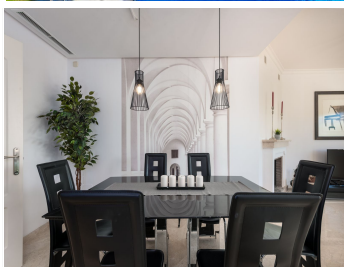


# IDILIQ

ESTATES



R4780012

📍 La Mairena

REF# R4780012 370.000 €

BEDS

2

BATHS

2

BUILT

120 m<sup>2</sup>

PLOT

100 m<sup>2</sup>

TERRACE

25 m<sup>2</sup>

Nestled in the serene and picturesque enclave of La Mairena, this stunning 2-bedroom, 2-bathroom ground floor apartment offers an unparalleled living experience. Boasting breathtaking panoramic views of both the sparkling Mediterranean Sea and the mountains, this property seamlessly blends luxury with nature. As you step into this spacious apartment, you are greeted by a light-filled open-plan living and dining area, designed for comfort and elegance. The modern renovated kitchen is fully equipped with high-end appliances and offers ample storage space, perfect for culinary enthusiasts. The master bedroom features an en-suite bathroom and direct access to the expansive terrace, where you can enjoy your morning coffee while taking in the stunning vistas. The second bedroom is equally spacious and features fitted wardrobes. Outside, the large private terrace is an ideal spot for al fresco dining, entertaining guests, or simply relaxing while surrounded by lush greenery and the natural beauty of La Mairena. Residents also have access to well-maintained communal gardens, multiple swimming pools and padel court. Additional features of this exceptional property include marble flooring, hot and cold air conditioning, private parking, and a storage room. Situated in a tranquil and exclusive community, this apartment offers the perfect blend of seclusion and convenience, with easy access to local amenities, golf courses, and the vibrant towns of Marbella and Elviria. Experience the best of coastal and mountain living in this exquisite La Mairena apartment – a true

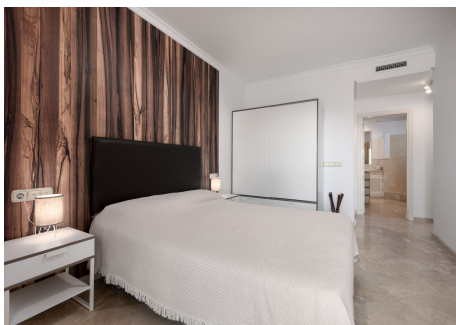
+34 951 123 083 | +44 (0)330 179 8687 | info@idiliqestates.com Local 28, Edificio D, Centro de Negocios Puerta de Banús, N-340, Km 175, 29660 Nueva Andlucia



# IDILIQ

ESTATES

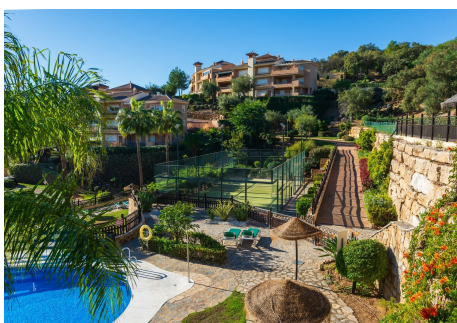
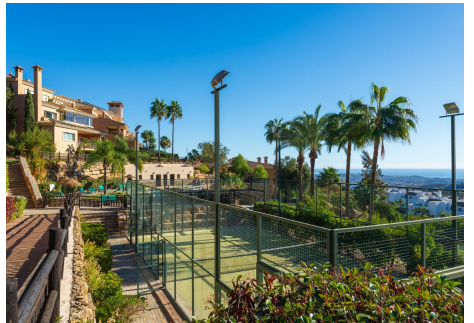
gem that offers both tranquility and luxury.





# IDILIQ

ESTATES





# IDILIQ

ESTATES

