



R4779859

📍 Nueva Andalucía

REF# R4779859 599.950 €

BEDS

4

BATHS

3

BUILT

146 m²

PLOT

40 m²

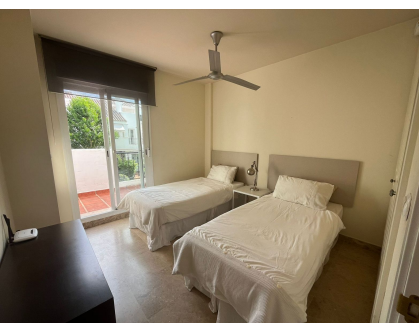
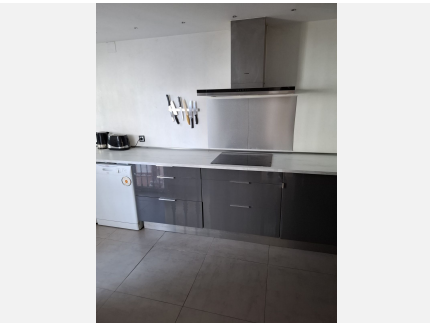
TERRACE

25 m²

Stunning property in a super location convenient for walking to Aloha College, Puerto Banus, Dama de Noche Golf, local shops and restaurants. A very popular location for families and investors. This house has 4 bedrooms spread over 3 floors and is in a very good condition with a reformed new modern kitchen. At the front of the house you will find parking for a car behind an electric gate and a front terrace. The living accommodation is open plan with a feature fireplace in the living room separating the living room and dining area both of which have doors leading onto a terrace and garden area. The garden has a gate leading out to the communal garden which leads to the communal swimming pool. The kitchen is modern and fully fitted with a window overlooking the front of the house and a door leading to the front terrace. In addition there is a guest WC on this level. Upstairs you will find the master bedroom with en suite and doors leading to a lovely terrace. There is another guest bedroom on this level with access to the terrace and a 3rd guest bedroom and a family bathroom. Up another flight of stairs you will find a large bedroom with vaulted ceilings and a shower room. There is also a terrace on this level with stunning views of La Concha Mountain. This property has the LPO and the tourist license in place.

IDILIQ

ESTATES



IDILIQ

ESTATES

