



R4774183

📍 Atalaya

REF# R4774183 1.200.000 €

BEDS

4

BATHS

3

BUILT

160 m²

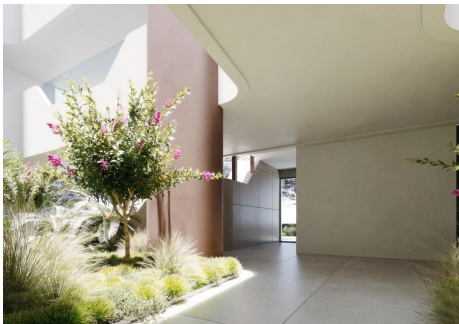
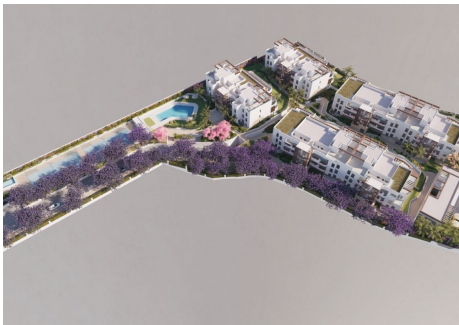
TERRACE

135 m²

penthouse duplex in a residential complex with clean, organic lines that blend in perfectly with the surrounding nature, there are common areas where every detail has been thought through, including a swimming pool, spa area, gym, changing rooms and even a co-working and common area. There is a security system and the installation of CCTV cameras and number plate recognition at the entrance to the garages. All homes are spacious and bright, with open spaces and large windows designed to maximise natural light and enjoy the beautiful views. The distribution of each room has been studied to maximise the use of space and create a comfortable and practical atmosphere. The development is located on the New Golden Mile, between Puerto Banus and Estepona, in one of the most popular areas at the moment. The project is surrounded by some of the most exclusive golf courses on the Costa del Sol, just minutes from El Saladillo beach and Playa del Sol Villacan.

IDILIQ

ESTATES



IDILIQ

ESTATES

