

IDILIQ

ESTATES



R4763809

📍 El Paraiso

REF# R4763809 3.400.000 €

BEDS

5

BATHS

5

BUILT

588 m²

PLOT

1946 m²

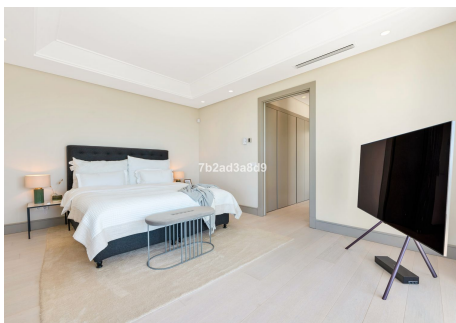
Introducing this stunning five-bedroom home featuring panoramic views of La Concha mountain and the Mediterranean Sea, stretching to Gibraltar and the African coastline on the west. Located on an elevated second-line golf plot in the exclusive community of El Paraiso in Benahavís, it's also within easy reach of the bustling centres of Marbella and Puerto Banús. This fantastic property boasts quality materials, spacious living quarters, five complete bedroom suites with floating oak floors, and incredible views throughout. On the top level, you will find the double garage and three light-filled suites, including the main bedroom featuring stunning views of the Mediterranean, a walk-through closet, and an ample ensuite with a standalone bath and separate shower. It also contains two other bedroom suites offering views of the surrounding sea and mountains and a spacious solarium with panoramic views. Downstairs, the main level houses the open-plan living quarters, framed by floor-to-ceiling windows that connect the space with stunning panoramic views of the surrounding golf and sea. Large sliding doors open to a spacious terrace featuring ideal outdoor dining for twelve above the Mediterranean. A gas fireplace, a guest toilet and fully fitted kitchen with Silestone worktops and Miele appliances complete this gorgeous living space, complemented by an outdoor laundry room leading to a little garden. On ground level, there is a saltwater swimming pool and decking area with fantastic sea views, accompanied by a guest toilet, steam room and

+34 951 123 083 | +44 (0)330 179 8687 | info@idiliqestates.com Local 28, Edificio D, Centro de Negocios Puerta de Banús, N-340, Km 175, 29660 Nueva Andlucia

IDILIQ

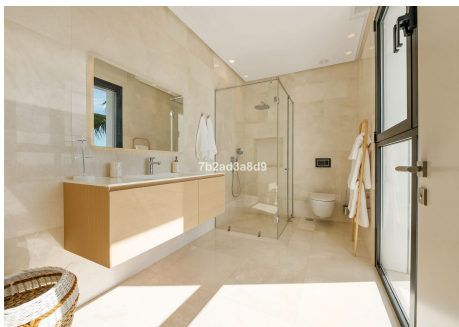
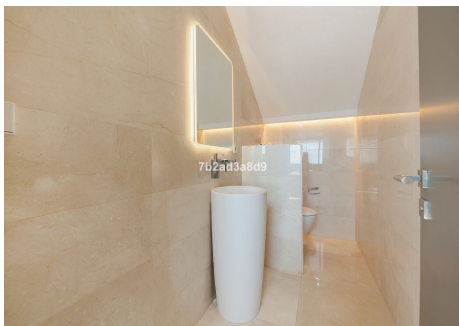
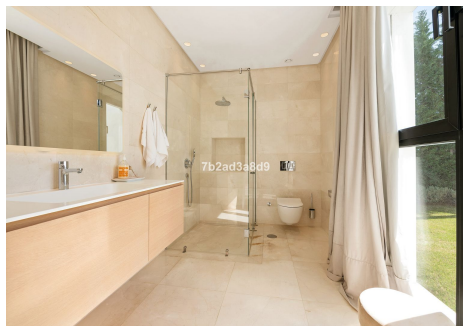
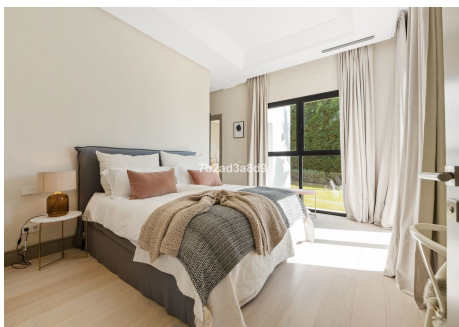
ESTATES

shower. A spacious covered outdoor kitchen, bar, entertainment and lounge area provide the ultimate summer entertainment space, including extensive fridges and cupboard space. Soak on the sun lounges, bask in the views, relax on the Bermuda grass below the mature palm trees, or explore the gardens below – this property contains a range of outdoor spaces perfect for a large family, a second home or holiday residence. This villa's modern design includes double-glazed windows, cream marble floors, dimmed lighting circuits in main rooms, pre-installation of home domotics, air conditioning and underfloor heating with independent control in each room, video entry and advanced alarm system. Complimented by a holiday rental license, parking for 3-4 cars, plus a spacious double garage and an automatic irrigation system, this property is perfect for a family or lucrative holiday rental investment. If you are searching for a quality villa near Marbella or Benahavís, that offers the ultimate Costa del Sol lifestyle in a private setting and with incredible views of the majestic La Concha mountain, golf courses and the Mediterranean Sea – look no further.



IDILIQ

ESTATES



IDILIQ

ESTATES

