

R4763404

📍 La Cala de Mijas

REF# R4763404 750.000 €

BEDS

4

BATHS

3.5

BUILT

230 m²

TERRACE

65 m²

MAGNIFICENT 4 BEDROOM PENTHOUSE WITH STUNNING PANORAMIC VIEWS FROM EVERY ROOM AND TERRACE. DISTRIBUTED OVER TWO FLOORS OFFERING ON THE LOWER FLOOR: ENTRANCE HALLWAY WITH FITTED WARDROBES, GUEST CLOAKROOM, L-SHAPED KITCHEN/DINER, HUGE OPEN PLAN DUAL ASPECT LOUNGE/DINING ROOM WITH FEATURE VAULTED DOUBLE-HEIGHT CEILING AND GALLERIED MEZZANINE, 2 DOUBLE GUEST BEDROOMS THAT SHARE A GUEST BATHROOM WITH WALK-IN SHOWER, MASTER SUITE WITH IT'S OWN DRESSING ROOM, EN-SUITE BATHROOM THAT HAS BOTH A BATH AND SEPARATE SHOWER. THERE ARE ALSO TWO GOOD SIZED TERRACES ON THIS FLOOR OFFERING GREAT VIEWS AND PLENTY OF OPTIONS FOR AL-FRESCO DINING OR RELAXING. STAIRS LEAD TO THE UPPER LEVEL WHICH IS AN EXPANSIVE OPEN PLAN SPACE WITH VAULTED CEILINGS AND A FURTHER BATHROOM WITH WALK-IN SHOWER. CURRENTLY USED AS A SEPARATE LIVING SPACE FOR GUESTS WITH A LOUNGE SPACE, OFFICE DESK AND DOUBLE BED SPACE. THE UPPER FLOOR GIVES ACCESS TO A FANTASTIC SOLARIUM WITH AMPLE ROOM FOR CHILLING OUT, ENTERTAINING AND ALSO SUNBATHING AS THE TERRACE HAS SUN FROM EARLY MORNING UNTIL SUNSET. A GREAT STORAGE ROOM HAS BEEN CREATED IN THE EAVES OF THE ROOF

+34 951 123 083 | +44 (0)330 179 8687 | info@idiliqestates.com Local 28, Edificio D, Centro de Negocios Puerta de Banús, N-340, Km 175, 29660 Nueva Andlucia

IDILIQ

ESTATES

WHICH IS IDEAL FOR STORING SUNBEDS, PARASOLS, TERRACE FURNITURE AND OUTSIDE CUSHIONS. THE PROPERTY IS PRESENTED IN IMMACULATE CONDITION AND HAS HIGH QUALITY FIXTURES AND FITTINGS THROUGHOUT. SITUATED ON THE MUCH SOUGHT AFTER GOLF GARDENS MIRAFLORES COMPLEX WHICH IS EXTREMELY WELL MAINTAINED WITH A CENTRAL POOL AND EXTENSIVE MATURE GARDENS. THE COMMUNITY IS IDEALLY LOCATED IN A QUIET CUL-DE-SAC SURROUNDED BY MIRAFLORES GOLF COURSE BOTH FRONT AND BACK BUT WITH A WIDE RANGE OF BARS, RESTAURANTS, SUPERMARKET AND PUBLIC TRANSPORT AMENITIES ALL WITHIN A 3 MINUTE WALK OF THE COMPLEX. THE NEAREST BEACH IS 10 MINUTES WALK AND LA CALA BEACH IS ABOUT 20 MINUTES WALK OR A 3 MINUTE TRIP BY CAR/TAXI. THE PENTHOUSE HAS A PARKING SPACE FOR TWO CARS AND A STORAGE ROOM. THIS SENSATIONAL PROPERTY IS QUITE UNIQUE IN DESIGN AND IS UNRIVALLED IN THE AREA FOR THE INTERIOR AND EXTERIOR SPACE IT OFFERS. IT IS THE PERFECT PLACE FOR PERMANENT LIVING OR TO ENJOY AS A LUXURY HOLIDAY HOME THAT COULD ALSO GENERATE LUCRATIVE RETURNS APPEALING TO THE HIGH-END RENTAL MARKET. THE APARTMENT REALLY NEEDS TO BE VIEWED TO APPRECIATE THE WOW FACTOR IT PROVIDES!



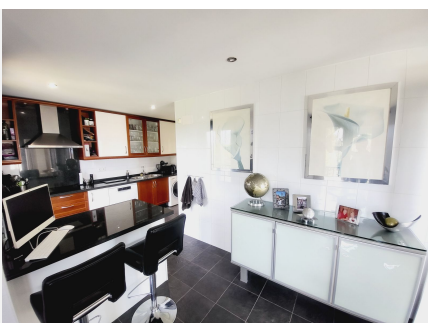
IDILIQ

ESTATES



IDILIQ

ESTATES



IDILIQ

ESTATES

