

# IDILIQ

ESTATES



R4761712

📍 Benahavís

REF# R4761712 995.000 €

BEDS

3

BATHS

2

BUILT

129 m<sup>2</sup>

TERRACE

130 m<sup>2</sup>

Stunning Atalaya Hills Penthouse with amazing open views of the Atalaya golf course, across to the Mediterranean Sea. This exquisite frontline golf penthouse with its southwest orientation in Atalaya Hills has outstanding views of the Atalaya golf course and the lake across to the Mediterranean Sea. The penthouse, a modern 3-bedroom, 2-bathroom home is bright with spacious open plan living areas and large sliding doors opening to a large adjacent covered terrace. Designed to make the best use of the natural light and warmth flowing throughout the entire apartment, bringing together interior and exterior spaces. From the living room through the non-framed glass terrace your eyes will be drawn to the spectacular panoramic views of the golf course towards the sea. The kitchen is fully fitted and equipped with a separate utility area. The master bedroom offers an en-suite bathroom and fully fitted wardrobes. Both the guest bedroom suites, of which one offers a balcony share a bathroom with walk-in shower. The second level of this outstanding property boasts a massive rooftop terrace with pergola, sundeck area, beautiful tropical plants, alfresco dining area, balcony shower and BBQ area. Providing privacy a fantastic panoramic views, it's ideal to spend warm summer evenings with friends and family. This penthouse is offered fully furnished and includes two private parkings and a storeroom in the underground garage. Atalaya Hills a modern sought after, 24-hour security gated urbanisation in the municipality of Benahavis, overlooking the two magnificent 18-hole

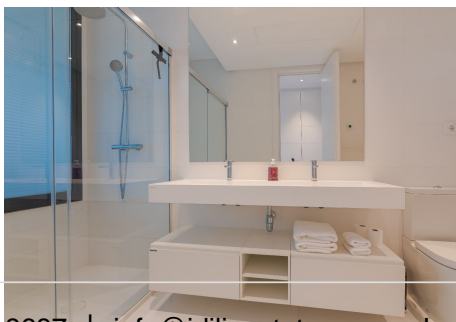
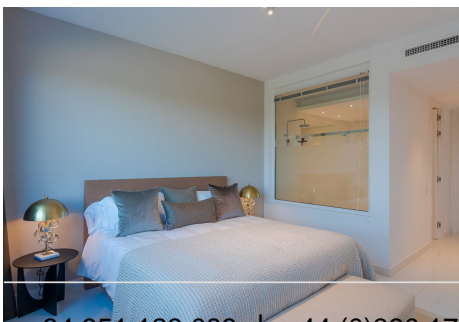
+34 951 123 083 | +44 (0)330 179 8687 | [info@idiliqestates.com](mailto:info@idiliqestates.com) Local 28, Edificio D, Centro de Negocios Puerta de Banús, N-340, Km 175, 29660 Nueva Andalucía



# IDILIQ

ESTATES

golf courses. It benefits from Mediterranean landscaped gardens with swimming pools, indoor Spa facilities, gym, large parking spaces and storerooms. At a stones through is the vibrant Guadalmina practice course with coffee lunch bar and Golf Academie. Three minutes by car we find a Mercadona and a bilingual private school. A few more minutes takes you to the beach in San Pedro, the authentic village of Benahavis, Puerto Banus, Marbella or Estepona, where you can find all amenities, restaurants and Beach Clubs for a luxury lifestyle. This is the ideal option to obtain a front line golf getaway in a prestigious area, where you can enjoy an idyllic climate in a unique setting. Do not hesitate to contact us for more information you wish on this penthouse, or to schedule a viewing and experience yourself why we love this apartment so much.





# IDILIQ

ESTATES

