



R4761232

📍 Puerto Banús

REF# R4761232 385.000 €

BEDS

2

BATHS

2

BUILT

75 m²

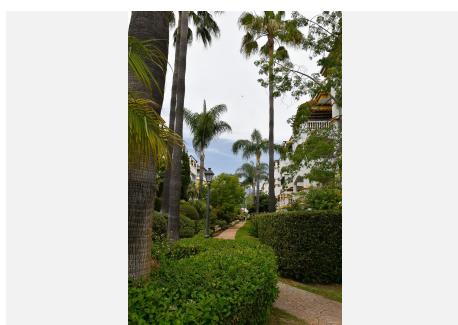
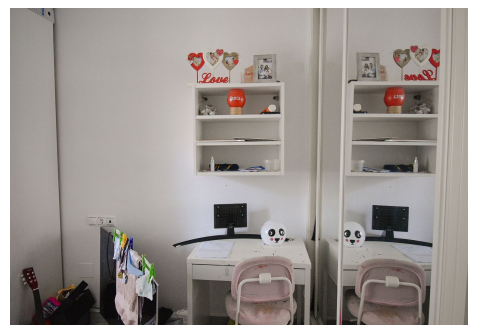
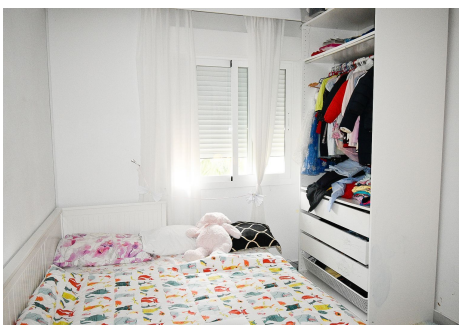
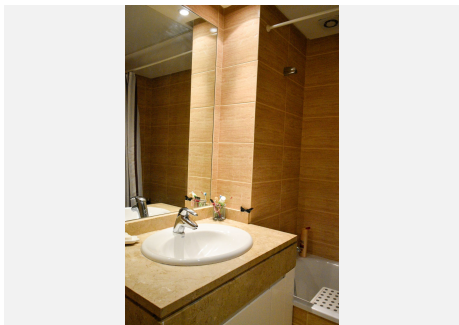
TERRACE

21 m²

Escape to your own oasis in this middle floor apartment with lots of potential. Imagine relaxing on your spacious terrace, looking out onto the gardens, with the added luxury of glass curtains to be able enjoy the views all year round. Upon entering this property you have an entrance hall which to the left leads to the bedrooms and bathrooms, directly ahead you have the kitchen and on the right handside a spacious living area. The community boasts a large communal pool and many beautiful gardens which provide the perfect setting for lazy days in the sun. The urbanisation is enclosed and security offer peace of mind. Enjoy views onto the La Concha mountain from within the community. Located close to the beach, the port, and all amenities, this is the ideal holiday apartment investment or permanent home. You won't get stuck with things to do as the surrounding area offers many options of restaurants, cafes, bars, gyms, beach clubs, cinema, shopping centres, event venues, you name it! Don't miss your chance to make this dream home yours – schedule a viewing today!

IDILIQ

ESTATES



IDILIQ

ESTATES

