

IDILIQ

ESTATES



R4754479

📍 Riviera del Sol

REF# R4754479 795.500 €

BEDS

4

BATHS

3

BUILT

186 m²

PLOT

500 m²

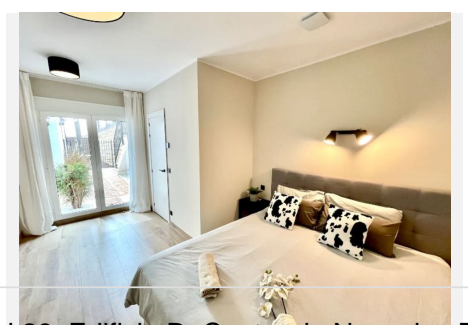
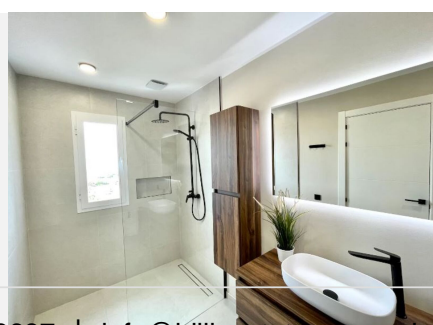
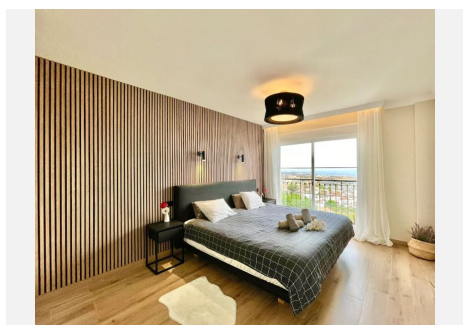
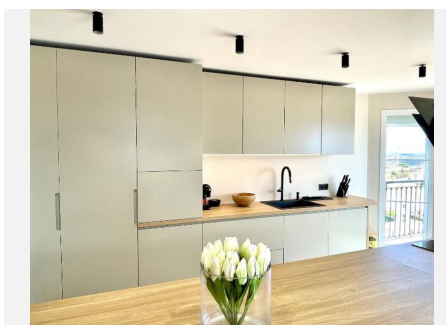
NEWLY RENOVATED SEMI DETACHED VILLA - PANORAMIC SEAVIEWS OPEN VIEWS - NO COMMUNITY FEES ! Are you looking for a turn key ready villa with a modern & classy finish? Look no further... Semi-detached house with breathtaking seaviews from every room and floors, located in the upper area of Riviera del Sol, approximately 10 minutes by car from the beach and amenities. The whole Riviera can be seen from the pool area or the balcony. Only 14 villas on this road, witch is privately used only by the owners and the guests. So it is perfect location for those who like the privacy and tranquility. Right above there is hills for those who like exploring and hiking. Good communication with AP 7, only 20 minutes to Marbella. Only 10 minutes drive to vibrant La Cala, great for shopping and dining out. This beautiful villa is completely renovated, it has under floor heating in the living room and high end finishes, it consists of a magnificent living-dining room with a fully equipped American kitchen, easy access to the terrace, 2 of the bedrooms has en-suite bathrooms on the first floor and two other bedrooms share 1 bathroom in the hallway on the lower level. All bathrooms have underfloor heating. The kitchen and the living accesses a terrace on the upper level. On the lower level is a terrace to the private pool & garden. Garage for more than one car, storage room on the garage level, good size private pool and easy to maintain garden. Great investment as a holiday rental or can be used as private home. VIEWINGS ARE HIGHLY RECOMENDED ! Semi-

+34 951 123 083 | +44 (0)330 179 8687 | info@idiliqestates.com Local 28, Edificio D, Centro de Negocios Puerta de Banús, N-340, Km 175, 29660 Nueva Andlucia

IDILIQ

ESTATES

Detached House, Riviera del Sol, Costa del Sol. 4 Bedrooms, 3 Bathrooms, Built 186 m². Setting : Close To Golf, Close To Sea, Close To Town, Close To Schools, Urbanisation. Orientation : East, South East, South. Condition : Excellent. Pool : Private. Climate Control : Air Conditioning, Hot A/C, Cold A/C, Fireplace, U/F Heating, U/F/H Bathrooms. Views : Sea, Mountain, Panoramic. Features : Covered Terrace, Fitted Wardrobes, Private Terrace, Satellite TV, WiFi, Storage Room, Utility Room, Ensuite Bathroom, Marble Flooring, Fiber Optic. Furniture : Fully Furnished. Kitchen : Fully Fitted. Garden : Private, Easy Maintenance. Security : Electric Blinds, Entry Phone, Alarm System. Parking : Garage, Covered, More Than One, Private. Utilities : Electricity. Category : Holiday Homes, Luxury, Resale.



IDILIQ

ESTATES

