



R4752184

📍 La Quinta

REF# R4752184    720.000 €

BEDS

4

BATHS

2

BUILT

160 m²

TERRACE

80 m²

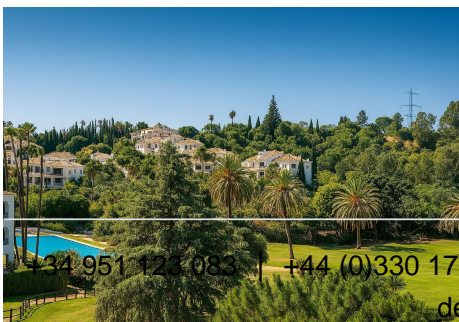
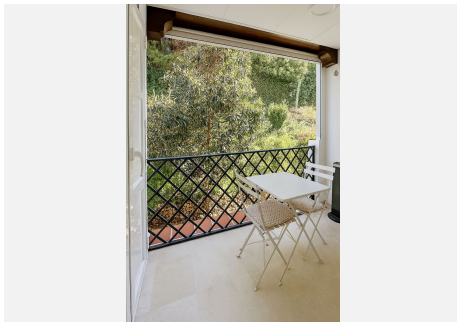
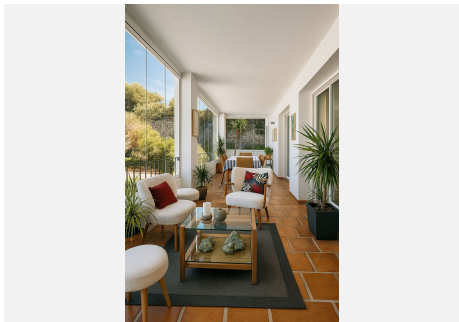
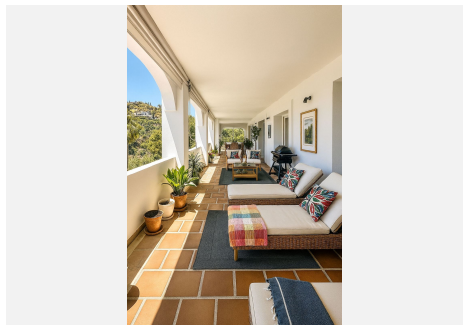
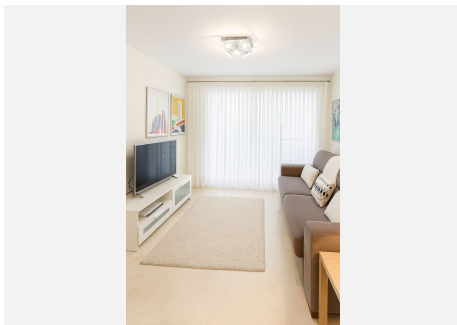
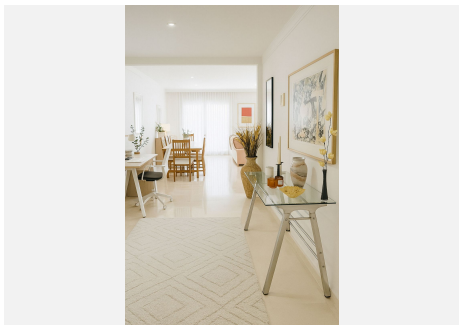
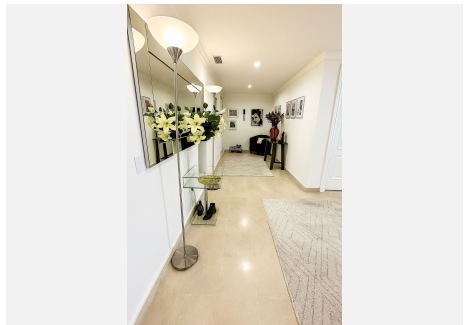
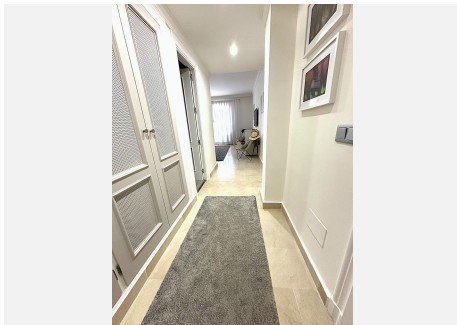
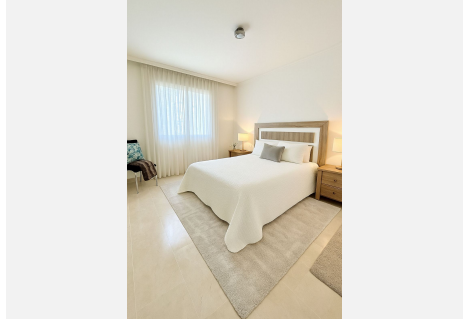
Exceptional 4 bedroom corner apartment renovated to a high standard with stunning views over the La Quinta golf course and partial sea views. The apartment is located in the prestigious area of ??La Quinta, Benahavís, in a safe and well-managed community. This property offers a rare opportunity to purchase such a spacious apartment of 237 m2 closed built area and as a corner unit 3 large terraces, one closed with glass curtains, further expanding the outside living space. The apartment is accessed by an elevator that serves two apartments on this level. , entering into a good sized reception and entrance area which leads to the spacious main living room and modern high quality fully fitted open plan kitchen and breakfast bar. The living room is surrounded on two sides with windows opening onto the two L-shaped terrace areas, ideal for entertaining and relaxing. There is a separate dining room available which has access from both terraces and is situated between both terraces, perfect for dining and entertaining The four bedrooms are large in size, all with double or single beds, and are accessed from the main living room and reception areas. The master bedroom is ensuite and the other bedrooms have access to another shower room/bathroom. It is extremely unusual for such a spacious apartment to be available in an established community that has been built to a high standard and finished with quality materials combined with modern, contemporary design and natural light (south facing). There are two good size outdoor communal swimming pools, parking and secure

+34 951 123 083 | +44 (0)330 179 8687 | [info@idiliqestates.com](mailto:info@idiliqestates.com) Local 28, Edificio D, Centro de Negocios Puerta de Banús, N-340, Km 175, 29660 Nueva Andlucia

# IDILIQ

ESTATES

entrance to the community. Highly recommended to see!





# IDILIQ

ESTATES

