

IDILIQ

ESTATES



R4749343

📍 Hacienda Las Chapas

REF# R4749343 2.950.000 €

BEDS

6

BATHS

8

BUILT

570 m²

PLOT

1740 m²

TERRACE

239 m²

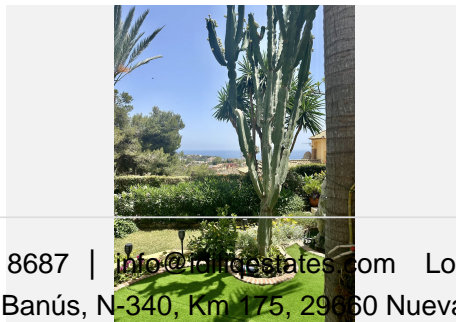
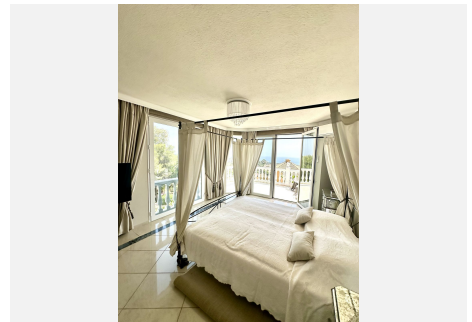
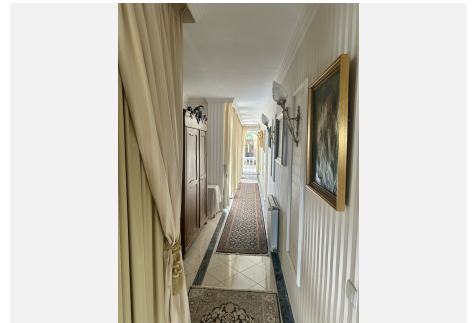
This exclusive villa also offers a spacious garden with a large swimming pool, ideal for relaxing and unwinding. The well-kept outdoor area also includes numerous palm trees and Mediterranean plants, which create an unrivalled atmosphere. The spacious terraces offer various retreats and breathtaking views of the surrounding nature. The Hacienda Las Chapas urbanisation is renowned for its security and privacy, with 24-hour security and controlled access. Thanks to its prime location, all the amenities of Marbella are within easy reach, making the property an ideal residence or a perfect holiday home. In addition to the luxurious living spaces, Villa La Fontaine offers modern amenities such as air conditioning, underfloor heating and high-speed internet to ensure maximum comfort. A spacious garage and additional parking spaces on the property round off the offer. Enjoy the best of both worlds - the peace and serenity of a private oasis and the proximity to all that Marbella has to offer. Villa La Fontaine is a truly unique gem in one of the most sought-after locations on the Costa del Sol. Key facts: - Absolute privacy, tranquillity - Sweeping views of the sea, mountains and garden - Heated outdoor pool - Various seating options by the pool - Rustic terrace with fire barbecue and pizza oven - 2 further dining terraces, one with fire barbecue - 4 double bedrooms, 4 bathrooms en suite - 2 separate flats with lounge, kitchen and bathrooms - Air conditioning/heating in all bedrooms and living rooms - Fireplace in the living room - Two fully equipped kitchens - Laundry room with

+34 951 123 083 | +44 (0)330 179 8687 | info@idiliqestates.com Local 28, Edificio D, Centro de Negocios Puerta de Banús, N-340, Km 175, 29660 Nueva Andlucia

IDILIQ

ESTATES

washing machine and tumble dryer. - 3 separate entrances



IDILIQ

ESTATES

