

IDILIQ

ESTATES



R4745782

📍 Marbesa

REF# R4745782 2.150.000 €

BEDS

6

BATHS

5

BUILT

450 m²

PLOT

895 m²

TERRACE

200 m²

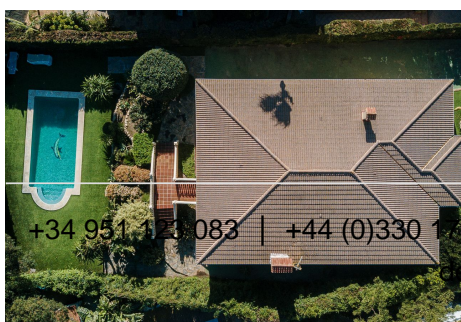
¡Discover your oasis in Marbella! This stunning villa, located in one of the city's most exclusive areas, offers you an unparalleled experience of luxury and comfort. With an 895 m² plot situated next to the beautiful Dunas de Artola, this home gives you the opportunity to live just a few meters from the beach, surrounded by nature and tranquility. The house, spread over two floors, features exquisite design and spacious areas for the whole family. On the first floor, an elegant foyer welcomes you to 3 double bedrooms and 2 full bathrooms, one of them en suite. The impressive living-dining room, with direct access to a spectacular porch overlooking the dunes, invites you to relax and enjoy unforgettable moments. To the right of the living room, a fully equipped independent kitchen with a large pantry ensures convenience for your gatherings and celebrations. From the porch on the first floor, you can directly access the pool and the barbecue area, equipped with its own independent bathroom. This special corner will become the favorite place to enjoy with family and friends. The ground floor features an additional spacious living room and 3 more double bedrooms, all with access to 2 full bathrooms, one of them en suite. Additionally, the house has an independent vehicle entrance leading to a covered garage with space for 2 cars, providing all the comfort you need. Don't miss the opportunity to make this villa your new home in Marbella. Contact us for more information and to schedule a visit! In compliance with the Junta de Andalucía Decree 218/2005 of October

+34 951 123 083 | +44 (0)330 179 8687 | info@idiliqestates.com Local 28, Edificio D, Centro de Negocios Puerta de Banús, N-340, Km 175, 29660 Nueva Andalucía

IDILIQ

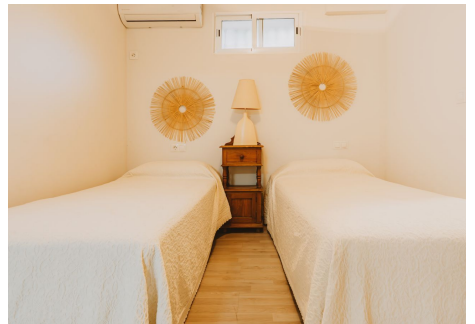
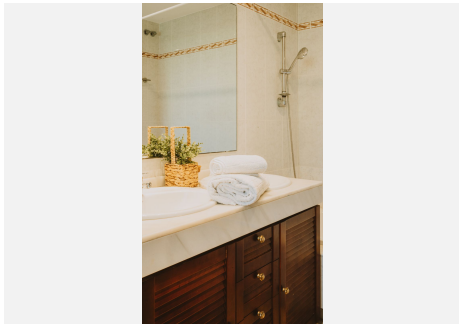
ESTATES

11, the offered price does not include the expenses derived from the purchase of the property (ITP, notary fees, registration, management, and other expenses inherent to the purchase).



IDILIQ

ESTATES



IDILIQ

ESTATES

