



R4743682

📍 Estepona

REF# R4743682 250.000 €

BEDS

2

BATHS

2

BUILT

79 m²

PLOT

50 m²

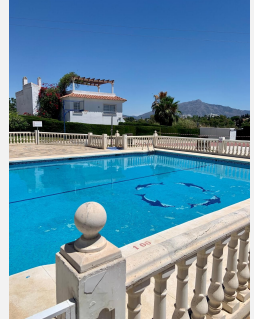
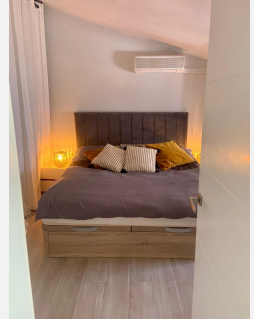
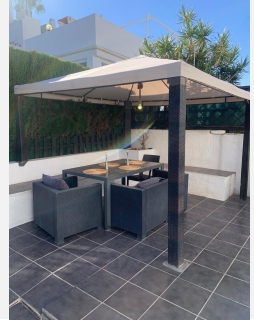
TERRACE

50 m²

Beautiful townhouse in the Monte Biarritz area next to Diana Park with a big private yard in a wonderful urbanisation with a big community pool and garden. The entry yard has a barbecue and place enough for a big dining table for a whole family and storage for surf boats, golf equipment etc. You enter in the groundfloor in a spacious refurbished living room with an open kitchen very modernised and colourful. At the ground floor you have one bathroom, a storage and the living room with the kitchen and going upstairs you have the main double bedroom, one bathroom and the other single bedroom and all with a very charming attic walls making it feel very cozy. You will have 1 parking place with the townhouse. The area is very popular as you are at a walking distance to all amenities, shops and restaurants of Diana Park and even you could cross the highway walking to the beach of Isdabe./Atalaya, or you drive there within 5 minutes to the beach of Saladillo at 2 km or to the beach of San Pedro Alcántara with excellent restaurants on the promenade and walking distance to Puerto Banús. You would drive 25 minutes to Marbella, 5 minutes to Puerto Banús and 1 hour more or less to the airport of Málaga.

IDILIQ

ESTATES



IDILIQ

ESTATES

