

R4743664

 Guadalmina Baja

REF# R4743664 3.750.000 €

BEDS

6

BATHS

5.5

BUILT

450 m²

PLOT

2000 m²

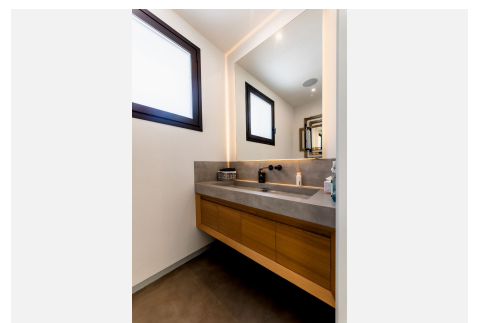
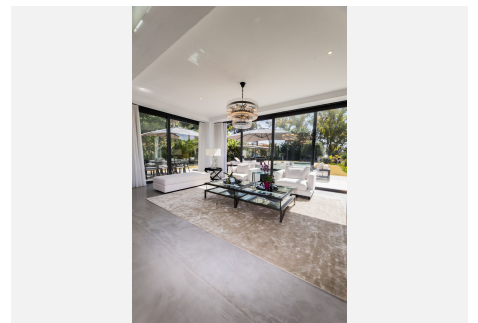
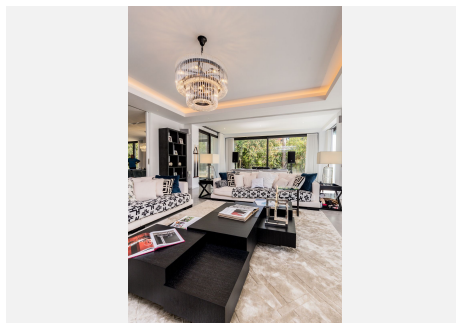
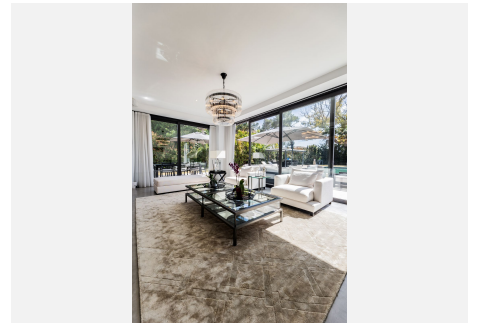
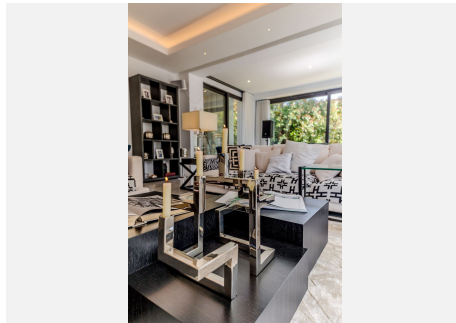
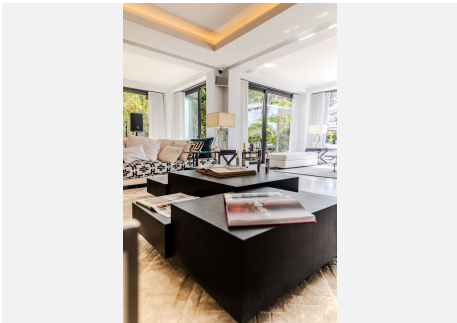
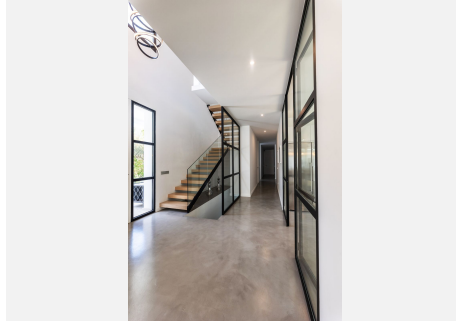
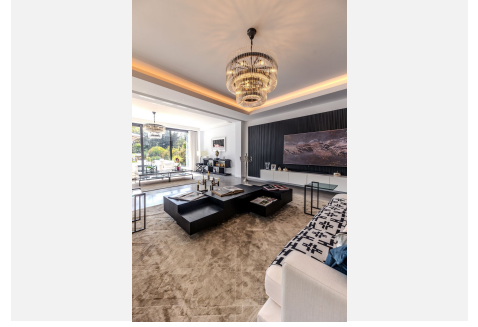
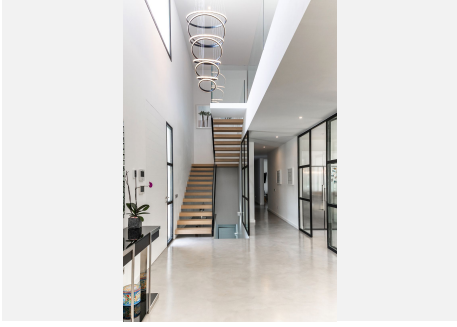
TERRACE

102 m²

This magnificent contemporary-style villa, located in Guadalmina Baja and just 300 meters from the beach, is ideal for a large family. Built with top-quality materials, it enjoys abundant natural light in every corner. The flooring throughout the villa is microcement, adding to the modern aesthetic. Upon entering through a majestic wooden door, you are welcomed into a double-height hall. From here, you immediately see a spectacular kitchen featuring a large island. Adjacent to the kitchen are the dining room and the spacious living room, both with large sliding doors that open directly onto the terrace. The terrace offers two distinct areas: a summer dining room and an outdoor living room, both with beautiful views of the garden, pool, and bar. The main floor also includes two bedrooms sharing a bathroom, another bedroom with an ensuite bathroom, a guest toilet, a laundry room, and a double garage. Ascending the floating wooden stairs to the upper floor, you will find the expansive master bedroom, which includes a dressing room and a very spacious bathroom with direct access to the terrace/solarium. Additionally, this floor has two more bedrooms, each with an ensuite bathroom and a private terrace. The basement offers several rooms and includes another large garage, providing ample space for various needs.

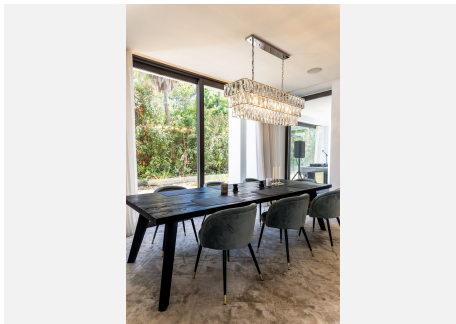
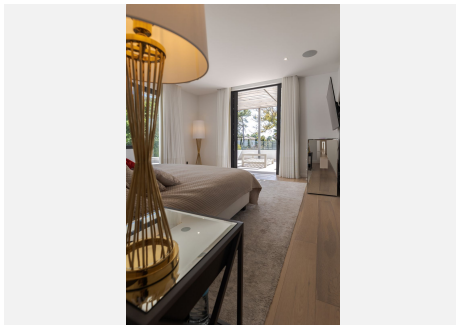
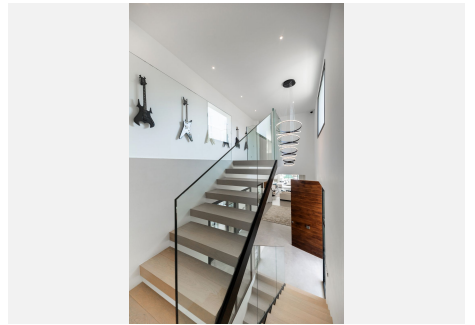
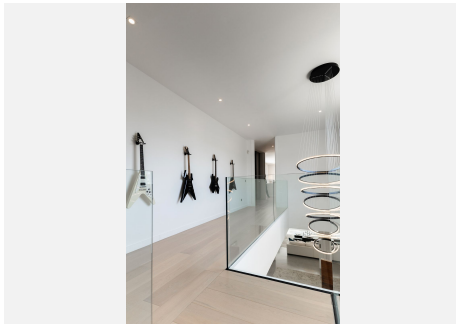
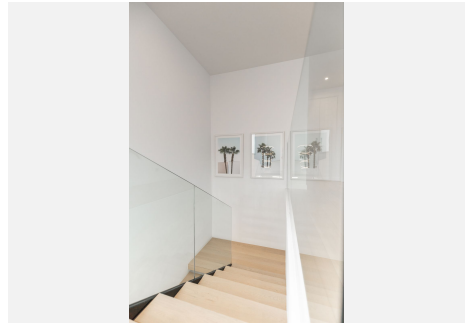
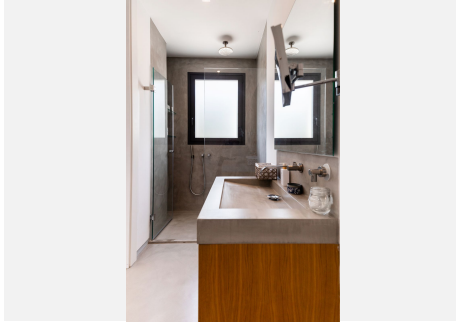
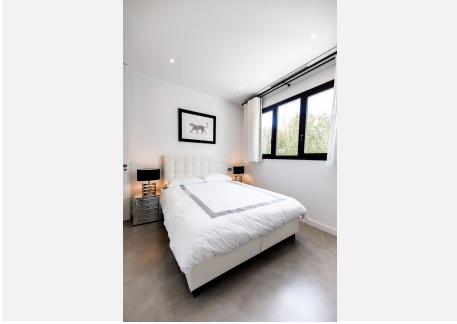
IDILIQ

ESTATES



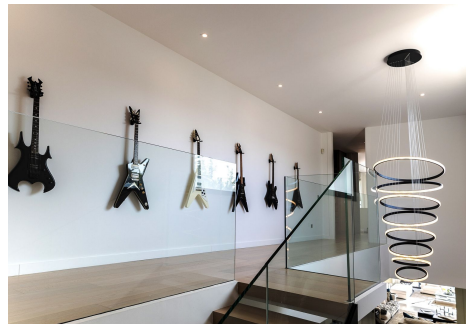
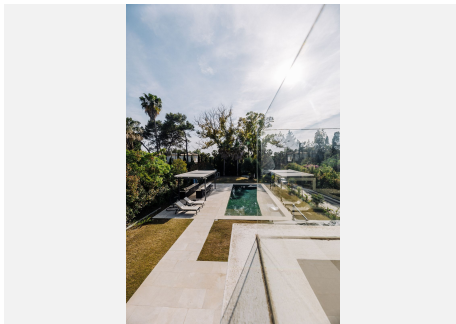
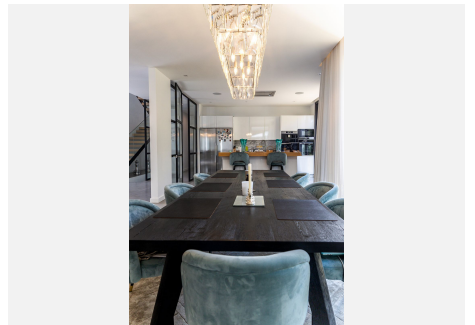
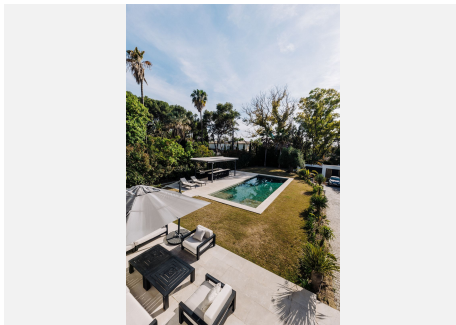
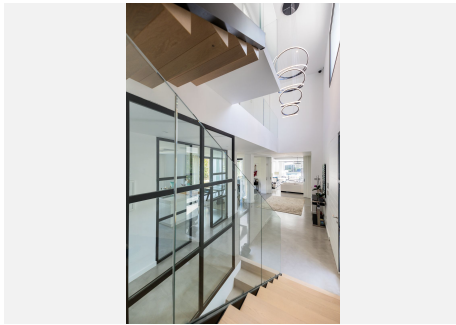
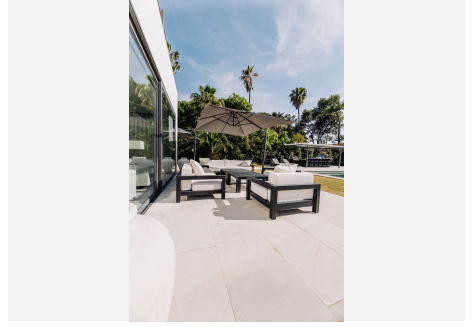
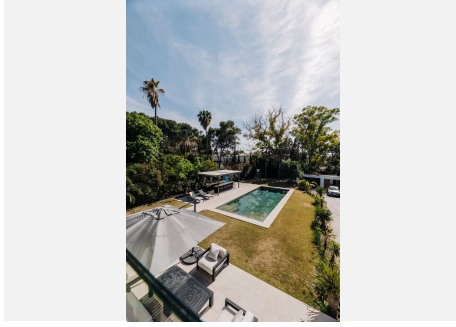
IDILIQ

ESTATES



IDILIQ

ESTATES



IDILIQ

ESTATES

