



R4740724

 Benahavís

REF# R4740724 275.000 €

BEDS

1

BATHS

1

BUILT

98 m²

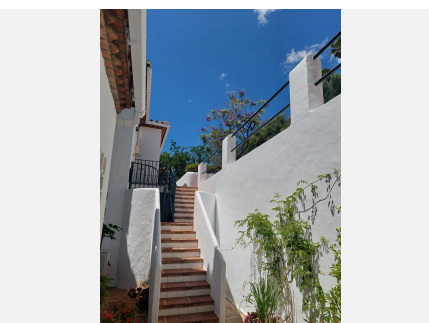
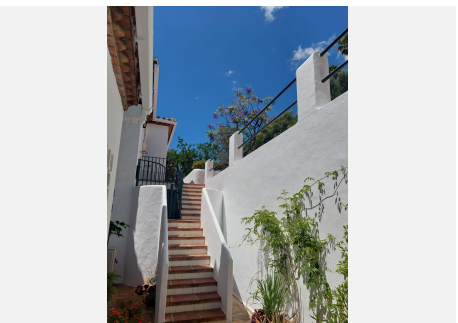
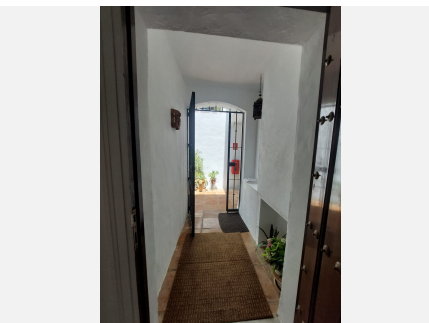
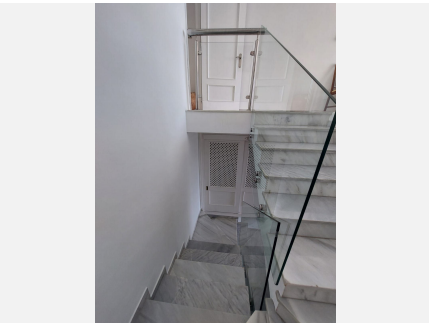
TERRACE

16 m²

This large light and airy duplex apartment is the perfect property if you want a peaceful and tranquil place 'to be' with spectacular panoramic views from both floors! As you enter the traditional Andalusia style door, it takes you to the floor with a spacious lounge with amazing spectacular views over the forest of trees down to the sea. A very comfortable sized room with doors opening out to the upper terrace, offering spectacular views, for sunrises and sunsets all year round.. It also has a wood burning fire with chimney, for cosy winter evenings. Ample space for the dining area. The kitchen has been enlarged so easily has been able to house all the kitchen appliances and washing machine.. Designed to have the bedroom downstairs, there is an open staircase which takes you down to the lower level, with its own adjacent bathroom . Again, the views are spectacular, down to the sea. Large wardrobes have been built for lots of hanging space, and linen storage. A small storage cupboard is housed under the stairs. This urbanisation has just 79 properties and has a private Club House which is situated by the beautiful tranquil pool and gardens, where residents may entertain their guests or use the facilities for their own use. The perfect full time home or holiday retreat, in a privileged area of Benahavis, for either a discerning couple or single person seeking the peaceful 'home from home'.

IDILIQ

ESTATES



IDILIQ

ESTATES

