



R4731976

📍 Manilva

REF# R4731976 329.900 €

BEDS

3

BATHS

2

BUILT

211 m²

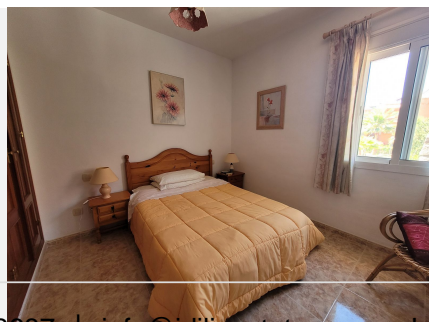
BEAUTIFUL 3 BED TOWNHOUSE WITH AMAZING VIEWS IN PRINCESA KRISTINA!!! Indulge in the allure of Spanish village living with this exceptional 3-bedroom townhouse in the enchanting Princesa Kristina complex. this excellent corner unit offers breathtaking southeast views of the sea and the picturesque coast of Estepona. As you step onto the property, a lovely and spacious terrace welcomes you, providing a perfect spot to enjoy the sea views and the vibrant surroundings. The first floor boasts a large sitting room, a well-appointed kitchen, and a private outside space. Ascend to the second floor to discover two bedrooms, with a shared terrace, and a shared bathroom. The master bedroom, a true retreat, features an ensuite bathroom and a private terrace with captivating sea views. The third floor elevates your experience with two additional terraces offering panoramic views of the azure waters. The basement unfolds into a versatile space, currently utilized for storage, a music room. A generous area that can easily be transformed into cinema room, play room, etc.... For added convenience, private exterior parking is included, complementing the underground garage space. Strategically located, this townhouse is a mere 20-minute walk from the beach (or a quick 4-minute drive) and is in close proximity to several golf courses. A short 5-minute drive takes you to the vibrant Duquesa Port and the charming village of Sabinillas. Whether you're seeking a perfect holiday retreat or a permanent residence, this meticulously designed townhouse in

+34 951 123 083 | +44 (0)330 179 8687 | info@idiliqestates.com Local 28, Edificio D, Centro de Negocios Puerta de Banús, N-340, Km 175, 29660 Nueva Andlucia

IDILIQ

ESTATES

Princesa Kristina is poised to fulfill your dreams of coastal living. Seize the opportunity to make this your haven, where charm, views, and spacious luxury converge seamlessly. Townhouse, Manilva, Costa del Sol. 3 Bedrooms, 2 Bathrooms, Built 211 m². Setting : Close To Shops, Close To Town. Orientation : East, South East, South. Condition : Good, Fair. Pool : Communal. Climate Control : Air Conditioning, Hot A/C, Cold A/C. Views : Sea, Mountain, Beach, Country. Features : Covered Terrace, Private Terrace, Storage Room, Ensuite Bathroom, Basement. Furniture : Fully Furnished. Kitchen : Fully Fitted. Garden : Communal. Parking : Underground, Garage, Open, More Than One, Private. Utilities : Electricity, Drinkable Water. Category : Bargain, Cheap, Holiday Homes, Investment, Resale.



IDILIQ

ESTATES

