



R4730443

📍 Manilva

REF# R4730443 485.000 €

BEDS

3

BATHS

2

BUILT

210 m²

PLOT

1171 m²

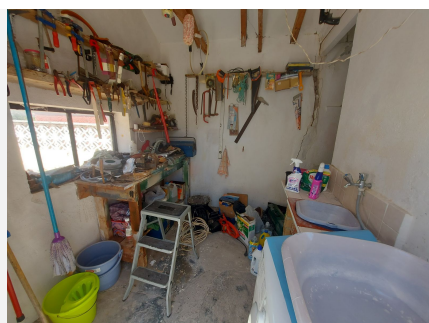
TERRACE

51 m²

Elevated south facing villa with stunning views to Gibraltar. Needs renovation: this villa needs a large reform project. Detached Villa, Manilva, Costa del Sol. 2 Bedrooms, 2 Bathrooms, Built 210 m², Terrace 51 m², Garden/Plot 1171 m². Setting : Urbanisation. Orientation : South. Condition : Renovation Required, Recently Renovated, Restoration Required. Pool : Room For Pool. Climate Control : Fireplace. Views : Sea, Garden. Features : Covered Terrace, Fitted Wardrobes, Near Transport, Private Terrace, Storage Room, Utility Room, Ensuite Bathroom. Furniture : Not Furnished. Kitchen : Fully Fitted. Garden : Private. Security : Gated Complex. Parking : Covered. Utilities : Electricity, Drinkable Water. Category : Investment, Reduced, Resale.

IDILIQ

ESTATES



IDILIQ

ESTATES

