

IDILIQ

ESTATES



R4725511

📍 Estepona

REF# R4725511 790.000 €

BEDS

3

BATHS

3

BUILT

164 m²

TERRACE

40 m²

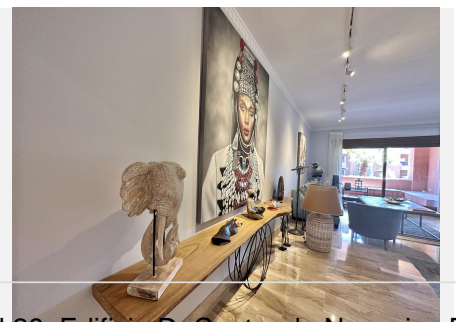
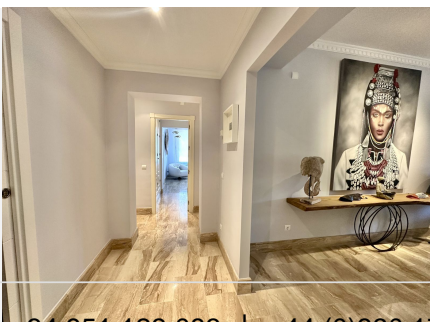
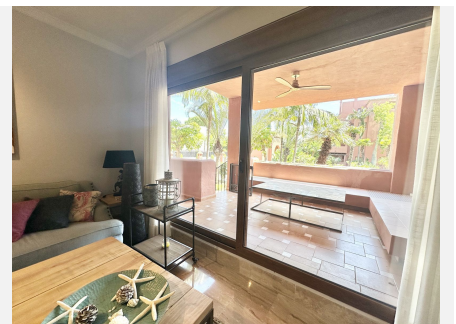
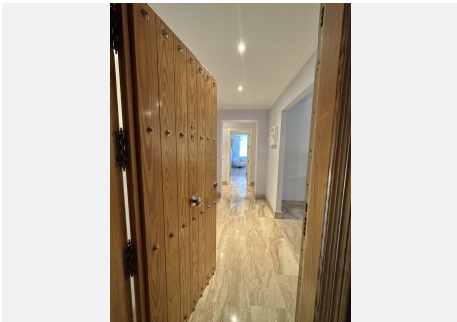
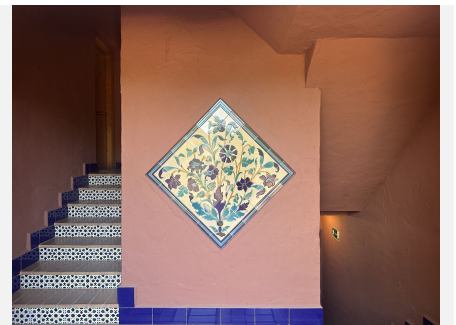
LUXURY APARTMENT ALHAMBRA GOLF - WALKING DISTANCE TO THE BEACH & GOLF Luxurious living awaits in our stunning apartment nestled within the esteemed urbanization in Guadalmina Baja, in Estepona's premier places. Surrounded by lush, prize-winning gardens, this home offers not only beauty but also security with 24-hour surveillance and a daytime concierge. It's a beautiful holiday home in the prestigious neighborhood. Enjoy the array of amenities, a charming playground, and a sprawling swimming pool accessible to both children and adults. For outdoor gatherings, indulge in the barbecue area nestled under a gazebo by the poolside. With just a short stroll to the beach & golf course, convenience meets luxury as all necessities are within reach, while Puerto Banus is merely a 5-minute drive away and Marbella only 10. External paddle court next to the complex. This ground-floor residence boasts three bedrooms and three baths (two en-suite), featuring underfloor heating and a southern orientation. Recently refurbished, it offers nearly 40 square meters of almost wrap-around terrace space, ideal for soaking up the Mediterranean ambiance. Additionally, the property includes two parking spaces in the underground garage for added convenience. Plus, a separate one-bedroom, one-bath apartment in the basement adjacent to the garage is perfect for accommodating staff, equipped with electric blinds for added comfort and privacy. A VIEWING IS HIGHLY RECOMMENDED! Ground Floor Apartment, Estepona, Costa del Sol. 3 Bedrooms, 3 Bathrooms,

+34 951 123 083 | +44 (0)330 179 8687 | info@idiliqestates.com Local 28, Edificio D, Centro de Negocios Puerta de Banús, N-340, Km 175, 29660 Nueva Andlucia

IDILIQ

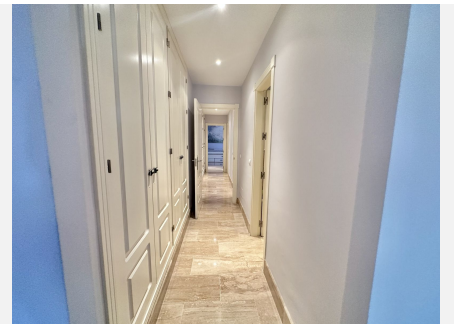
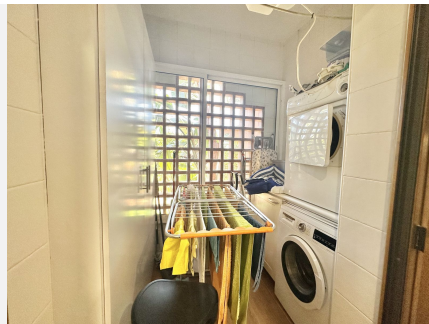
ESTATES

Built 164 m², Terrace 40 m². Setting : Beachside, Close To Shops, Close To Sea, Close To Town, Close To Schools, Urbanisation. Orientation : South. Condition : Excellent, Recently Refurbished. Pool : Communal, Children`s Pool. Climate Control : Air Conditioning, Hot A/C, Cold A/C, Fireplace, U/F Heating, U/F/H Bathrooms. Views : Garden, Pool. Features : Covered Terrace, Fitted Wardrobes, Near Transport, Private Terrace, Storage Room, Utility Room, Ensuite Bathroom, Marble Flooring, 24 Hour Reception, Staff Accommodation, Basement. Furniture : Fully Furnished. Kitchen : Fully Fitted. Garden : Communal. Security : Gated Complex, 24 Hour Security. Parking : Underground, Garage, More Than One, Private. Utilities : Electricity, Drinkable Water. Category : Holiday Homes, Luxury, Resale.



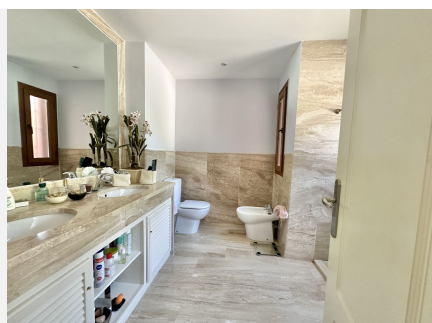
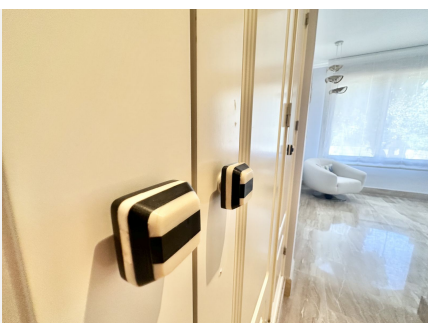
IDILIQ

ESTATES



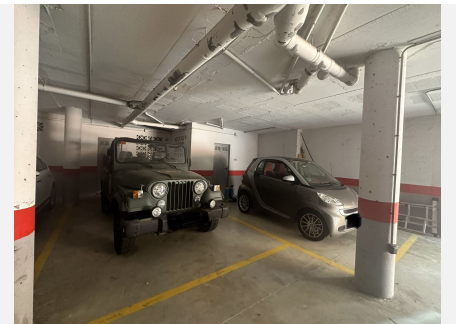
IDILIQ

ESTATES



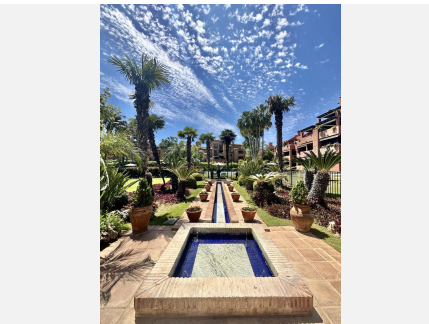
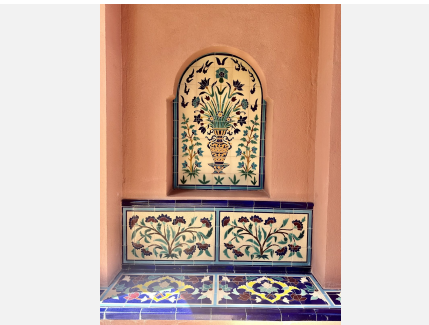
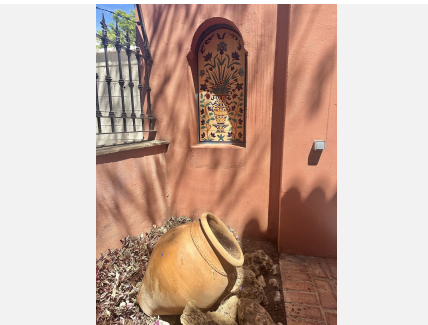
IDILIQ

ESTATES



IDILIQ

ESTATES



IDILIQ

ESTATES

