



R4723723

 Benalmadena Pueblo

REF# R4723723 340.000 €

BEDS

2

BATHS

2

BUILT

110 m²

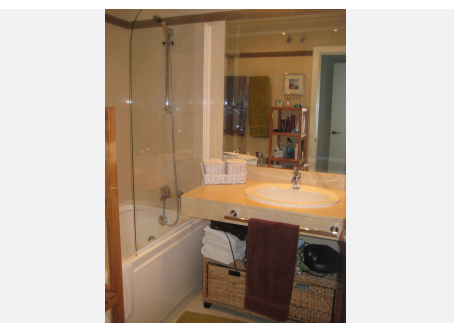
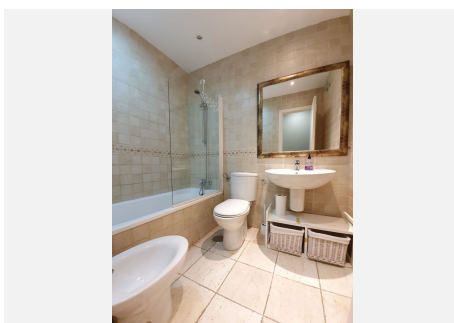
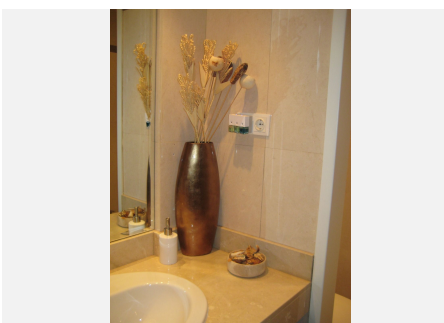
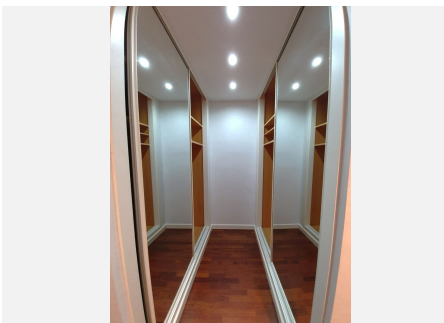
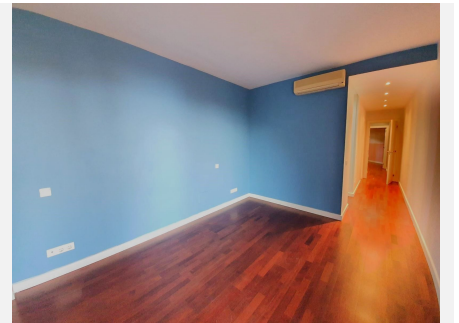
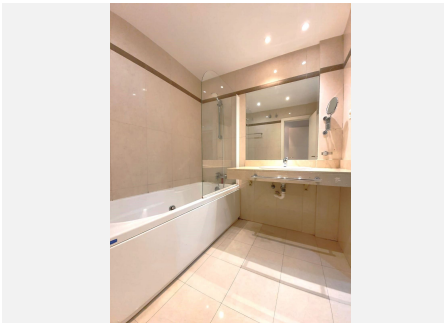
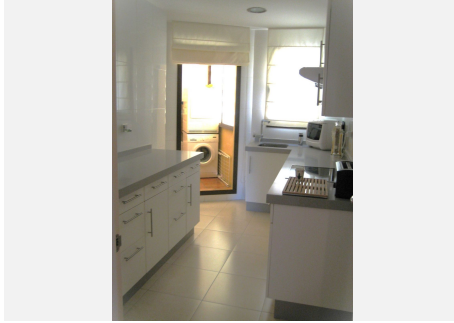
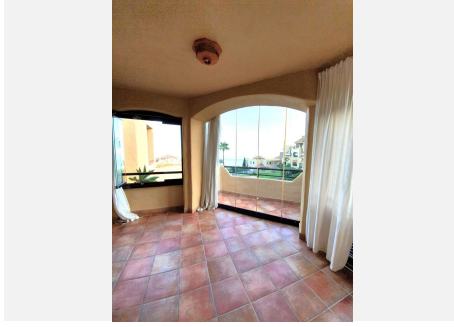
TERRACE

15 m²

PENTHOUSE FOR SALE IN BENALMÁDENA PUEBLO!! Beautiful, peaceful urbanization with communal gardens and swimming pool, meticulously maintained and quiet, ideal for year-round living. Located on the 2nd and top floor, it offers a perfect blend of beauty and tranquility with panoramic sea views , over the pool and open views . Spacious and roomy, it features two generous bedrooms with built-in wardrobes and an elegant dressing room in the master bedroom, along with two full bathrooms, one of which is en suite. The kitchen has been recently renovated with Silestone countertops, while wooden flooring and smooth walls add a touch of warmth and elegance. In excellent condition, it is equipped with air conditioning and heating. The expansive terrace, enclosed with Lumon glass, is ideal for enjoying every season of the year! Enjoy the breathtaking sea views and communal areas from the spacious terrace, which is enclosed with glass curtains, perfect for enjoying winter without losing sight of the beauty of the surroundings. Additionally, this property includes a parking space just steps from the main entrance, as well as a storage room for added convenience.

IDILIQ

ESTATES



IDILIQ

ESTATES

