



R5393608

 The Golden Mile

REF# R5393608 1.395.000 €

BEDS

3

BATHS

3

BUILT

182 m²

TERRACE

126 m²

Nestled in the heart of the prestigious Marbella Golden Mile, this luxurious duplex penthouse offers an unparalleled living experience. Boasting three spacious bedrooms and three well-appointed bathrooms, this property epitomises elegance and sophistication. With a generous built area of 308m² and an expansive terrace of 126m², it provides ample space for both relaxation and entertainment.

Upon entering the property, one is greeted by an open-plan kitchen that seamlessly integrates with the living and dining areas, creating a harmonious flow throughout the entrance level. The kitchen is fully fitted and equipped to the highest standards, ensuring a delightful culinary experience. The master bedroom, along with another bedroom featuring an en-suite bathroom, is located on this level, offering comfort and privacy. The apartment is fully furnished, with marble floors adding a touch of opulence to the interior.

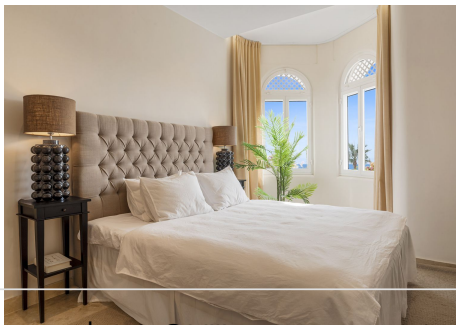
The upper level houses an additional bedroom and bathroom, alongside a convenient laundry room. This level opens up to a magnificent private terrace, where a private pool and barbecue area await, perfect for hosting gatherings or enjoying tranquil sunbathing sessions. The terrace offers breathtaking panoramic

IDILIQ

ESTATES

views of the sea and mountains, providing a serene backdrop to everyday life.

This property is classified as a luxury sole agency offering and has been recently renovated to the finest Scandinavian standards. It features air conditioning, fitted wardrobes, and a storage room, ensuring all modern conveniences are met. Additionally, residents benefit from a 24-hour security service, a communal garden, and a garage. With its excellent condition and below market value, this penthouse also offers a rent-to-buy option, making it an enticing opportunity for discerning buyers. For further information, please do not hesitate to get in touch.



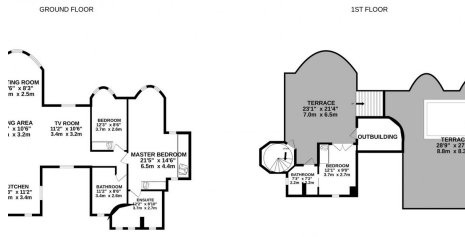
IDILIQ

ESTATES



IDILIQ

ESTATES



TOTAL FLOOR AREA: 1967sq. (5287 sq. ft.) approx.
 These floor plans are provided as a guide only and do not constitute an offer of any real estate. The actual floor plans may vary from those shown. The actual floor plans may vary from those shown. The actual floor plans may vary from those shown.