



R4721806

📍 El Paraiso

REF# R4721806 2.050.000 €

BEDS

4

BATHS

6

BUILT

447 m²

PLOT

1000 m²

TERRACE

150 m²

REALLY ATTRACTIVE VILLA IN EXCELLENT CONDITION WITH A STUNNING GARDEN AND MAGNIFICENTLY LOCATED, just 2 Kms from San Pedro de Alcántara and 6 Kms from Puerto Banús. Restaurants, shops and leisure areas in only 10 minutes walking distance. The beach and Golf Courses at 5 min. drive, Estepona at 15 min. and Marbella at 10 min. Enjoy complete tranquillity and total privacy. South facing with great luminosity and relaxing views over its mature garden and swimming pool, all excellently maintained with a parking area for several cars. Built with top quality materials and decorated with exquisite taste, this property is distributed over 3 levels, with spacious rooms. On the ground floor we find the kitchen open to the dining room and living room with high ceilings and direct access to the spectacular porch, garden and swimming pool. Also with a comfortable access from the living room and the kitchen there is another large "breakfast terrace" on the side of the house with barbecue area, pergola and a fountain with the pleasant sound of water. The very spacious master bedroom en-suite as all the bedrooms in this property with luxurious built-in wardrobes is also located on this comfortable ground floor with direct access to the garden, as well as a second bedroom en-suite and the guest toilet. The upper floor consists of 2 en-suite bedrooms with high ceilings and relaxing views of the garden and surroundings. In the basement, with access from inside and outside the property there is an additional kitchen, a bathroom and two large

+34 951 123 083 | +44 (0)330 179 8687 | info@idiliqestates.com Local 28, Edificio D, Centro de Negocios Puerta de Banús, N-340, Km 175, 29660 Nueva Andlucia

IDILIQ

ESTATES

spaces, which give endless possibilities, such as a wine cellar, gym, office or even a cinema. We highly recommend viewing this fantastic property. The upper floor has two en-suite bedrooms with high ceilings and relaxing views of the garden and surrounding area. In the basement, accessible from both inside and outside the property, there is an additional kitchen, bathroom and two large spaces that offer endless possibilities, such as a wine cellar, gym, office or even a cinema room. We highly recommend a visit to this fantastic property.



IDILIQ

ESTATES



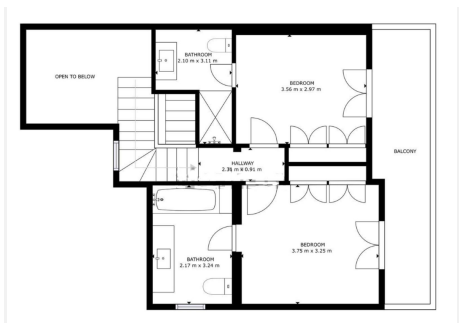
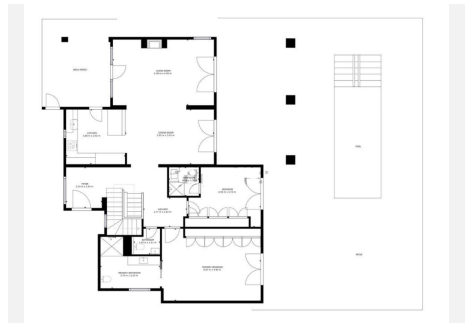
IDILIQ

ESTATES



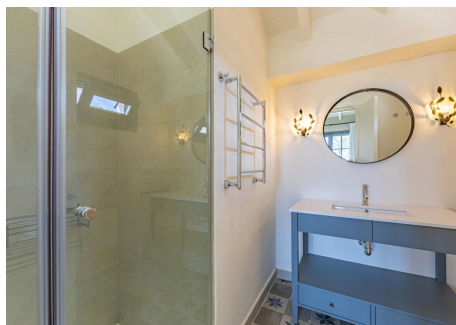
IDILIQ

ESTATES



IDILIQ

ESTATES



IDILIQ

ESTATES

